

18.06.2020

## Consumer tendency – June 2020

**10.7 p. p.**  
Change in current consumer confidence indicator

In June 2020, there was an improvement in both current and future consumer sentiment moods compared to the previous month. The current consumer confidence indicator, synthetically describing the current trends in individual consumption, was **-19.4<sup>a</sup>** which was by **10.7 p.p.** higher in relation to last month.

### Current consumer confidence indicator in June 2020

All components of the indicator obtained values higher than a month ago. The largest increases were recorded in evaluations of the future economic situation of the country (by 18.8 percentage points) and of the current possibility of making important purchases (by 16.7 percentage points). For the other components of the indicator, the increases were as follows: by 10.7 percentage points in the evaluation of the future financial situation of a household, by 4.8 percentage points in the evaluation of the current economic situation of the country and by 2.7 percentage points in the evaluation of the current financial situation of a household.

Referring to June 2019, the current value of current consumer confidence indicator is lower by 29.0 percentage points.

### Leading consumer confidence indicator in June 2020

The leading consumer confidence indicator, synthetically describing trends in individual consumption that are expected in the coming months, increased by 13.4 percentage points in relation to the previous month, and was at the level of **-23.9<sup>a</sup>**.

The increase of the value of the indicator was affected by all of its components. The largest increase was recorded in evaluation of future economic situation of the country (by 18.8 percentage points). For the other components of the indicator, the increases were as follows: by 17.4 percentage points in the evaluation of future level of unemployment, by 10.7 percentage points in the evaluations of the future financial situation of a household and by 6.8 percentage points in the evaluation of the possibility of future money saving.

In June this year leading consumer confidence indicator reached a value lower by 31.4 percentage points than in the corresponding month of 2019.

**For 88.9% of respondents, the current epidemiological situation had an impact on responses regarding the consumer tendency (answers to additional questions in connection with the threat coronavirus COVID-19 are presented in the annex).**

Current consumer confidence indicator is higher by 10.7 percentage points compared to the previous month

Leading consumer confidence indicator increased by 13.4 percentage points compared to the previous month

For 88.9% of respondents, the current epidemiological situation had an impact on the answers to questions about the consumer tendency

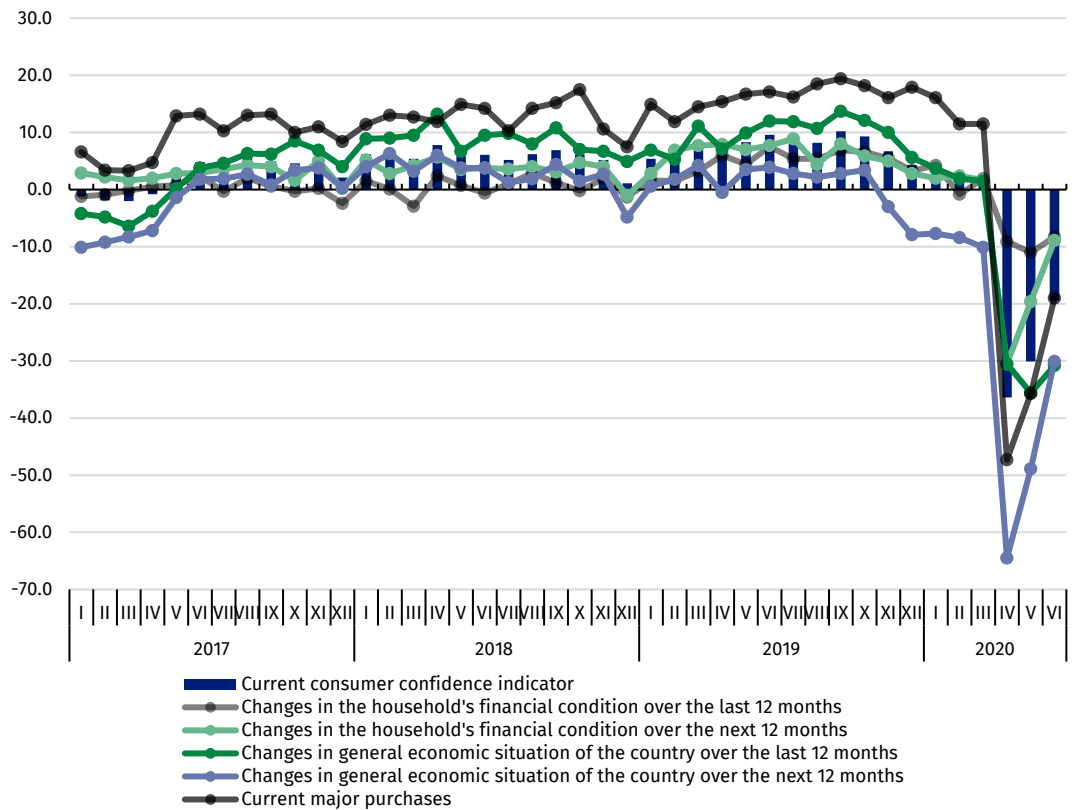
<sup>a</sup> Both consumer confidence indicators receive values between -100 and +100. A positive value means dominance of consumers with optimistic attitude over consumers with pessimistic attitude, while negative value means dominance of consumers with pessimistic attitude over consumers with optimistic attitude. In the period of 01-10.06.2020, 1340 interviewees were conducted using the telephone interview method.

**Table 1. Current consumer confidence indicator**

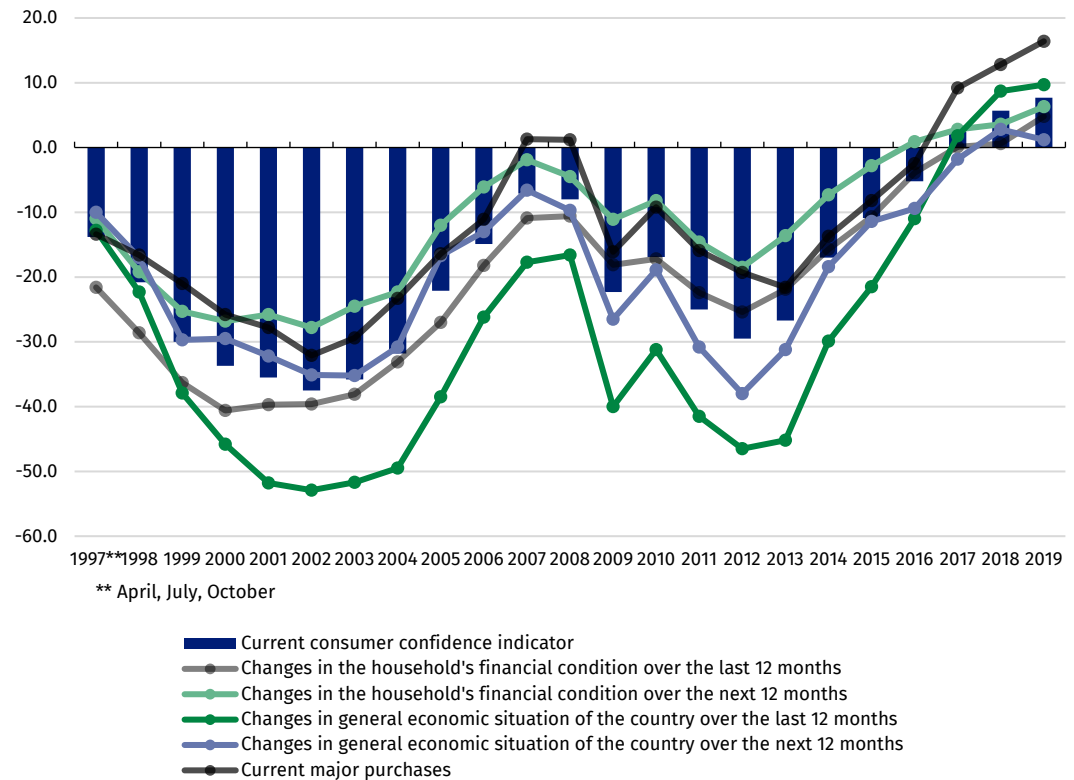
Survey period		Changes in the household's financial condition:		Changes in general economic situation of the country :		Current major purchases	Current consumer confidence indicator
Year	Quarter Month	over the last 12 months	over the next 12 months	over the last 12 months	over the next 12 months		
		a	b	c	d	e	
balance of evaluations in percent							
<b>Years</b>							
2007		-10.9	-1.9	-17.7	-6.6	1.3	-7.1
2008		-10.6	-4.5	-16.6	-9.7	1.2	-8.0
2009		-18.1	-11.1	-40.0	-26.5	-16.1	-22.3
2010		-17.2	-8.2	-31.2	-18.9	-9.2	-16.9
2011		-22.4	-14.6	-41.5	-30.8	-15.9	-25.0
2012		-25.4	-18.5	-46.5	-38.0	-19.3	-29.5
2013		-21.9	-13.6	-45.2	-31.2	-21.6	-26.7
2014		-15.7	-7.3	-29.9	-18.4	-13.7	-17.0
2015		-10.7	-2.8	-21.5	-11.4	-8.2	-10.9
2016		-3.9	0.9	-11.0	-9.4	-2.5	-5.2
2017		0.1	2.8	1.8	-1.8	9.2	2.4
2018		0.6	3.6	8.7	2.8	12.8	5.7
2019		4.8	6.3	9.7	1.2	16.4	7.7
<b>Quarters</b>							
2019	I	2.1	5.8	7.8	2.2	13.8	6.3
	II	6.0	7.5	9.6	2.3	16.4	8.4
	III	5.9	7.1	12.1	2.6	18.0	9.1
	IV	5.1	4.6	9.3	-2.5	17.4	6.8
2020	I	1.8	2.0	2.4	-8.7	13.1	2.1
	II	-9.5	-19.7	-32.3	-47.8	-34.0	-28.7
<b>Months</b>							
2019	01	1.6	2.8	6.9	0.6	14.9	5.4
	02	1.5	6.9	5.3	1.8	11.9	5.5
	03	3.2	7.7	11.1	4.2	14.5	8.2
	04	6.0	7.9	7.1	-0.5	15.4	7.2
	05	4.4	7.0	9.9	3.5	16.7	8.3
	06	7.5	7.7	12.0	3.9	17.1	9.6
	07	5.4	8.9	11.9	2.8	16.2	9.0
	08	5.4	4.4	10.7	2.2	18.5	8.2
	09	6.9	8.0	13.7	2.8	19.4	10.2
	10	6.6	5.9	12.1	3.4	18.2	9.3
	11	5.5	5.0	10.0	-3.0	16.1	6.7
	12	3.3	2.8	5.6	-7.9	17.9	4.3
2020	01	4.2	2.0	3.7	-7.7	16.1	3.7
	02	-0.8	2.4	1.9	-8.4	11.5	1.3
	03	1.9	1.7	1.5	-10.1	11.5	1.3
	04	-9.1	-30.5	-30.5	-64.5	-47.3	-36.4
	05	-11.0	-19.6	-35.6	-48.9	-35.7	-30.1
	06	-8.3	-8.9	-30.8	-30.1	-19.0	-19.4

Current consumer confidence indicator is the average of balances of evaluations changes in the household's financial condition, changes in general economic situation of the country and currently made major purchases

**Chart 1. Current consumer confidence indicator and its component values by month in 2017–2020**



**Chart 2. Current consumer confidence indicator and its component values by years**



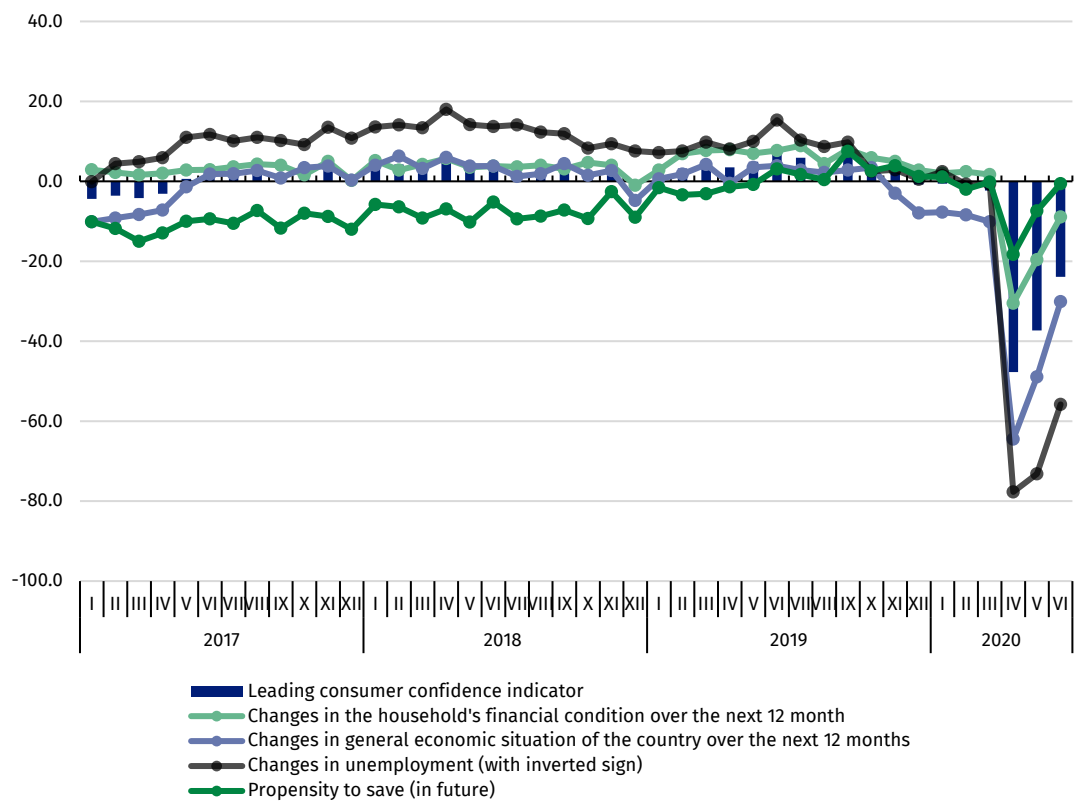
\*\* April, July, October

**Table 2. Leading consumer confidence indicator**

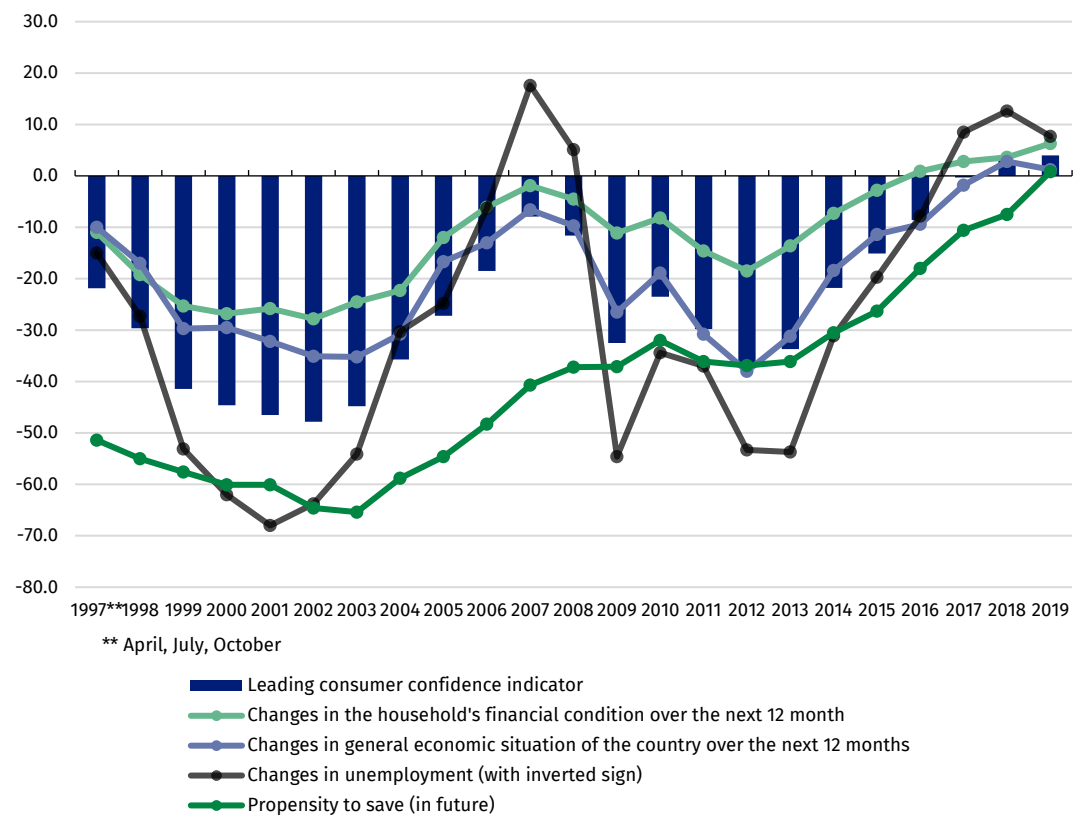
Survey period		Changes in the household's financial condition	Changes in general economic situation of the country	Changes in unemployment (with inverted sign)	Propensity to save (in future)	Leading consumer confidence indicator
Year	Quarter Month	b	d	f	g	
balance of evaluations in percent						
<b>Years</b>						
2006		-6.1	-13.0	-6.3	-48.3	-18.5
2007		-1.9	-6.6	17.6	-40.7	-7.9
2008		-4.5	-9.7	5.1	-37.2	-11.6
2009		-11.1	-26.5	-54.6	-37.1	-32.5
2010		-8.2	-18.9	-34.4	-32.0	-23.5
2011		-14.6	-30.8	-37.0	-36.1	-29.8
2012		-18.5	-38.0	-53.3	-36.9	-36.7
2013		-13.6	-31.2	-53.7	-36.1	-33.7
2014		-7.3	-18.4	-31.1	-30.5	-21.8
2015		-2.8	-11.4	-19.7	-26.3	-15.1
2016		0.9	-9.4	-7.8	-18.0	-8.6
2017		2.8	-1.8	8.5	-10.6	-0.3
2018		3.6	2.8	12.6	-7.5	2.9
2019		6.3	1.2	7.7	0.8	4.0
<b>Quarters</b>						
2019	I	5.8	2.2	8.2	-2.7	3.4
	II	7.5	2.3	11.1	0.3	5.3
	III	7.1	2.6	9.6	3.2	5.6
	IV	4.6	-2.5	2.0	2.5	1.7
2020	I	2.0	-8.7	0.3	-0.4	-1.7
	II	-19.7	-47.8	-68.9	-8.8	-36.3
<b>Months</b>						
2019	01	2.8	0.6	7.2	-1.6	2.2
	02	6.9	1.8	7.6	-3.4	3.2
	03	7.7	4.2	9.8	-3.1	4.7
	04	7.9	-0.5	8.1	-1.4	3.5
	05	7.0	3.5	10.0	-0.8	4.9
	06	7.7	3.9	15.3	3.1	7.5
	07	8.9	2.8	10.3	1.7	5.9
	08	4.4	2.2	8.7	0.4	3.9
	09	8.0	2.8	9.8	7.5	7.0
	10	5.9	3.4	2.5	2.6	3.6
	11	5.0	-3.0	2.9	3.9	2.2
	12	2.8	-7.9	0.5	1.2	-0.8
2020	01	2.0	-7.7	2.4	1.1	-0.6
	02	2.4	-8.4	-0.7	-2.0	-2.2
	03	1.7	-10.1	-0.7	-0.2	-2.3
	04	-30.5	-64.5	-77.7	-18.3	-47.7
	05	-19.6	-48.9	-73.2	-7.4	-37.3
	06	-8.9	-30.1	-55.8	-0.6	-23.9

Leading consumer confidence indicator is the average of balances of evaluations changes in the household's financial condition, general economic situation of the country, trends in the level of unemployment (with inverted sign) and saving money in the next 12 months

**Chart 3. Leading consumer confidence indicator and its component values by month in 2017–2020**



**Chart 4. Leading consumer confidence indicator and its component values by years**



# Annex

## Additional questions in relation to the epidemiological situation (threat of COVID-19 coronavirus)

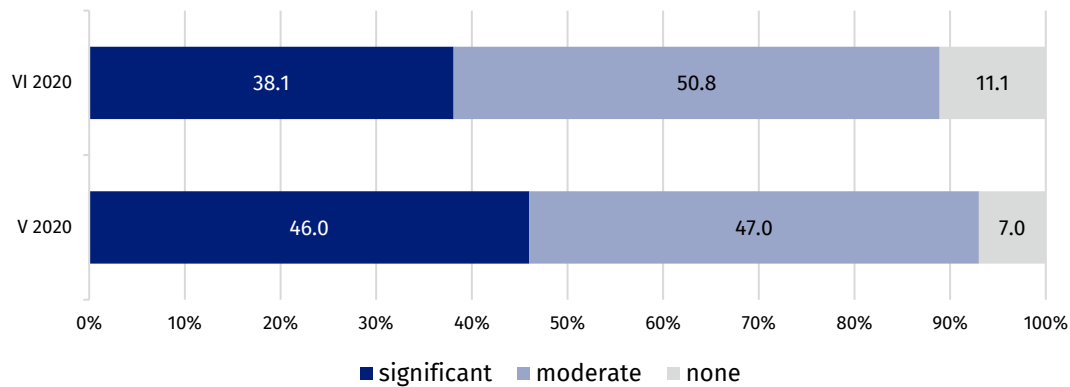
**↓ 88.9%**  
respondents declared the impact of the epidemiological situation on responses regarding the consumer tendency (in May it was 93.0%)

In June 2020, for 61.0% of respondents, the current epidemiological situation poses a big threat to the economy in Poland (a decrease of 17.2 percentage points compared to the previous month).

### Impact of the current epidemiological situation on responses to the consumer tendency

From among respondents declaring the impact of the epidemiological situation on responses regarding the consumer tendency, 50.8% described it as moderate and 38.1% as significant. For 11.1% of respondents, the current situation had no impact on the answers.

**Chart 1. Impact of current epidemiological situation (COVID-19 coronavirus) on responses - response structure (%)**



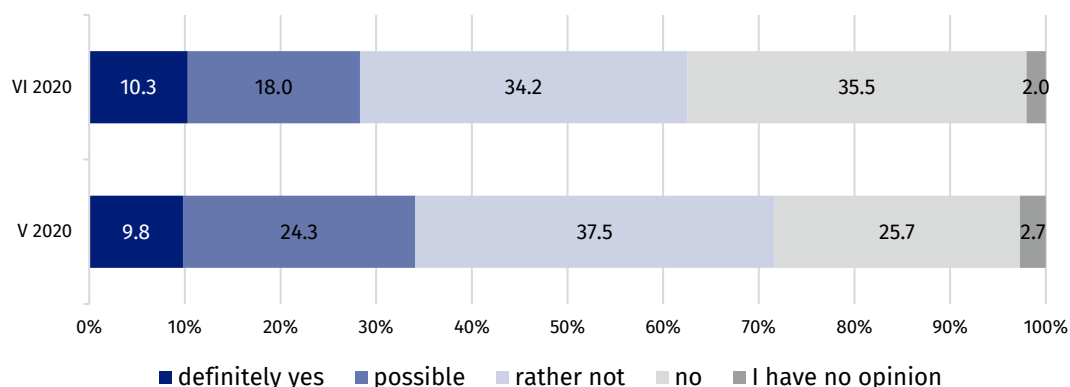
38.1% of respondents declared a significant impact of the epidemiological situation on responses regarding the consumer tendency

### Fear of losing a job or stopping running your own business due to the current epidemiological situation

Among the employed (59.1% of respondents), 10.3% of respondents have a definite fear of losing their job or stopping their own business. For the "possible" and "rather not" options, the response rate was 18.0% and 34.2%, respectively. The percentage of working people who do not have any concerns is 35.5%. A small number of working respondents (2.0%) had no opinion.

10.3% of respondents expressed a definite fear of losing their job or stopping their own business

**Chart 2. Fear of losing your job or stopping your own business due to the current epidemiological situation (COVID-19 coronavirus) - structure of responses for employees (%)**

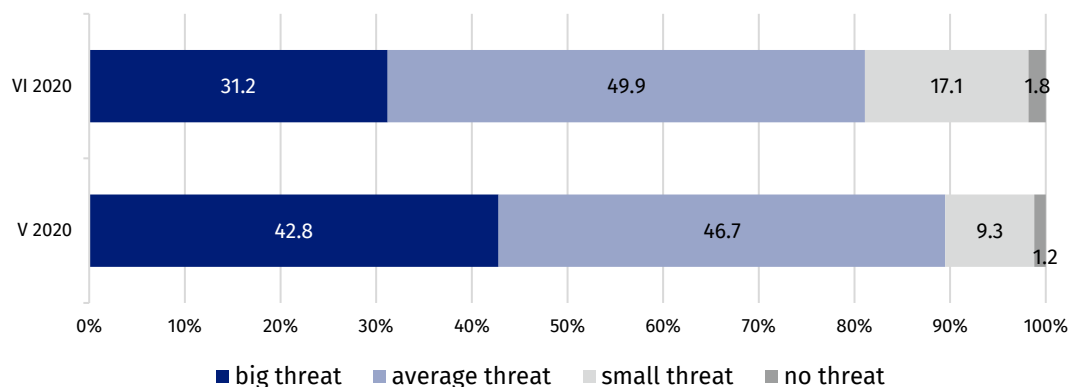


**What threat is the current epidemiological situation for the health of the population of Poland as a whole**

For 31.2% of respondents, the current epidemiological situation poses a big threat to the health of the population as a whole. The average threat is felt by 49.9% of respondents. A small threat is declared by 17.1%, while only 1.8% of respondents said there was no threat.

According to 31.2% of respondents, the current epidemiological situation poses a big threat to the health of the population as a whole

**Chart 3. What is the threat of the current epidemiological situation (COVID-19 coronavirus) for the health of the population of Poland as a whole - response structure (%)**

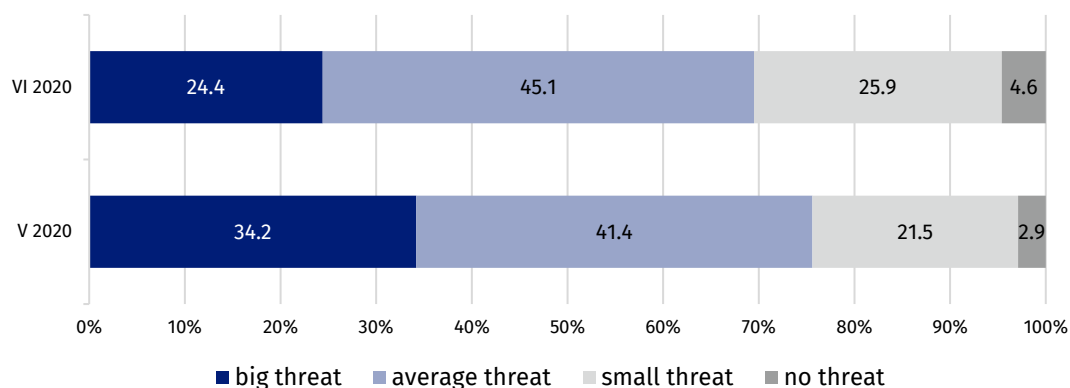


For 24.4% of respondents, the current epidemiological situation is a big threat to their personal health

**What threat is the current epidemiological situation for personal health**

For 24.4% of respondents, the current epidemiological situation is a big threat to their personal health. 45.1% of respondents feel an average threat. 25.9% declare a small threat, while 4.6% of respondents said no threat.

**Chart 4. What is the threat of the current epidemiological situation (COVID-19 coronavirus) for personal health - response structure (%)**

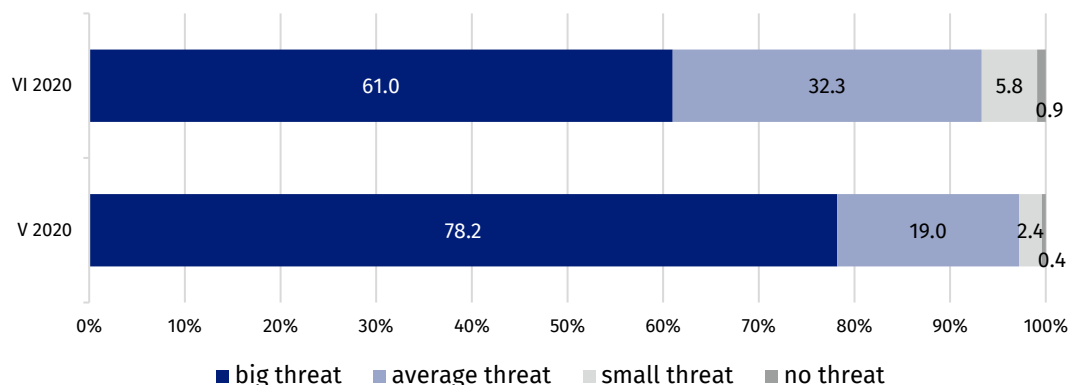


**What threat is the current epidemiological situation for the economy in Poland**

According to 61.0% of respondents, the current epidemiological situation is a big threat to the economy in Poland. The average threat to the economy is felt by 32.3% of respondents. Only 5.8% declare a small threat, while barely 0.9% of respondents declare no threat.

For 61.0% of respondents, the current epidemiological situation is a big threat to the economy in Poland

**Chart 5. What is the threat of the current epidemiological situation (COVID-19 coronavirus) for the economy in Poland - response structure (%)**



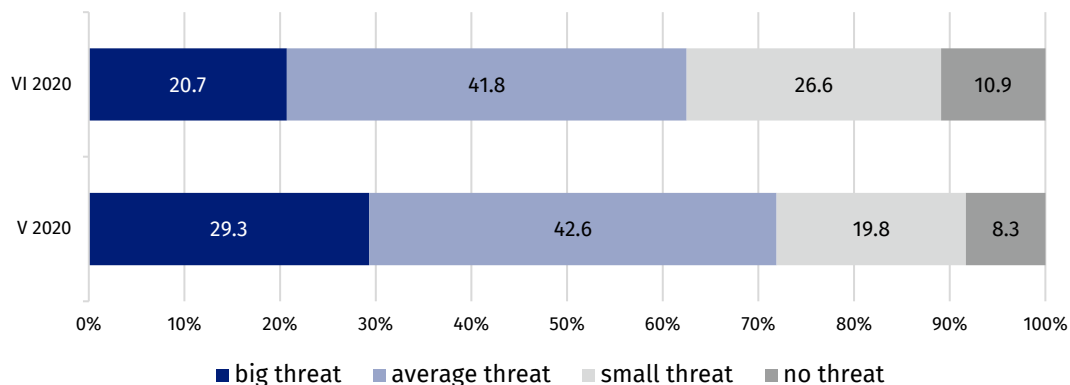
**What threat is the current epidemiological situation for personal financial situation**

For 20.7% of respondents, the current epidemiological situation is a big threat to their personal financial situation. The average threat is felt by 41.8% of respondents to questions about the consumer tendency. A small threat is declared by 26.6%, while no threat was stated by 10.9% of respondents.

For 20.7% of respondents, the current epidemiological situation is a big threat to their personal financial situation



**Chart 6. What is the threat of the current epidemiological situation (COVID-19 coronavirus) for your personal financial situation - structure of responses (%)**

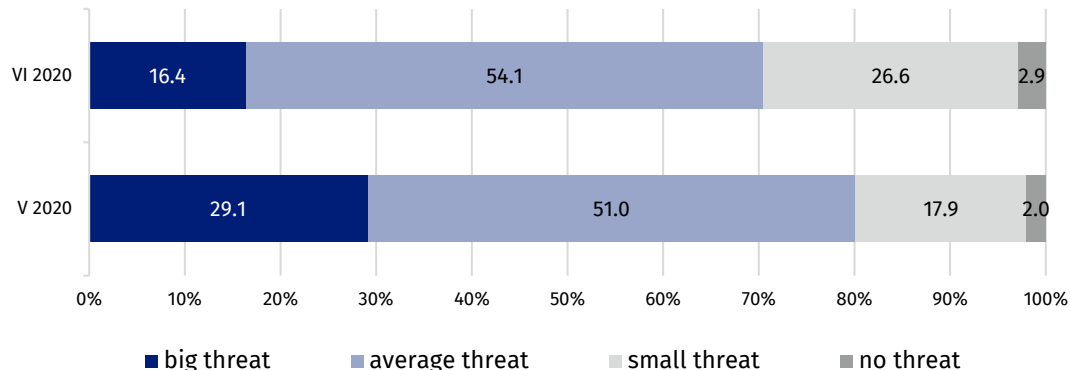


**What threat is the current epidemiological situation for everyday life in the local community**

For 16.4% of respondents, the current epidemiological situation is a big threat to everyday life in the local community. The average threat is felt by 54.1% of responding to questions about the consumer tendency. 26.6% declare a small threat, while only 2.9% of respondents declare no threat.

For 16.4% of respondents, the current epidemiological situation is a big threat to everyday life in the local community

**Chart 7. What is the threat of the current epidemiological situation (COVID-19 coronavirus) for everyday life in your local community - response structure (%)**



**Table 1. Additional questions (response rates) - epidemiological situation (COVID-19 coronavirus threat)**

SPECIFICATION		April	May	June
<b>What impact did the current epidemiological situation have on your responses (COVID-19 coronavirus)?</b>	significant	58.1	46.0	38.1
	moderate	37.3	47.0	50.8
	none	4.6	7.0	11.1
<b>In connection with the current epidemiological situation (COVID-19 coronavirus), are you afraid of losing your job or stopping your own business?</b>	definitely yes	11.1	5.7	6.1
	possible	16.9	14.2	10.6
	rather not	16.3	21.9	20.2
	no	11.6	15.0	21.0
	I have no opinion	2.4	1.6	1.2
	not applicable (for non-working people)	41.7	41.7	40.9
<b>What threat do you think is the current epidemiological situation (COVID-19 coronavirus) for the health of the population of Poland as a whole?</b>	big threat	69.8	42.8	31.2
	average threat	27.0	46.7	49.9
	small threat	3.0	9.3	17.1
	no threat	0.2	1.2	1.8
<b>What threat do you think is the current epidemiological situation (COVID-19 coronavirus) for your personal health?</b>	big threat	50.7	34.2	24.4
	average threat	38.7	41.4	45.1
	small threat	10.0	21.5	25.9
	no threat	0.6	2.9	4.6
<b>What threat do you think is the current epidemiological situation (COVID-19 coronavirus) for the economy in Poland?</b>	big threat	88.0	78.2	61.0
	average threat	11.0	19.0	32.3
	small threat	0.9	2.4	5.8
	no threat	0.1	0.4	0.9
<b>What threat do you think is the current epidemiological situation (COVID-19 coronavirus) for your personal financial situation?</b>	big threat	44.4	29.3	20.7
	average threat	36.5	42.6	41.8
	small threat	14.6	19.8	26.6
	no threat	4.5	8.3	10.9
<b>What threat do you think is the current epidemiological situation (COVID-19 coronavirus) for everyday life in your local community?</b>	big threat	49.5	29.1	16.4
	average threat	43.1	51.0	54.1
	small threat	7.3	17.9	26.6
	no threat	0.1	2.0	2.9

In case of quoting Statistics Poland data, please provide information: "Source of data: Statistics Poland", and in case of publishing calculations made on data published by Statistics Poland, please include the following disclaimer: "Own study based on figures from Statistics Poland".

Prepared by:

**Statistical Office in Łódź**  
**Director Piotr Ryszard Cmela, Ph.D.**

Office: tel. (+48 42) 684 56 11

Issued by:

**The Spokesperson for the President**  
**of Statistics Poland**

**Karolina Banaszek**

Mobile: (+48) 695 255 011

#### **Press Office**

Office: tel. (+48 22) 608 34 91, 608 38 04

**e-mail: [obslugaprasowa@stat.gov.pl](mailto:obslugaprasowa@stat.gov.pl)**



[www.stat.gov.pl/en/](http://www.stat.gov.pl/en/)



[@StatPoland](https://twitter.com/StatPoland)



[@GlownyUrzadStatystyczny](https://www.facebook.com/GlownyUrzadStatystyczny)

#### **Related information**

[Business tendency in manufacturing, construction, trade and services - May 2020](#)

[Statistical Bulletin No 4/2020](#)

#### **Data available in databases**

[Knowledge Database Living Conditions](#)