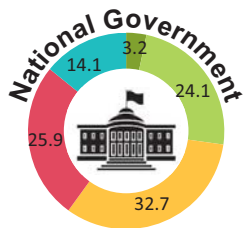
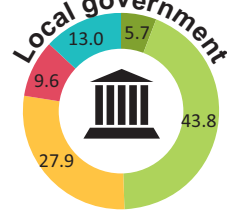
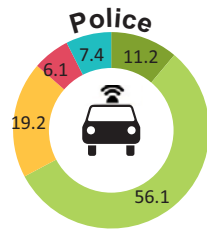
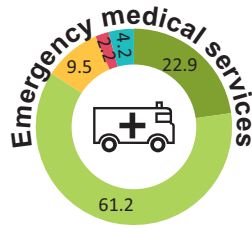
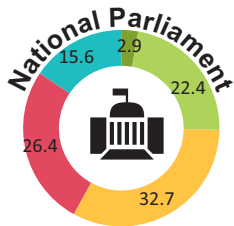
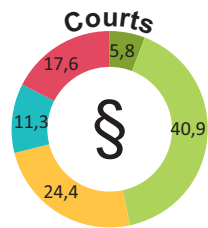
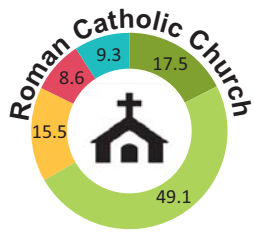
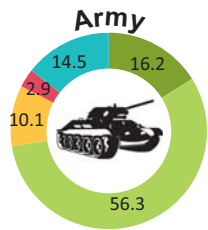


TRUST IN PUBLIC INSTITUTIONS

% OF PERSONS AGED 16 OR OVER

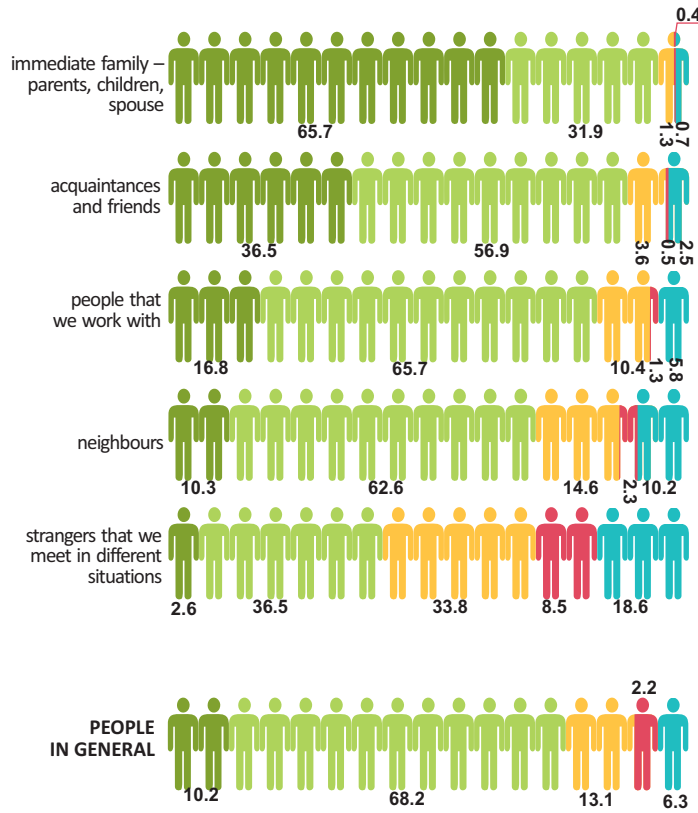


People who:

- definitely trust
- rather trust
- rather do not trust
- definitely do not trust
- hard to say

TRUST IN PEOPLE

% OF PERSONS AGED 16 OR OVER



People who:

- definitely trust
- rather trust
- rather do not trust
- definitely do not trust
- hard to say

Preparation:

Social Surveys and Living Conditions Department, CSO of Poland,
Statistical Office in Łódź.



CENTRAL STATISTICAL OFFICE OF POLAND

www.stat.gov.pl

VALUES AND SOCIAL TRUST IN POLAND

ON THE BASIS OF THE SOCIAL COHESION SURVEY 2015



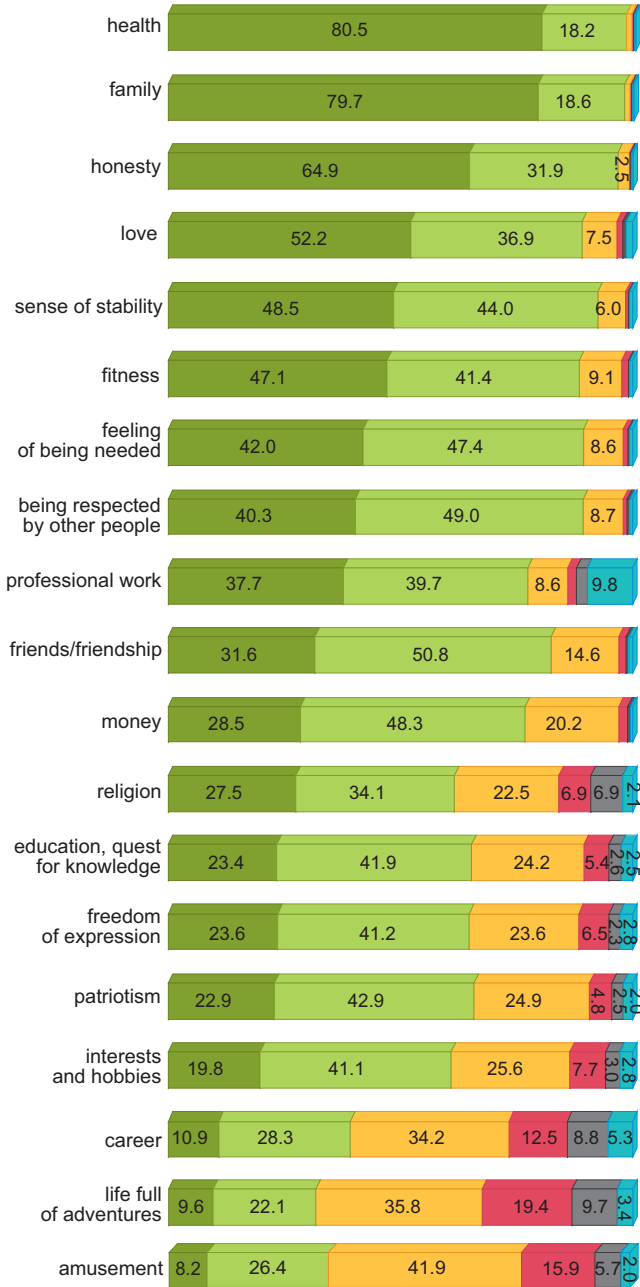
Do people in Poland trust each other? Do they trust in public institutions? Which values are the most important in their lives? To what extent they accept behaviours considered as reprehensible? Answers to these and many other questions concerning quality of life and social situation can be found thanks to the introduction of multidimensional Social Cohesion Survey to the Polish system of social statistics.

The unique character of this survey is based on the fact that it integrates all of the most important, objective and subjective aspects of the quality of life at the level of individual data. A cyclic character of the survey allows to monitor the social situation in Poland and enables the assessment of activities undertaken to reduce poverty, to develop social integration and to strengthen both human and social capital.

Presented results are derived from the 2nd edition of the Social Cohesion Survey, conducted in the first half of 2015.

IMPORTANCE OF PARTICULAR LIFE VALUES

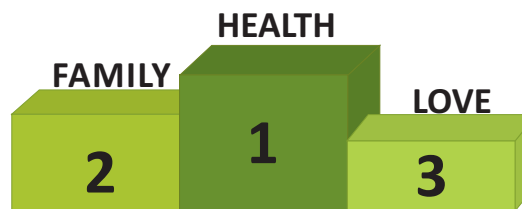
% OF PERSONS AGED 16 OR OVER



MOST IMPORTANT LIFE VALUES

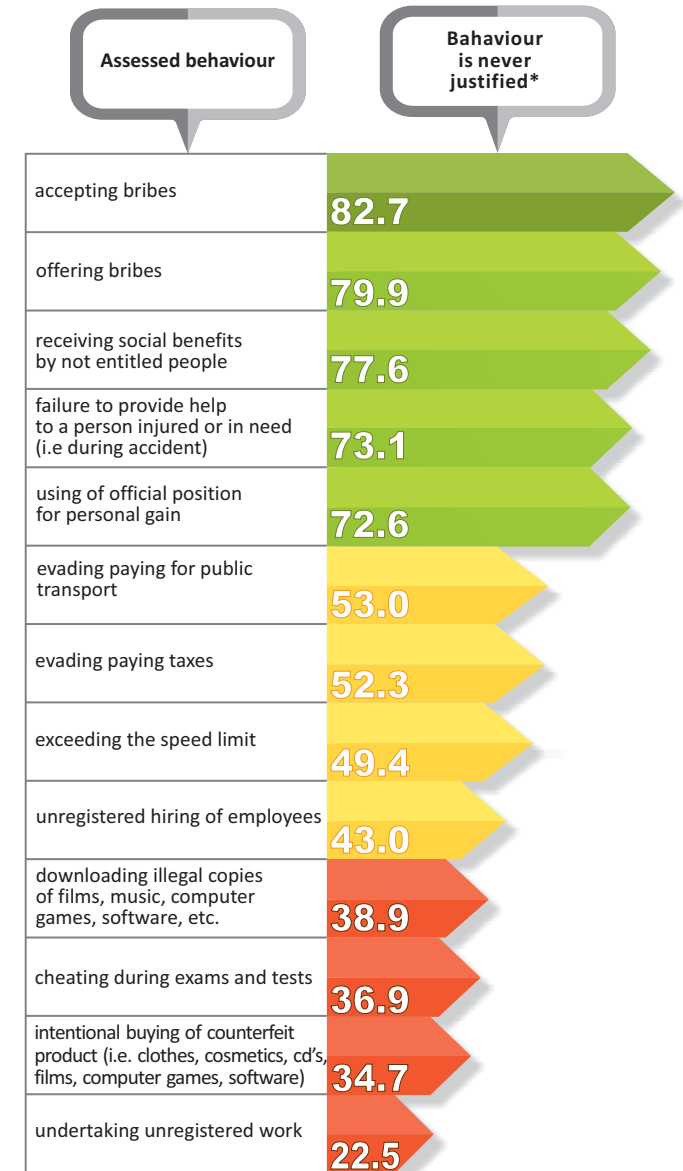
% OF PERSONS AGED 16 OR OVER

Values:	% of people who consider the value as the most important one	% of people who consider the value as one of the three most important ones
health	65.9	89.1
family	23.1	81.1
love	3.0	19.8
professional work	1.3	15.4
money	1.2	16.9
sense of stability	1.0	16.1
honesty	0.9	17.8
religion	0.9	8.9
education, quest for knowledge	0.4	2.6
fitness	0.3	6.4
friends/friendship	0.3	5.7
being respected by other people	0.3	5.6
patriotism, homeland's weal	0.3	2.1
freedom of expression	0.3	2.0
interests and hobbies	0.3	2.0
feeling of being needed	0.2	4.8
career	0.2	1.4
amusement	0.1	0.7
life full of adventures	0.0	0.8



ASSESSMENT OF DIFFERENT BEHAVIOURS

% OF PERSONS AGED 16 OR OVER



* % of persons who answered 'No, never' to the question: 'Do you think that the following behaviour can be justified?' (scale: No, never; Yes, in exceptional circumstances; Yes, sometimes; Yes, in most situations; Yes, always).