

Index numbers of construction and assembly production in June 2019^{a)}

23.07.2019


99.3

Index number of construction and assembly production as compared to June of 2018

In June of 2019 value of construction and assembly production in constant prices, in a monthly decreased and increasing basis increased, compared to corresponding periods of the previous year.

According to preliminary data, construction and assembly production (in constant prices) carried out domestically by construction enterprises employing more than 9 persons was in June of 2019 by 0.7% lower than a year before and by 9.3% higher compared with May this year (against an increases accordingly by 24.7% and 20.6% the year before). In the period January-June of 2019 construction and assembly production was by 6.6% higher in comparison to the same period of 2018, which saw an increase of 23.7%.

In comparison to May of 2019 was recorded the increase value of construction and assembly production

Table 1. Index numbers of construction and assembly production (constant prices)

SPECIFICATION	VI 2019		I-VI 2019 ¹
	IV 2019=100	V 2018=100	I-V 2018=100
CONSTRUCTION	109.3	99.3	106.6
Construction of buildings ^Δ	109.0	98.2	104.2
Civil engineering works ^Δ	113.5	100.0	107.5
Specialised construction activities	102.7	99.4	108.5

^Δ Abbreviated form according PKD 2007.

¹ Data including final information on production and prices in in May and reported data in June.

^{a)} Reported data; comprise enterprises employing over 9 persons, whose the main type of activity is included in the section F "Construction" in accordance with the Polish Classification of Activities (PKD 2007).

In comparison to June of 2018 an decreases value of construction and assembly production was recorded in entities dealing mainly with the construction of building (1.8%) and in entities performing specialised construction activities (0.6%). In entities whose basic type of activity were civil engineering value of construction and assembly production has not changed.

Compared with May of 2019 an increase of value works carried out was noted in all divisions of construction: in entities dealing mainly with civil engineering works - by 13.5%, in entities whose basic type of activity was the construction of building – by 9.0% and in entities performing specialised construction activities (2.7%).

In the period January-June of 2019 the highest increase value of construction and assembly production (8.5%) was recorded in entities performing specialised construction activities. Increases have noticed in entities whose basic type of activity were civil engineering works (7.5%) and performing specialised construction activities (4.2%).

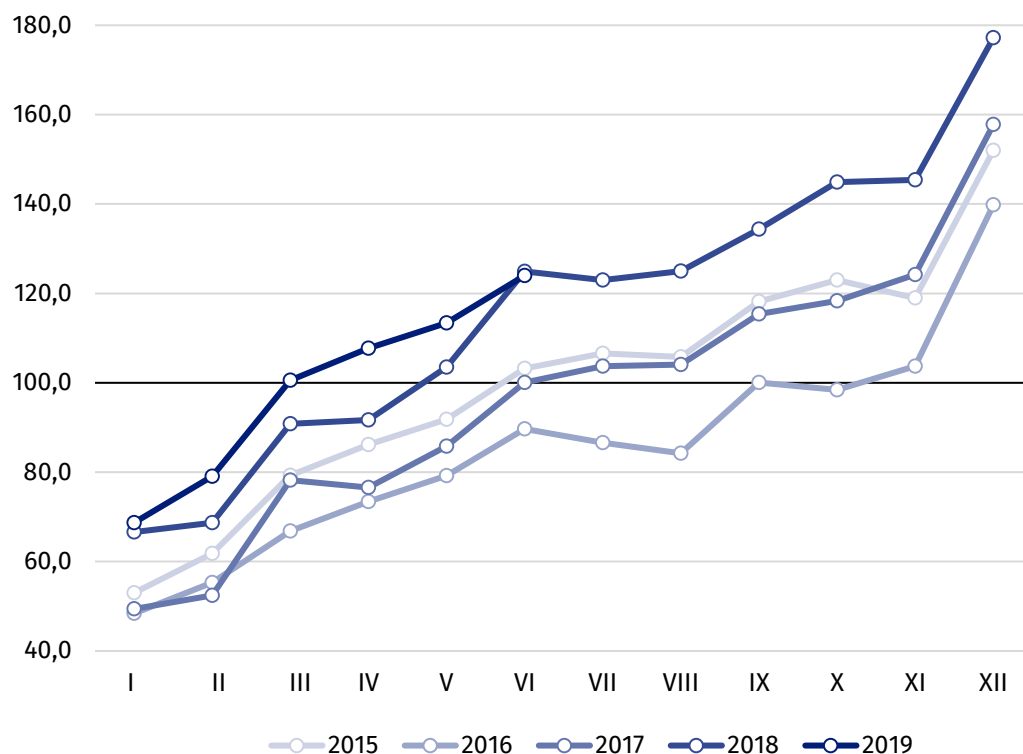
Value of construction and assembly production including investment works in June of 2019 was by 0.4% lower than in the corresponding period of 2018 (against an increase by 20.8% the year before), whereas works with a restoration character decreased by 1.3% (against an increase by 31.6% the year before).

In the period January-June of 2019 an increase of value investment works was by 6.7% higher than in the corresponding period of 2018 and works with a restoration character by 6.3% (against corresponding increases by 23.3% and 24.4% of 2018).

In June of this year in comparison to June of 2018 the decrease value of construction and assembly production was noted among entities performing specialised construction activities and the construction of building

Value of investment works in the first six months of 2019 increased by 6.7% y/y

Chart 1. Index numbers of construction and assembly production (constant prices) - average monthly base 2015=100²



² Reported data for June of 2019.

Index number of construction and assembly production in June of 2019 (in constant prices) compared to the average monthly value of 2015 was 124.0.

After eliminating the seasonal factors, construction and assembly production reached the level by 4.7% higher than in June of 2018 and by 0.1% higher in comparison to May of 2019.

Prepared by:

**Statistical Office in Lublin
Zofia Kurlej**

Tel: +48 81 533 23 01

e-mail: Z.Kurlej@stat.gov.pl

Issued by:

**The Spokesperson for the President of
Statistics Poland**

Karolina Banaszek

Tel: +48 22 608 3475, +48 22 608 3009

e-mail: rzecznik@stat.gov.pl

Press Office

Tel: +48 22 608 3491, +48 22 608 3804

e-mail: obslugaprasowa@stat.gov.pl



www.stat.gov.pl/en/



[@StatPoland](https://twitter.com/StatPoland)



[@GlownyUrzadStatystyczny](https://www.facebook.com/GlownyUrzadStatystyczny)

Related information

[Statistical Bulletin](#)

[Socio-economic situation of the country](#)

Data available in databases

[Knowledge Database - Construction](#)

[Macroeconomic Data Bank](#)

[Macroeconomic indicators](#)

[Local Data Bank](#)

Terms used in official statistics

[Sale of construction and assembly production](#)

[Seasonally unadjusted index of sale of construction and assembly production in constant prices](#)

[Seasonally adjusted index of sale of construction and assembly production](#)

[Sale of construction works with an investment character](#)

[Sale of construction works with a restoration character and other works](#)