

20.07.2023

Index numbers of construction and assembly production in June 2023 ¹

 **101.5**

Index number of construction and assembly production compared to June of 2022

According to preliminary data construction and assembly production (in constant prices) carried out domestically by construction enterprises employing more than 9 persons was in June 2023 by 1.5% higher than in the same period in 2022 (an increase of 6.0% in the corresponding period of 2022) and by 7.6% higher compared to May 2023 (an increase of 5.4% in the corresponding period of 2022).

Table 1. Index numbers of construction and assembly production (constant prices)

SPECIFICATION	06 2023		01-06 2023 ²
	05 2023=100	06 2022=100	01-06 2022=100
CONSTRUCTION	107.6	101.5	103.8
Construction of buildings ^Δ	105.6	94.3	94.7
Civil engineering works ^Δ	111.1	105.9	110.8
Specialised construction activities	104.4	103.8	106.6

^Δ Abbreviated form according to PKD 2007.

Construction and assembly production in June 2023, compared to the corresponding period of 2022, increased in entities dealing mainly with civil engineering works (5.9%) and in entities performing specialised construction activities (3.8%) whereas the decrease was noted in entities whose basic type of activity was construction of buildings (5.7%).

Compared to May 2023, the increase was noted in all divisions of construction, in entities whose basic type of activity was civil engineering works of 11.1%, dealing mainly with construction of buildings of 5.6% and performing specialised construction activities of 4.4%.

In the period of January-June 2023, in relation to the same period of the previous year, an increase in the sales of construction and assembly production was noted in entities dealing

¹ Reported data; comprise enterprises employing over 9 persons, whose the main type of activity is included in the section F "Construction" in accordance with the Polish Classification of Activities (PKD 2007).

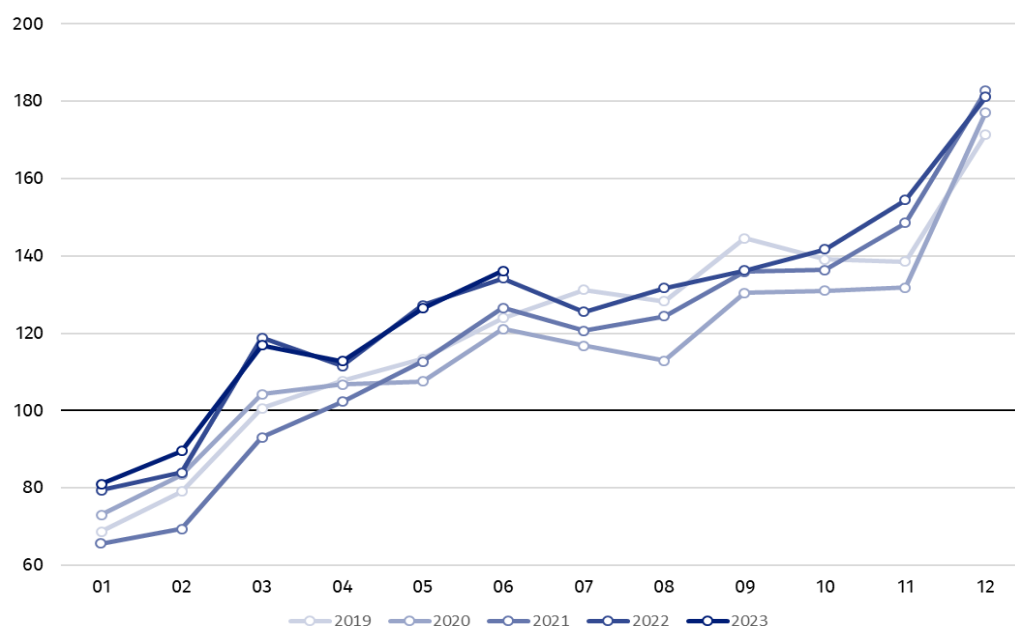
² Data including final information on production and prices in May and reported data in June.

mainly with civil engineering works (10.8%) and performing specialised construction activities (6.6%), whereas a decrease was recorded in entities whose basic type of activity was construction of buildings (5.3%).

Construction and assembly production in June 2023, compared to corresponding month of 2022, increased for investment works by 13.0% and decreased for restoration works by 14.0% (respectively decrease 2.5% an increase of 20.1% in 2022).

In the period of January-June 2023, in relation to the corresponding period of 2022, there was an increase of 15.3% in the investment works (an increase of 6.5% in 2022) and a decrease of 11.9% in the works with a restoration character (an increase of 20.6% in 2022).

Chart 1. Index numbers of construction and assembly production (constant prices; average monthly base 2015=100)³



Index number of construction and assembly production in June 2023 (in constant prices), compared to the average monthly value of 2015, was 136.2.

In June 2023, after eliminating the seasonal factors, construction and assembly production reached the level by 2.4% higher than in the corresponding month of the previous year and by 0.5% lower in comparison to May 2023.

In case of quoting Statistics Poland data, please provide information: “Source of data: Statistics Poland” and in case of publishing calculations made on data published by Statistics Poland, please include the following disclaimer: “Own study based on figures from Statistics Poland”.

³ Reported data for June 2023.

Prepared by:
Statistical Office in Lublin

Director Krzysztof Markowski

Phone: (+48) 695 255 301

Issued by:
**The Spokesperson for the President of Statistics
Poland**

Karolina Banaszek

Phone: (+48) 695 255 011

Press Office

Phone: (+48 22) 608 38 04

e-mail: obslugaprasowa@stat.gov.pl



www.stat.gov.pl/en/



[@StatPoland](https://twitter.com/StatPoland)



[@GlownyUrzadStatystyczny](https://www.facebook.com/GlownyUrzadStatystyczny)



[gus_stat](https://www.instagram.com/gus_stat)



[glownyurządstatystycznygus](https://www.youtube.com/glownyurządstatystycznygus)



[glownyurządstatystyczny](https://www.linkedin.com/company/glownyurządstatystyczny)

Related information

[Statistical Bulletin](#)

[Socio-economic situation of the country](#)

Data available in databases

[Knowledge Databases - Construction](#)

[Knowledge Databases - Construction \(new\)](#)

[Macroeconomic Data Bank](#)

[Macroeconomic indicators](#)

[Local Data Bank](#)

Terms used in official statistics

[Sale of construction and assembly production](#)

[Seasonally unadjusted index of sale of construction and assembly production in constant prices](#)

[Seasonally adjusted index of sale of construction and assembly production](#)

[Sale of construction works with an investment character](#)

[Sale of construction works with a restoration character and other works](#)