

21.10.2022

Index numbers of construction and assembly production in September 2022 ¹

 **100.3**

Index number of construction and assembly production as compared to September of 2021

According to preliminary data construction and assembly production (in constant prices) carried out domestically by construction enterprises employing more than 9 persons was in September 2022 by 0.3% higher than a year before (an increase of 4.2% the year before) and by 3.5% higher compared with August 2022 (an increase of 9.3% the year before).

Table 1. Index numbers of construction and assembly production (constant prices)

SPECIFICATION	09 2022		01-09 2022 ²
	08 2022=100	09 2021=100	01-09 2021=100
CONSTRUCTION	103.5	100.3	108.9
Construction of buildings ^Δ	100.6	108.7	120.3
Civil engineering works ^Δ	107.7	97.7	102.9
Specialised construction activities	100.2	95.1	104.8

^ΔAbbreviated form according PKD 2007.

Sales of construction and assembly production in September 2022 compared to the corresponding period of 2021, increased in entities dealing mainly with construction of buildings (8.7%), whereas decreases were noted in entities whose basic type of activity were civil engineering works (2.3%) and performing specialised construction activities (4.9%).

Compared with August 2022 increases in the value of works carried out were noted in entities dealing mainly with civil engineering works by 7.7%, in whose basic type of activity was construction of buildings by 0.6% and performing specialised construction activities by 0.2%.

¹ Reported data; comprise enterprises employing over 9 persons, whose the main type of activity is included in the section F "Construction" in accordance with the Polish Classification of Activities (PKD 2007).

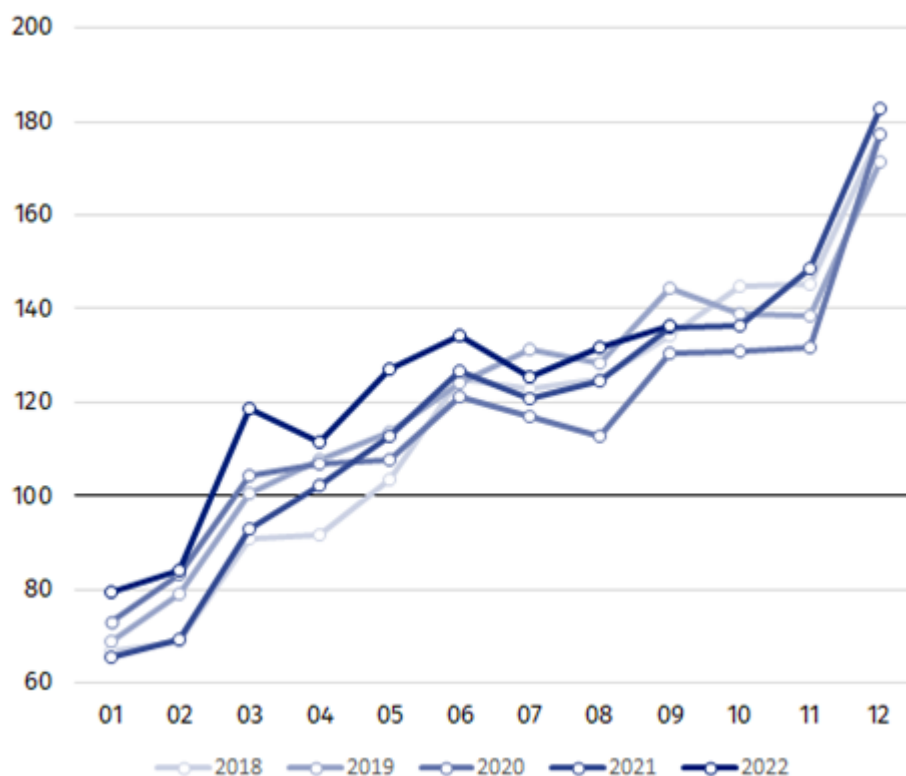
² Data including final information on production and prices in August and reported data in September.

In period of three quarters of 2022 sales of construction and assembly production, compared to the corresponding period of 2021, increased in all division of construction, in entities whose basic type of activity was construction of buildings (20.3%), performing specialised construction activities (4.8%) and dealing mainly with civil engineering works (2.9%).

Sales of construction and assembly production including investment works in September 2022 was by 4.5% lower than in the corresponding period of 2021, whereas works with a restoration character increased by 7.7% (increases of 1.7% and of 8.4% in the year before).

In the period of January-September 2022, in relation to the same period of previous year, there were increases of 4.0% in the value of investment works (a decrease of 3.6% in 2021) and of 16.3% in the value of works with a restoration character (an increase of 9.9% in 2021).

Chart 1. Index numbers of construction and assembly production (constant prices; average monthly base 2015=100)³



Index number of construction and assembly production in September 2022 (in constant prices), compared to the average monthly value of 2015, was 136.3.

After eliminating the seasonal factors, construction and assembly production reached the level by 3.0% higher than in September 2021 and by 5.9% lower in comparison to August 2022.

In case of quoting Statistics Poland data, please provide information: “Source of data: Statistics Poland” and in case of publishing calculations made on data published by Statistics Poland, please include the following disclaimer: “Own study based on figures from Statistics Poland”.

³ Reported data for September 2022.

Prepared by:
Statistical Office in Lublin

Director Krzysztof Markowski

Phone: (+48 81) 533 20 52

Press Office

Phone: (+48 22) 608 38 04

e-mail: obslugaprasowa@stat.gov.pl

Issued by:
**The Spokesperson for the President of Statistics
Poland**

Karolina Banaszek

Phone: (+48) 695 255 011



www.stat.gov.pl/en/



[@StatPoland](https://twitter.com/StatPoland)



[@GlownyUrzadStatystyczny](https://www.facebook.com/GlownyUrzadStatystyczny)



[gus_stat](https://www.instagram.com/gus_stat)



[glownyurządstatystycznygus](https://www.youtube.com/channel/UCglownyurządstatystyczny)



[glownyurządstatystyczny](https://www.linkedin.com/company/glownyurządstatystyczny)

Related information

[Statistical Bulletin](#)

[Socio-economic situation of the country](#)

Data available in databases

[Knowledge Database - Construction](#)

[Macroeconomic Data Bank](#)

[Macroeconomic indicators](#)

[Local Data Bank](#)

Terms used in official statistics

[Sale of construction and assembly production](#)

[Seasonally unadjusted index of sale of construction and assembly production in constant prices](#)

[Seasonally adjusted index of sale of construction and assembly production](#)

[Sale of construction works with an investment character](#)

[Sale of construction works with a restoration character and other works](#)