

21.03.2022

# Index numbers of construction and assembly production in February 2022 <sup>1</sup>


**121.2**

Index number of construction and assembly production as compared to February of 2021

According to preliminary data construction and assembly production (in constant prices) carried out domestically by construction enterprises employing more than 9 persons was in February 2022 by 21.2% higher than a year before (against a decrease of 16.9% the year before) and by 5.8% compared with January 2022 (an increase of 5.5% the year before).

**Table 1. Index numbers of construction and assembly production (constant prices)**

SPECIFICATION	02 2022		01-02 2022 <sup>2</sup>
	01 2022=100	02 2021=100	01-02 2021=100
<b>CONSTRUCTION</b>	<b>105.8</b>	<b>121.2</b>	<b>118.1</b>
Construction of buildings <sup>Δ</sup>	102.6	138.7	135.8
Civil engineering works <sup>Δ</sup>	100.0	102.9	102.3
Specialised construction activities	117.2	122.2	116.4

<sup>Δ</sup> Abbreviated form according PKD 2007.

Sales of construction and assembly production in February 2022, compared to the corresponding period of 2021, increased in all division of construction, in entities dealing mainly with construction of buildings (38.7%), performing specialised construction activities (22.2%) and in entities whose basic type of activity were civil engineering works (2.9%).

Compared with January 2022, increases in the value of works carried out were noted in entities performing specialised construction activities by 17.2%, in whose basic type of activity was construction of buildings by 2.6%. In entities dealing mainly with civil engineering works value was at the level similar to the one noted in the previous month.

<sup>1</sup> Reported data; comprise enterprises employing over 9 persons, whose the main type of activity is included in the section F "Construction" in accordance with the Polish Classification of Activities (PKD 2007).

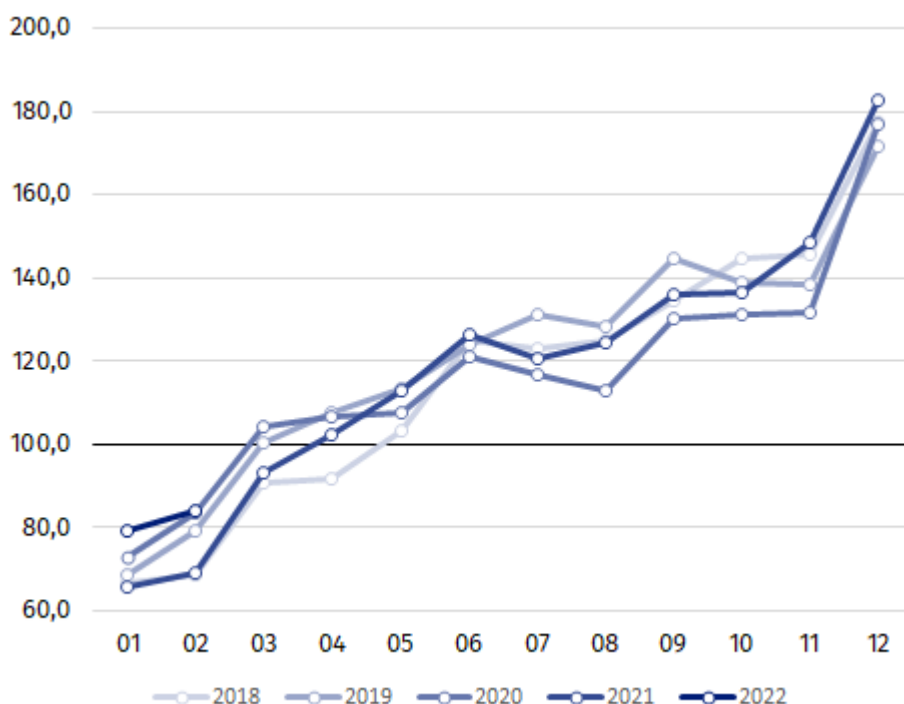
<sup>2</sup> Data including final information on production and prices in January and reported data in February.

In period of two months 2022, the increase in the value of construction and assembly production in the corresponding period of 2021 was noted in entities whose basic type of activity was construction of buildings (35.8%), performing specialised construction activities (16.4%) and dealing mainly with civil engineering works (2.3%).

Sales of construction and assembly production in February 2022, compared to the corresponding period of 2021 increased both for investment works by 13.8% and restoration works by 32.5% (against a decrease of 21.9% and 7.7% in the year before).

In the period January-February 2022 an increase in the value of investment works was by 11.6% higher than in the corresponding period of 2021, and works with a restoration character by 27.8% (against corresponding decreases by 17.8% and 4.2% in 2021).

**Chart 1. Index numbers of construction and assembly production (constant prices; average monthly base 2015=100)<sup>3</sup>**



Index number of construction and assembly production in February 2022 (in constant prices), compared to the average monthly value of 2015, was 84.0.

After eliminating the seasonal factors, construction and assembly production reached the level by 19.1% higher than in February 2021 and by 6.0% lower in comparison to January 2022.

In case of quoting Statistics Poland data, please provide information: "Source of data: Statistics Poland" and in case of publishing calculations made on data published by Statistics Poland, please include the following disclaimer: "Own study based on figures from Statistics Poland".

<sup>3</sup> Reported data for February 2022.

Prepared by:  
**Statistical Office in Lublin**

**Director Krzysztof Markowski**

Phone: (+48 81) 533 20 52

Issued by:  
**The Spokesperson for the President of Statistics  
Poland**

**Karolina Banaszek**

Phone: (+48) 695 255 011

**Press Office**

Phone: (+48 22) 608 38 04

**e-mail: [obslugaprasowa@stat.gov.pl](mailto:obslugaprasowa@stat.gov.pl)**



[www.stat.gov.pl/en/](http://www.stat.gov.pl/en/)



[@StatPoland](https://twitter.com/StatPoland)



[@GlownyUrzadStatystyczny](https://www.facebook.com/GlownyUrzadStatystyczny)



[gus\\_stat](https://www.instagram.com/gus_stat)



[glownyurządstatystycznygus](https://www.youtube.com/glownyurządstatystycznygus)



[glownyurządstatystyczny](https://www.linkedin.com/company/glownyurządstatystyczny)

**Related information**

[Statistical Bulletin](#)

[Socio-economic situation of the country](#)

**Data available in databases**

[Knowledge Database - Construction](#)

[Macroeconomic Data Bank](#)

[Macroeconomic indicators](#)

[Local Data Bank](#)

**Terms used in official statistics**

[Sale of construction and assembly production](#)

[Seasonally unadjusted index of sale of construction and assembly production in constant prices](#)

[Seasonally adjusted index of sale of construction and assembly production](#)

[Sale of construction works with an investment character](#)

[Sale of construction works with a restoration character and other works](#)