

Index numbers of construction and assembly production in October 2019^{a)}

22.11.2019


96.0

Index number of construction and assembly production as compared to October of 2018

In October 2019, the value of construction and assembly production in constant prices decreased on a monthly basis and increased on an accrued basis, compared to corresponding periods of the previous year.

According to preliminary data construction and assembly production (in constant prices) carried out domestically by construction enterprises employing more than 9 persons was in October 2019 by 4.0% lower than a year before and by 3.8% lower compared with September this year (against increases accordingly by 22.5% and by 7.9% the year before). In the period January-October 2019 construction and assembly production was by 3.6% higher in comparison to the same period of 2018, which saw an increase of 17.9%.

In comparison to September 2019 decrease in the value of construction and assembly production was recorded

Table 1. Index numbers of construction and assembly production (constant prices)

SPECIFICATION	X 2019		I-X 2019 ¹
	IX 2019=100	X 2018=100	I-X 2018=100
CONSTRUCTION	96.2	96.0	103.6
Construction of buildings ^Δ	101.3	99.6	102.7
Civil engineering works ^Δ	89.3	91.4	104.5
Specialised construction activities	104.3	100.4	103.4

^Δ Abbreviated form according PKD 2007.

¹ Data including final information on production and prices in September and reported data in October.

^{a)} Reported data; comprise enterprises employing over 9 persons, whose the main type of activity is included in the section F "Construction" in accordance with the Polish Classification of Activities (PKD 2007).

In comparison to October 2018 an increase in the value of construction and assembly production was recorded in entities performing specialised construction activities (0.4%). Decreases have noticed in entities dealing mainly with construction of buildings (0.4%) and in entities whose basic type of activity were civil engineering works (8.6%).

Compared with September 2019, increases in the value of works carried out were noted in two divisions of construction, i.e. in entities whose basic type of activity was construction of buildings – by 1.3%, in entities performing specialised construction activities – by 4.3%, whereas a decrease by 10.7% was noted in entities whose basic type of activity were civil engineering works.

In the period January-October 2019 the highest increase in the value of construction and assembly production (4.5%) was recorded in entities whose basic type of activity were civil engineering works. Increases were also noted in entities dealing mainly with construction of buildings (2.7%) and performing specialised construction activities (3.4%).

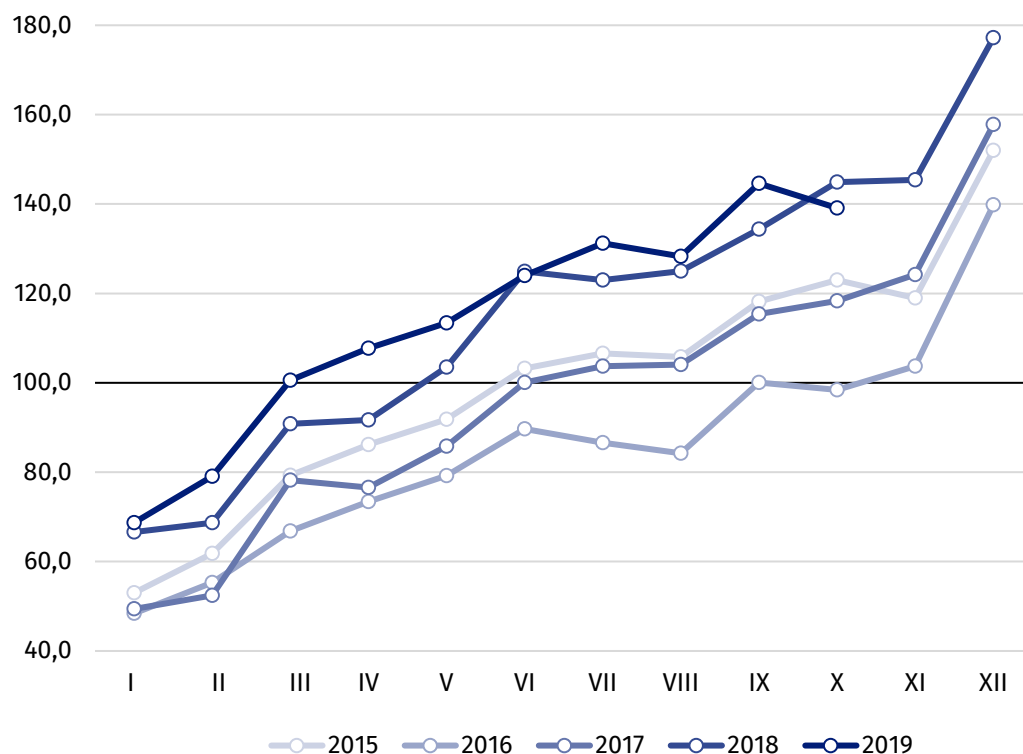
Value of construction and assembly production including investment works in October 2019 was by 6.7% lower than in the corresponding period of 2018 (against an increase by 19.6% the year before), whereas works with a restoration character increased by 0.3% (against an increase by 27.6% the year before).

In the period January-October 2019 an increase in the value of investment works was by 3.4% higher than in the corresponding period of 2018 and works with a restoration character - by 3.9% (against corresponding increases by 16.2% and 20.7% in 2018).

In October this year in comparison to October 2018 an increase in the value of construction and assembly production was noted among entities performing specialised construction activities

Value of investment works in the first ten months of 2019 increased by 3.4% y/y

Chart 1. Index numbers of construction and assembly production (constant prices) - average monthly base 2015=100²



² Reported data for October 2019.

Index number of construction and assembly production in October 2019 (in constant prices) compared to the average monthly value of 2015 was 139.1.

After eliminating the seasonal factors, construction and assembly production reached the level by 1.1% lower than in October 2018 and by 5.6% lower in comparison to September 2019.

Prepared by:

**Statistical Office in Lublin
Zofia Kurlej**

Tel: +48 81 533 23 01

e-mail: Z.Kurlej@stat.gov.pl

Issued by:

**The Spokesperson for the President of
Statistics Poland**

Karolina Dawidziuk

Tel: +48 22 608 34 75, +48 22 608 30 09

e-mail: rzecznik@stat.gov.pl

Press Office

Tel: +48 22 608 34 91, +48 22 608 38 04

e-mail: obslugaprasowa@stat.gov.pl



www.stat.gov.pl/en/



[@StatPoland](https://twitter.com/StatPoland)



[@GlownyUrzadStatystyczny](https://www.facebook.com/GlownyUrzadStatystyczny)

Related information

[Statistical Bulletin](#)

[Socio-economic situation of the country](#)

Data available in databases

[Knowledge Database - Construction](#)

[Macroeconomic Data Bank](#)

[Macroeconomic indicators](#)

[Local Data Bank](#)

Terms used in official statistics

[Sale of construction and assembly production](#)

[Seasonally unadjusted index of sale of construction and assembly production in constant prices](#)

[Seasonally adjusted index of sale of construction and assembly production](#)

[Sale of construction works with an investment character](#)

[Sale of construction works with a restoration character and other works](#)