

Index numbers of industrial and construction - assembly production in December 2018.^{a)}

18.01.2019 r.

December was the following month of increase in sold production of industry.



Index number of sold production of industry as compared to December of 2017

In December of 2018, sold production of industry was by 2.8% higher than in December of 2017, whereas an increase by 12.2% was reported in construction-assembly production. In the period January-December of 2018, sold production of industry was by 5.8% higher than in the corresponding period of 2017 which saw a 6.6% increase, whereas construction-assembly production was by 17.9% higher than in the corresponding period of 2017 which saw a 12.1% increase.

Table 1. Index numbers of industrial and construction-assembly production in real time (constant prices)

| SPECIFICATION | XII 2018 | | | I-XII 2018 ^{b)} |
|--|--------------|--------------|-----------------------------|--------------------------|
| | XI 2018=100 | XII 2017=100 | monthly average of 2015=100 | I-XII 2017=100 |
| INDUSTRY | 88.5 | 102.8 | 109.7 | 105.8 |
| Mining and quarrying | 94.9 | 91.1 | 86.7 | 101.0 |
| Manufacturing | 86.1 | 102.1 | 108.9 | 105.7 |
| Electricity, gas, steam and air conditioning supply | 110.7 | 113.4 | 127.1 | 109.0 |
| Water supply; sewerage waste management and remediation activities | 99.5 | 105.1 | 116.8 | 106.1 |
| CONSTRUCTION | 121,8 | 112,2 | 177,1 | 117,9 |

^{a)} Reported data; comprise enterprises employing over 9 persons.

^{b)} Data including final information on production and prices in November and reported data – in December.

INDUSTRY

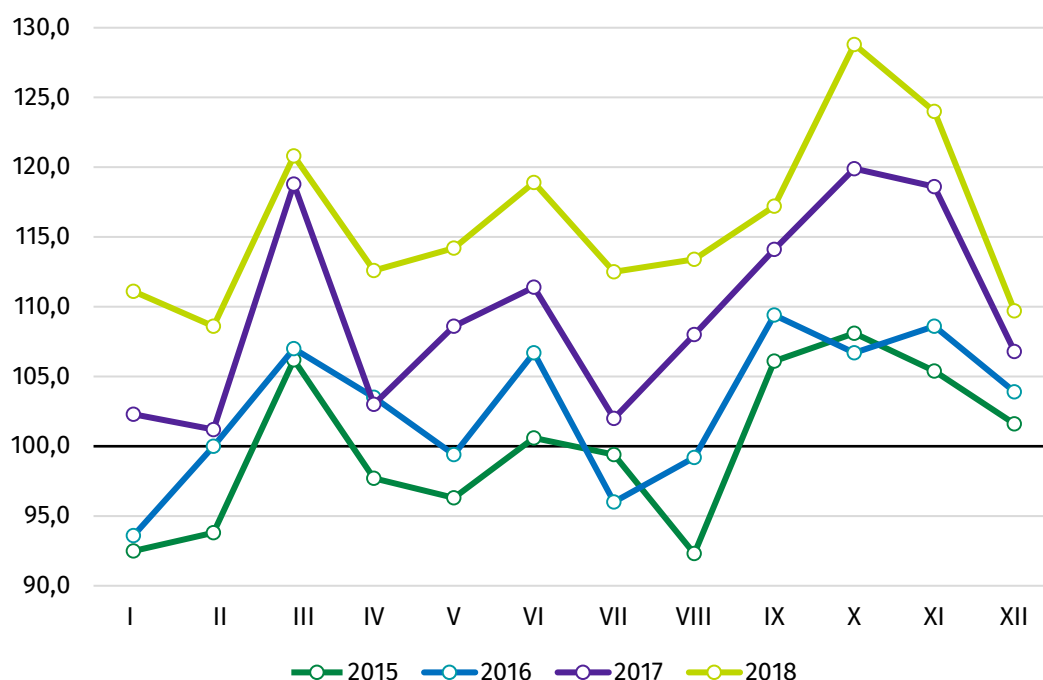
According to the preliminary data, **sold production of industry** in constant prices (in enterprises employing more than 9 persons), in December of 2018, was by 2.8% higher than in the previous year (when there was also an increase of 2.8%) and by 11.5% lower than in November of 2018. After eliminating the seasonal factors, sold production of industry reached the level higher by 3.1% than in the corresponding month of 2017 and by 0.4% lower as compared to November of 2018.

As compared to December of 2017, an increase in sold production was reported in 17 (out of 34) industry divisions, among others, in manufacture of other transport equipment – by 33.6%, in repair and installation of machinery and equipment – by 16.1%, in manufacture of coke and refined petroleum products – by 14.9%, in electricity, gas steam and air conditioning supply – by 13.4%, in manufacture of electrical equipment – by 12.1% and manufacture of computer, electronic and optical products – by 5.0%. A decrease in sold production of industry, as compared to December of 2017, was recorded in 17 divisions, among others, in manufacture of pharmaceutical products – by 29.5%, manufacture of machinery and equipment – by 4.3%, in mining of coal and lignite – by 3.5%, in manufacture of basic metals – by 2.8%, manufacture of beverages – by 2.5%, manufacture of metal products – by 2.0%.

Increase in sold production of industry in December of 2018, as in the previous year, amounted to 2.8%.

Share of production value of industry divisions, which saw increase in their index numbers, stood at 71.9%.

Chart 1. Sold production of industry (average monthly level in 2015=100)



CONSTRUCTION

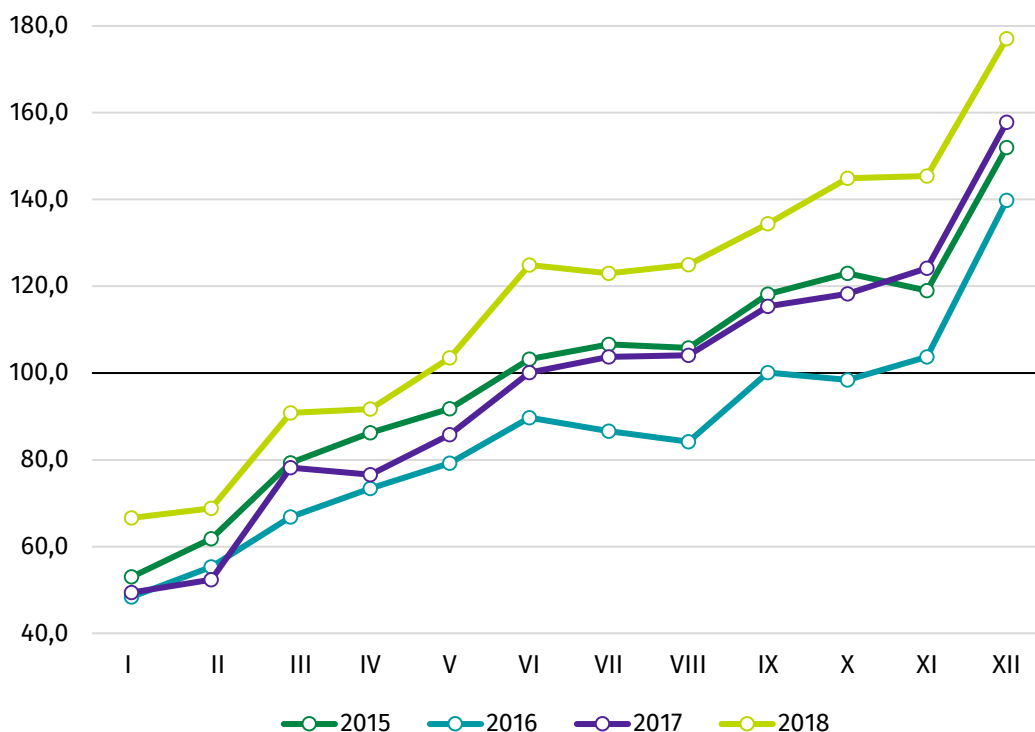
According to preliminary data, construction and assembly production (in constant prices), including investment, restoration and other works, carried out domestically by construction enterprises employing more than 9 persons, was in December of 2018 by 12.2% higher than a year before (against an increase by 12.8% the year before) and by 21.8% higher in comparison to November of 2018. After eliminating the seasonal factors, construction and assembly production reached the level by 11.4% higher than in December of 2017 and by 0.2% lower in comparison to November of 2018.

In comparison to December of 2017 the highest increase (24.2%) in construction and assembly was recorded in entities whose basic type of activity is the construction of buildings. Increases have noticed in entities dealing mainly with civil engineering works (11.4%) and in entities performing specialised construction activities (0.6%).

Compared to November of 2018 the increase of value works carried out was noted in entities whose basic type of activity is the construction of buildings (27.5%), the civil engineering works (22.6%) and in entities performing specialised construction activities (13.3%).

Since the beginning of 2018 an increase in the construction and assembly production has been maintained comparing to the same period of the previous year.

Chart 2. Construction and assembly production (average monthly level in 2015=100).



Prepared by:

Enterprises Department

Beata Kaczorowska

Tel: 22 608 34 16

e-mail: B.Kaczorowska@stat.gov.pl

Statistical Office in Lublin

Zofia Kurlej

Tel: 81 533 23 01

e-mail: Z.Kurlej@stat.gov.pl

Issued by:

**The Spokesperson for the President of
Statistics Poland**

Karolina Dawidziuk

Tel: 22 608 3475, 22 608 30 09

e-mail: rzecznik@stat.gov.pl

Press Office

tel.: (+48 22) 608 34 91, (+48 22) 608 38 04

fax: (+48 22) 608 38 86

e-mail: obslugaprasowa@stat.gov.pl



www.stat.gov.pl/en



[@StatPoland](https://twitter.com/StatPoland)



[@GlownyUrzadStatystyczny](https://www.facebook.com/GlownyUrzadStatystyczny)

Related information

[Statistical Bulletin](#)

[Socio-economic situation of the country](#)

Data available in databases

[Knowledge Database - Industrial Production](#)

[Knowledge Database - Construction](#)

[Macroeconomic Data Bank](#)

[Macroeconomic indicators](#)

[Local Data Bank](#)

Terms used in official statistics

[Sold production of industry](#)

[Sale of construction and assembly production](#)

[Seasonally un-adjusted volume index of sold production of industry](#)

[Seasonally adjusted volume index of sold production of industry](#)

[Seasonally unadjusted index of sale of construction and assembly production in constant prices](#)

[Seasonally adjusted index of sale of construction and assembly production](#)