

**PRICE INDICES OF SOLD PRODUCTION OF INDUSTRY
AND CONSTRUCTION AND ASSEMBLY PRODUCTION
in December 2016**

Specification	November 2016		December 2016		Jan.- December 2016
	October 2016= =100	corresponding period of 2015=100	November 2016= =100	November 2016= =100	Jan.- December 2015=100
PRICE INDICES OF SOLD PRODUCTION OF INDUSTRY					
TOTAL	101.2*	101.8*	103.0	101.0	99.8
Mining and quarrying	117.9*	117.3*	124.1	104.8	98.6
Manufacturing	100.6*	101.5*	102.6	100.9	100.1
Electricity, gas, steam and air conditioning supply	100.0*	98.1*	98.1	100.0	97.7
Water supply; sewerage, waste management and remediation activities	100.4*	102.8*	103.1	100.4	101.5
PRICE INDICES OF CONSTRUCTION AND ASSEMBLY PRODUCTION					
TOTAL	100.1	100.0	100.2	100.1	99.6

* Data revised.

According to preliminary data, **the prices of sold production of industry** in 2016 with relation to previous year dropped of 0.2%, in which the highest drop of prices - of 2.3% - was recorded in section electricity, gas, steam and air conditioning supply. The prices in mining and quarrying were lower of 1.4%. The increase of prices was recorded in sections: manufacturing - by 0.1% as well as in water supply; sewerage, waste management and remediation activities - by 1.5%.

It is estimated that in December 2016 the prices of sold production of industry were by 3.0% higher than in December 2015. The highest growth of prices was recorded in mining and quarrying by 24.1%, of which in mining of coal and lignite (by 32.8%) as well as in mining of metal ores (by 26.8%), but the drop of prices was recorded in other mining and quarrying (of 0.7%). The prices in section water supply; sewerage, waste management and remediation activities were higher by 3.1%. The growth of prices was also recorded in manufacturing by 2.6%, of which the biggest in manufacture of coke and refined petroleum products (by 27.3%). Higher than in December 2015 were also prices among other things in manufacture of basic metals (by 7.6%), of the printing and reproduction of recorded media (by 4.6%), of other transport equipment (by 3.8%), of food products (by 2.5%), of leather and related products (by 2.4%), of motor vehicles, trailers and semi-trailers (by 2.3%), of rubber and plastic products (by 1.5%), of other non-metallic mineral products (by 0.7%), of electrical equipment (by 0.5%), of pharmaceutical products (by 0.4%), of products of wood, cork, straw and wicker as well as of textiles (by 0.3% each). The price in manufacture of metal products, of computer, electronic and optical products as well as of wearing apparel reached the level similar to the one recorded in December 2015. Lower than in December 2015 were prices among other things in manufacture of beverages (of 0.1%), of paper and paper products (of 0.2%), of furniture (of 0.4%), of machinery and equipment (of 0.8%) as well as of chemicals and chemical products (of 1.5%). The prices in section electricity, gas, steam and air conditioning supply were lower than in December 2015 of 1.9%, of which in manufacture of gaseous fuels; distribution and trade of gaseous fuels through mains (of 6.0%) as well as in electric power generation, transmission and distribution (of 1.1%).

It is estimated that **the prices of construction and assembly production** in 2016 were of 0.4% lower than in the previous year. The drop was recorded in the prices in construction of buildings (of 0.8%) as well as in civil engineering (of 0.6%). The growth of prices was recorded in specialised construction activities (by 0.3%).

The prices of construction and assembly production in December of 2016 were by 0.2% higher than the one recorded in December 2015. The growth of prices was recorded in specialised construction activities (by 0.7%) as well as in construction of buildings (by 0.2%). The drop of prices was recorded in civil engineering (of 0.2%).

Fig. 1.

Dynamics of prices of sold production of industry in 2015-2016

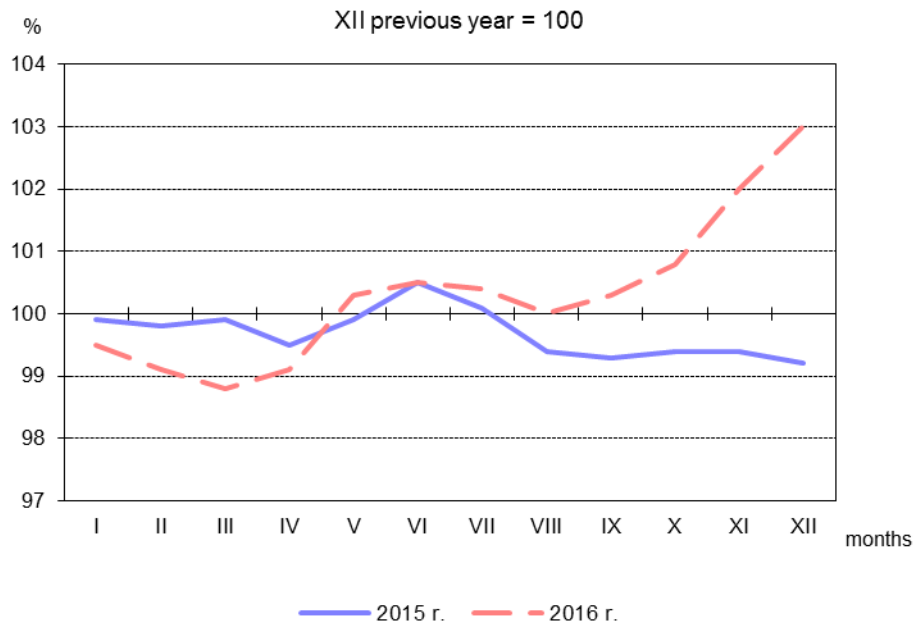


Fig. 2.

Dynamics of prices of construction and assembly production

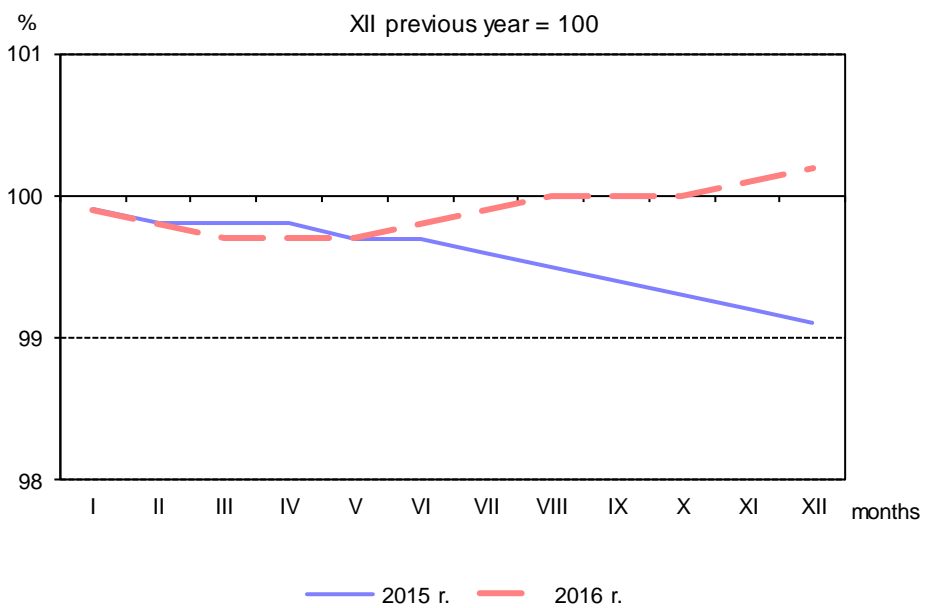


Fig. 3.

Dynamics of prices in 2016 XII previous year = 100

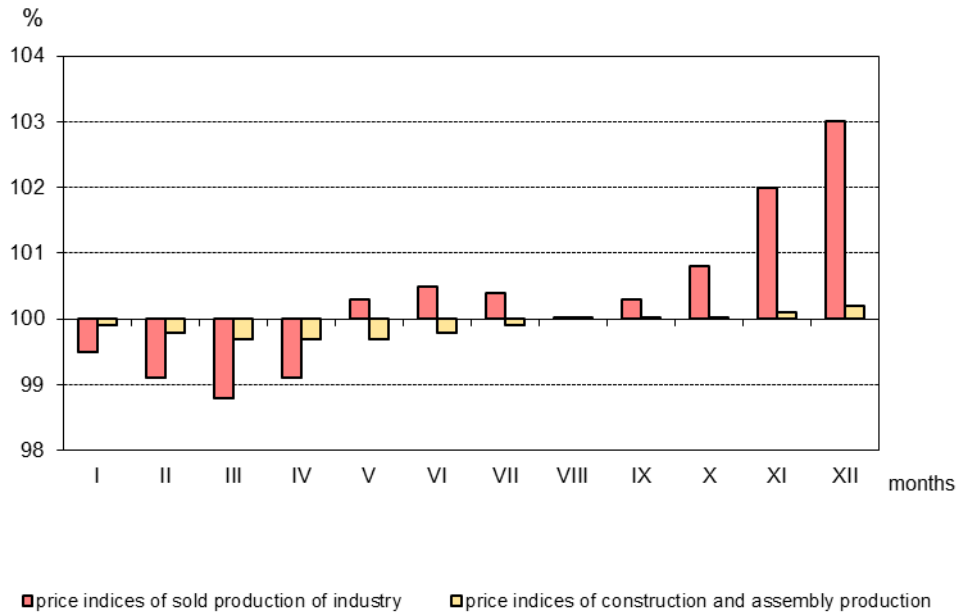


Fig. 4.

Dynamics of prices of sold production of industry sections in 2016 XII previous year = 100

