

**PRICE INDICES OF SOLD PRODUCTION OF INDUSTRY
AND CONSTRUCTION AND ASSEMBLY PRODUCTION
in February 2014**

Specification	January 2014		February 2014		Jan.- February 2014	
	December 2013= =100	corresponding period of 2013=100	January 2014= =100	December 2013= =100	Jan.- February 2013=100	
PRICE INDICES OF SOLD PRODUCTION OF INDUSTRY						
TOTAL	100.0*	99.0*	98.6	99.9	99.9	98.8
Mining and quarrying	100.7	92.1	90.7	99.0	99.7	91.4
Manufacturing	99.9*	99.3*	98.8	99.9	99.8	99.0
Electricity, gas, steam and air conditioning supply	100.5	100.6	100.8	100.1	100.6	100.7
Water supply; sewerage, waste management and remediation activities	100.7*	100.9*	100.8	100.0	100.7	100.8
PRICE INDICES OF CONSTRUCTION AND ASSEMBLY PRODUCTION						
TOTAL	99.8	98.3	98.4	99.8	99.6	98.4

* Data revised.

According to preliminary data, **the prices of sold production of industry** in February of 2014 were of 0.1% lower than in the previous month. The highest drop of prices was recorded in mining and quarrying (of 1.0%), of which in mining of metal ores (of 2.0%) as well as in mining of coal and lignite (of 0.6%). Prices in manufacturing were also lower of 0.1%, in which in manufacture of computer, electronic and optical products (of 0.7%). The drop of prices was also recorded among other things in manufacture of rubber and plastic products, of furniture, of wearing apparel (of 0.6% each), of machinery and equipment, of other transport equipment, of printing and reproduction of recorded media (of 0.4% each), in manufacture of basic metals, of other non-metallic mineral products, of textiles (of 0.3% each), of food products, of products of wood, cork, straw and wicker (of 0.2%), of motor vehicles, trailers and semi-trailers, of metal products as well as of pharmaceutical products (of 0.1% each). However the prices were higher among other things in manufacture of chemicals and chemical products (by 0.1%), of beverages (by 0.2%), of electrical equipment, of paper and paper products (by 0.3% each), of leather and related products (by 0.5%) as well as of coke and refined petroleum products (by 0.8%). The prices in section water supply; sewerage, waste management and remediation activities reached the level similar to the one recorded in the January 2014, however in section electricity, gas, steam and air conditioning supply the growth of prices was recorded – by 0.1%.

In February of 2014 the prices of sold production of industry were of 1.4% lower than a year earlier. The drop of prices was recorded in mining and quarrying (of 9.3%) and in manufacturing (of 1.2%). The prices increased in sections: electricity, gas, steam and air conditioning supply as well as water supply; sewerage, waste management and remediation activities (by 0.8% each).

It is estimated that the **prices of construction and assembly production** in February of 2014 were of 0.2% lower than in the previous month. A drop price was recorded in construction of buildings, in civil engineering as well as in specialised construction activities (of 0.2% each).

In comparison to February of the previous year, the prices of construction and assembly production fell of 1.6%.

Fig. 1.

Dynamics of prices in 2013-2014
XII 2012 = 100

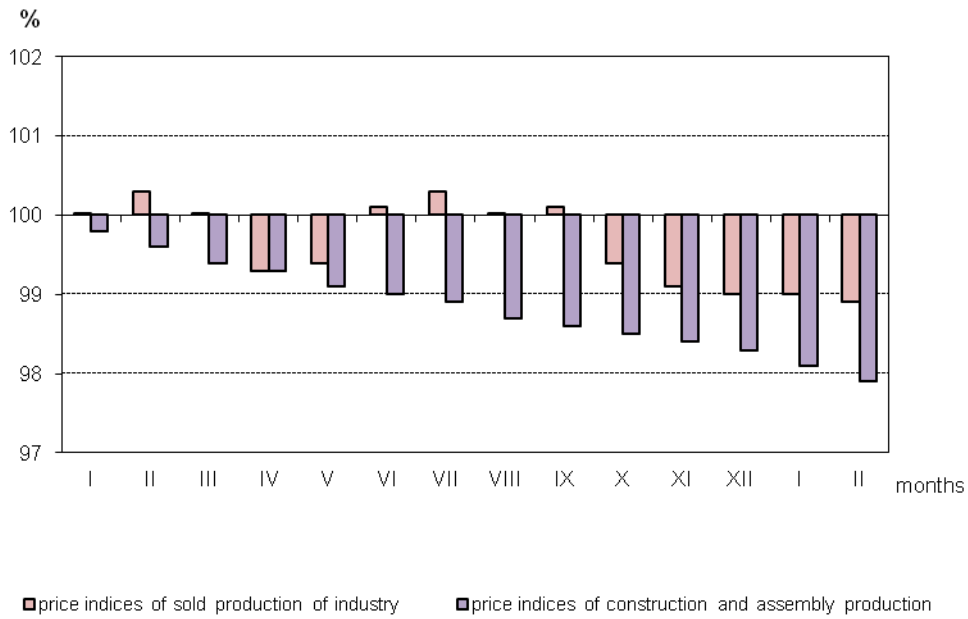


Fig. 2.

Dynamics of prices of sold production of industry sections in 2013-2014
XII 2012 = 100

