

**PRICE INDICES OF SOLD PRODUCTION OF INDUSTRY
AND CONSTRUCTION AND ASSEMBLY PRODUCTION
in December 2010**

Specification	November 2010		December 2010		Jan.- December 2010
	October 2010= =100	corresponding period of 2009=100		November 2010= =100	Jan.- December 2009=100
PRICE INDICES OF SOLD PRODUCTION OF INDUSTRY					
TOTAL	100.4*	104.7*	106.1	101.1	102.1
Mining and quarrying	101.7*	119.2*	123.4	105.6	117.8
Manufacturing	100.3*	103.5*	105.0	101.0	100.8
Electricity, gas, steam and air conditioning supply	100.0	105.1	105.2	100.1	103.3
Water supply; sewerage, waste management and remediation activities	100.2*	105.8*	105.9	100.6	106.1
PRICE INDICES OF CONSTRUCTION AND ASSEMBLY PRODUCTION					
TOTAL	100.0	100.0	99.9	100.0	99.9

* Data revised.

According to preliminary data, **the prices of sold production of industry** in 2010 with relation to previous year grew by 2.1%. The highest growth of prices was recorded in mining and quarrying (by 17.8%). The increase of prices was recorded in section water supply; sewerage, waste management and remediation activities (by 6.1%), in section electricity, gas, steam and air conditioning supply (by 3.3%) as well as in manufacturing (by 0.8%).

It is estimated that in December of 2010 the prices of sold production of industry were by 6.1% higher than in the previous year. The highest growth of prices was recorded in mining and quarrying (of 23.4%), of which in mining of metal ores (of 48.5%) and in mining of coal and lignite (of 13.4%). The prices in section water supply; sewerage, waste management and remediation activities raised by 5.9% and in section electricity, gas, steam and air conditioning supply - by 5.2%. The growth of prices was recorded in manufacturing (by 5.0%), of which the biggest in manufacture of coke and refined petroleum products (by 40.9%). Higher than in December of previous year were also prices among other things in manufacture of basic metals (by 17.9%), of paper and paper products (by 11.2%), of tobacco products (by 9.1%), of chemicals and chemical products (by 8.7%), of products of wood, cork, straw and wicker (by 4.8%), of food products (by 3.7%), of rubber and plastic products, of pharmaceutical products (by 3.6% each), of printing and reproduction of recorded media (by 2.9%), of leather and related products (by 2.6%), of beverages, of other transport equipment, of textiles (by 1.9% each) as well as of motor vehicles, trailers and semi-trailers (by 0.6%). However the drop was recorded in the prices among other things in manufacture of metal products, of furniture (of 0.4% each), of machinery and equipment (of 1.9%), wearing apparel (of 3.5%), of other non-metallic mineral products (of 3.7%), of computer, electronic and optical products (of 4.1%) as well as of electrical equipment (of 5.5%).

It is estimated that **the prices of construction and assembly production** in 2010 were of 0.1% lower than in the previous year (in comparison with growth by 0.2% in 2009). The drop was recorded in the prices in construction of buildings (of 0.4%) as well as in specialised construction (of 0.3%). However, the growth prices was recorded in civil engineering (by 0.5%).

The prices of construction and assembly production in December of 2010 were of 0.1% lower than the one recorded in the previous year. The drop was recorded in the prices in construction of buildings (of 0.6%). However, the growth prices was recorded in civil engineering as well as in specialised construction (by 0.6% each).

Fig. 1. Dynamics of prices of sold production of industry in 2009-2010

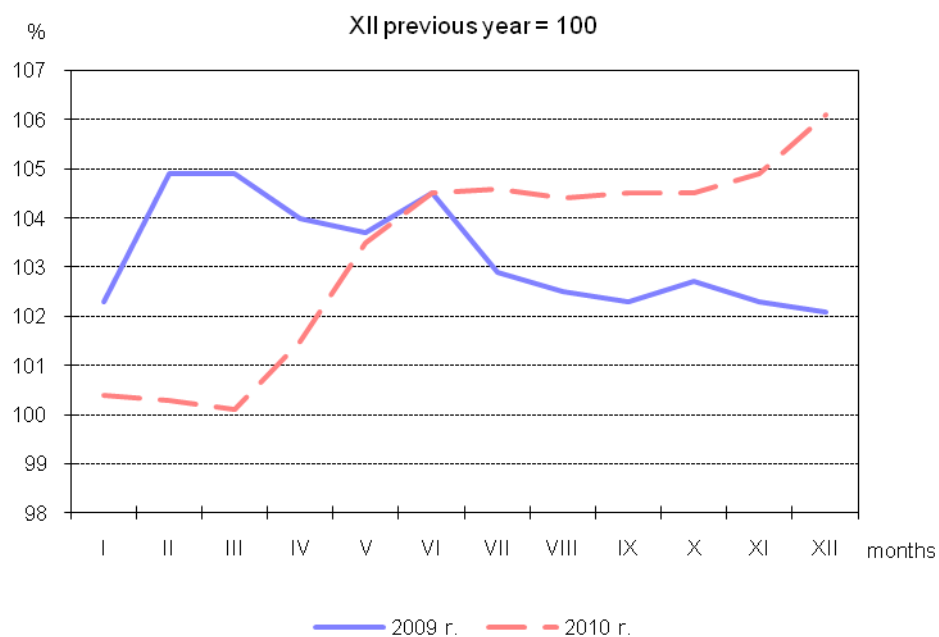


Fig. 2. Dynamics of prices of construction and assembly production in 2009-2010

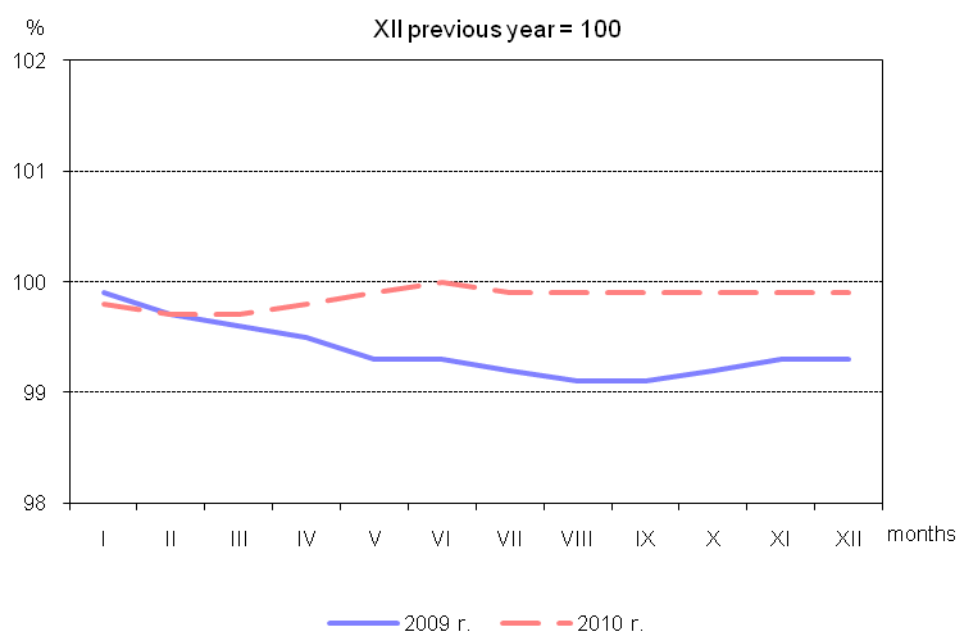


Fig. 3.

Dynamics of prices in 2010

XII previous year = 100

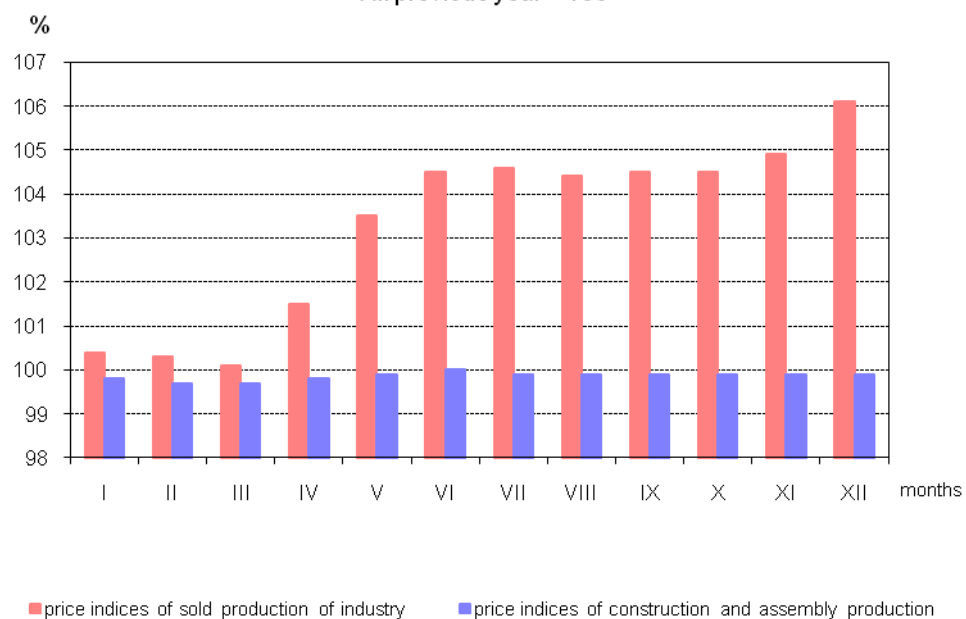


Fig. 4.

Dynamics of prices of sold production of industry sections in 2010

XII previous year = 100

