

Comparing youth unemployment figures in EU countries

Do unemployment figures reflect
marginalization of youth?

8th Workshop on Labour Force Survey Methodology , 23.-
24.5.2013

Liisa Larja, Statistics Finland

Motivation

- Misinterpretation of youth unemployment rate
- Youth unemployment = marginalization?
- Comparability of youth unemployment figures in different EU countries?
- *How* should we measure living conditions of the youth?

Nuorisotyöttömyyden aikapommi tikittää jo

EPA/LUCA PIERGIOVANNI



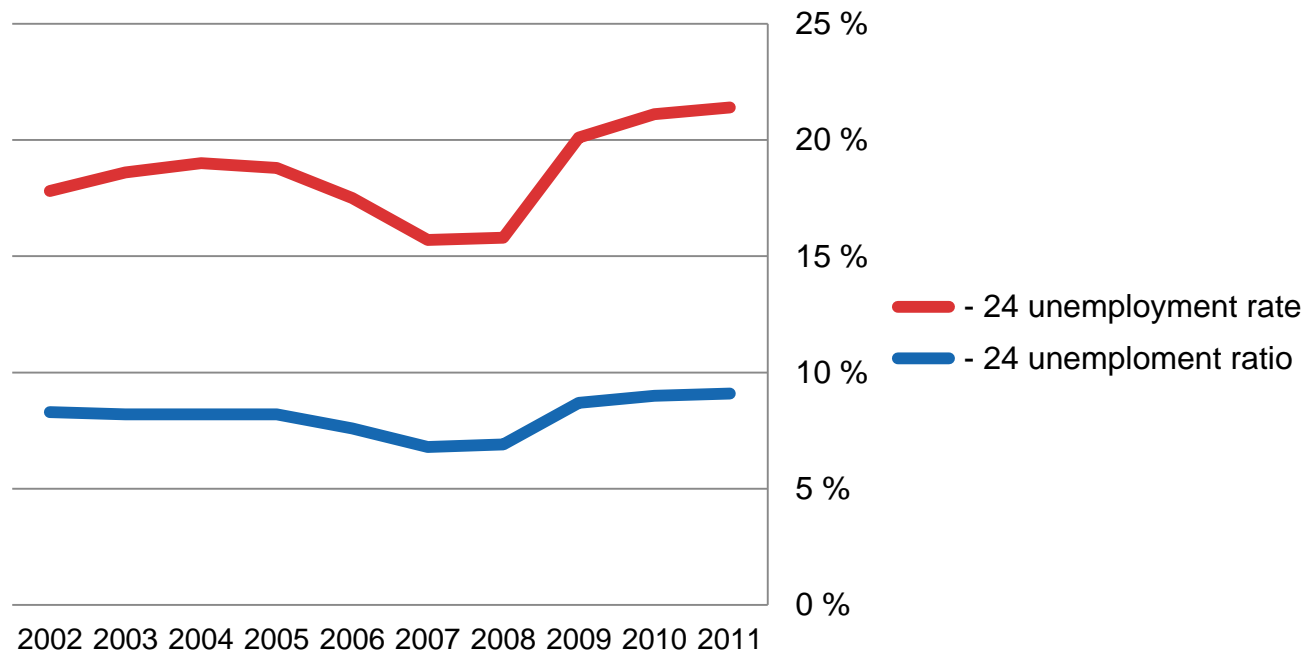
Nuorisotyöttömyys on noussut hälyttävän korkealle tasolle Euroopassa. Espanjan ja Kreikan nuorista työttömänä on yli puolet, muuallakin luvut aiheuttavat päänsärkyä. Nuorten työttömien joukot ovat kuin aikapommi, joka voi räjähtää milloin tahansa. Jos pommi räjähtää, mitkä ovat seuraukset?

Data

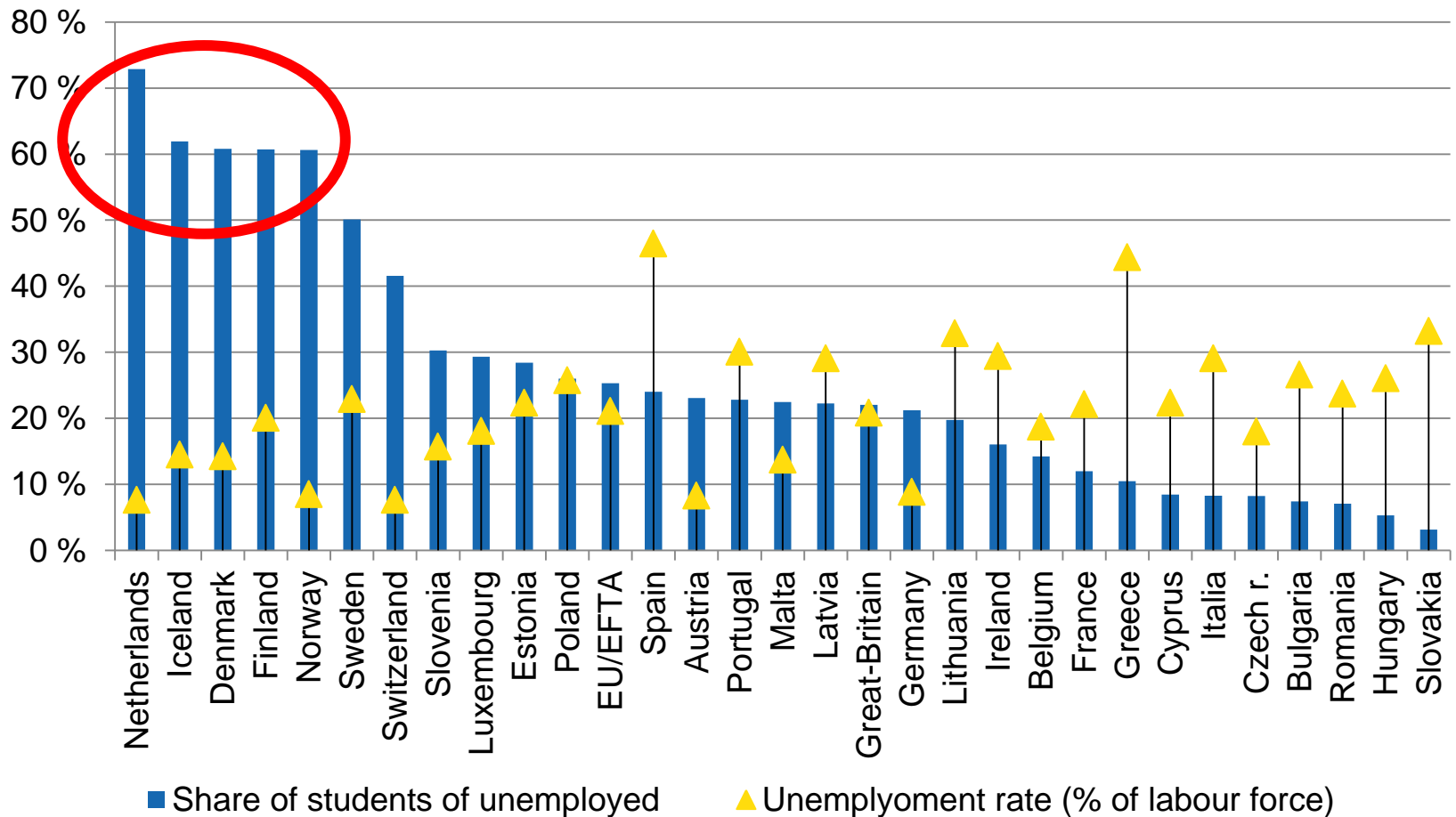
- EU Labour Force Survey micro-data from all EU- and EFTA-countries, except for Malta and Liechtenstein, 2007-2011

Unemployment rate refers to the share of unemployed from the labour force, not from all youth

- Labour force = employed +unemployed = less than 50 % of 15-24 year olds in EU27 (2011)

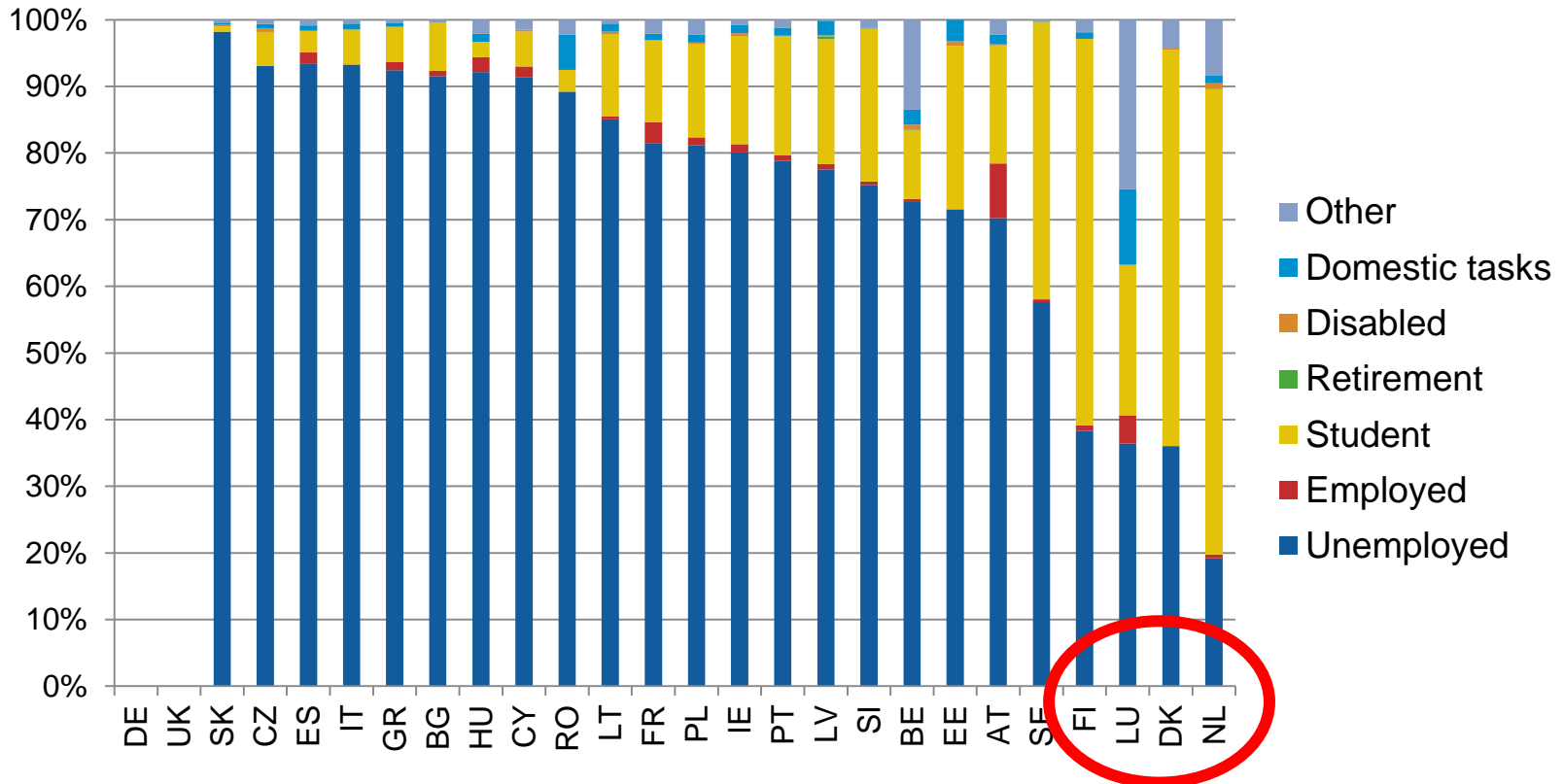


In Nordic countries over 50% of the young unemployed are students



In Nordic countries, the unemployed youth do not define themselves as unemployed

Main status of unemployed 15-24 years olds in 2011, conscripts excluded



The unemployment rate **does not** measure youth marginalization!

- Reflects only the situation of those in labour force – excludes the inactive population (=57%, EU27)
- Does not differentiate on whether the unemployed person is also a student
- → NEET-rate

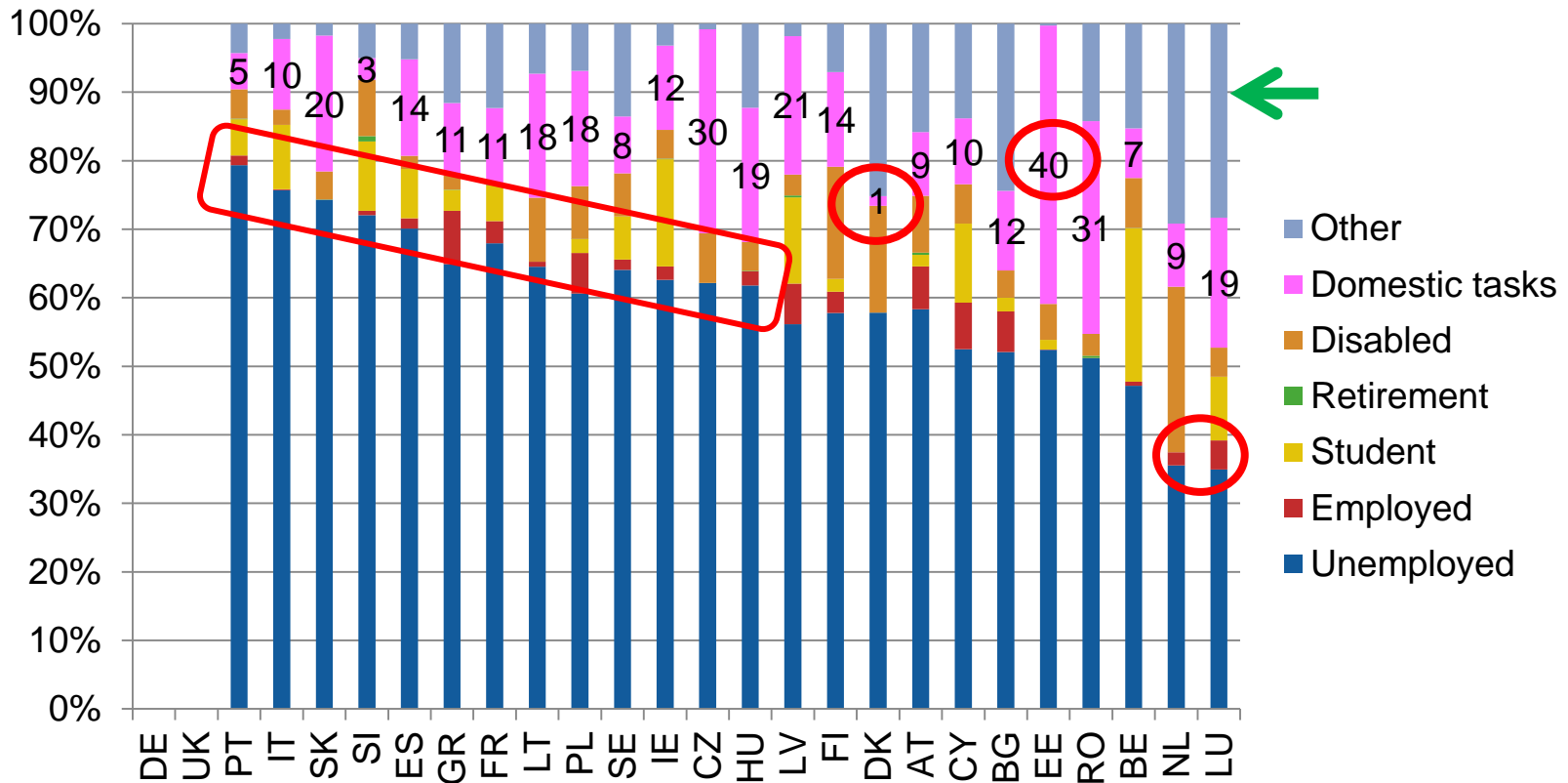
NEET= **N**ot **e**mployed (ILOSTAT)

Not in **e**ducation (EDUCSTAT)

Not in **t**raining (COURATT)

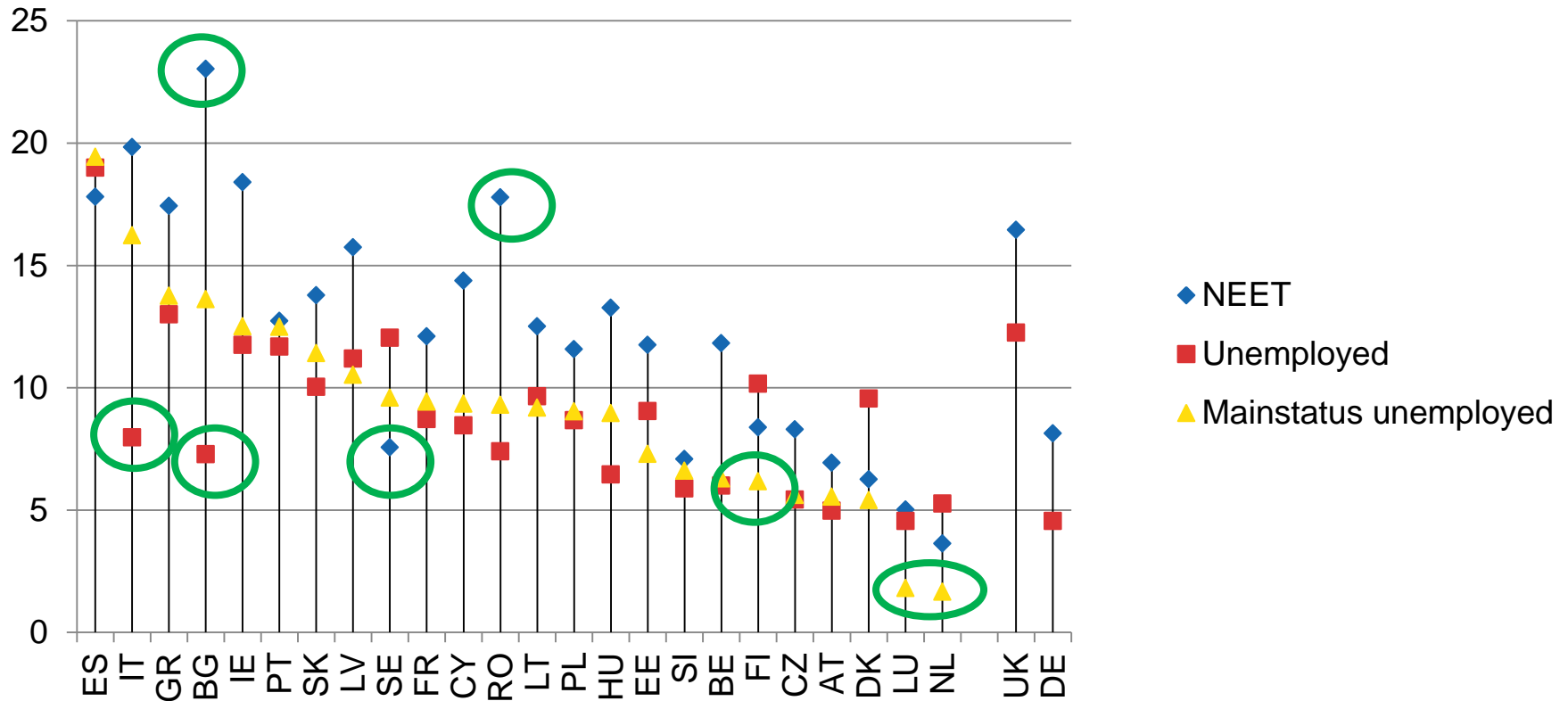
Also the NEET-rate captures very different groups in different countries

Mainstatus of NEET 15-24 years old in 2011, conscripts excluded



Comparing share of ILO-defined unemployment and NEET to self-defined unemployment

Share of 15-24 years old of all youth who are classified as NEET, who are unemployed by ILO definition and who describe their main activity as unemployed, in 2011, conscripts excluded



Using only self-defined main status?

Mainstatus of all 15-24 years old in 2011, conscripts excluded

