



# Measuring ILO status transitions for the EU: first interesting results

Frank Espelage – Eurostat F3 (Labour Market)  
[Frank.Espelage@ec.europa.eu](mailto:Frank.Espelage@ec.europa.eu)

8<sup>th</sup> Workshop on LFS methodology, Gdansk 2013

# Contents

1. General introduction
2. First quarter-on-quarter transition results
3. Summary and open issues

# General introduction

- Data linking across EU LFS datasets from 2010: 24 (Q-Q) and 25 (Y-Y) EU countries plus 6 EEA/candidate countries
- Assessment of successful linking: theoretical (rotation scheme) vs. actual overlap
- Methodological issues: correct underlying population for flow estimates, sample attrition, response errors, consistency flow/stock estimates -> (re-)weighting!

# General introduction

- First focus on transition rates and 3 labour market statuses employed, unemployed (incl. long-term unempl.), inactive
- Age groups 15-64/15-74 with subgroups 15-24, 25-64 etc.
- Q-Q: EU24 and Y-Y: EU25, other countries not included yet
- Eurostat weighting: start with 'target' quarter weights of flow sample, recalibrate to marginal distribution by labour status, sex, 3 age groups in that quarter

## Q-Q EU24 – basic transition rate tables

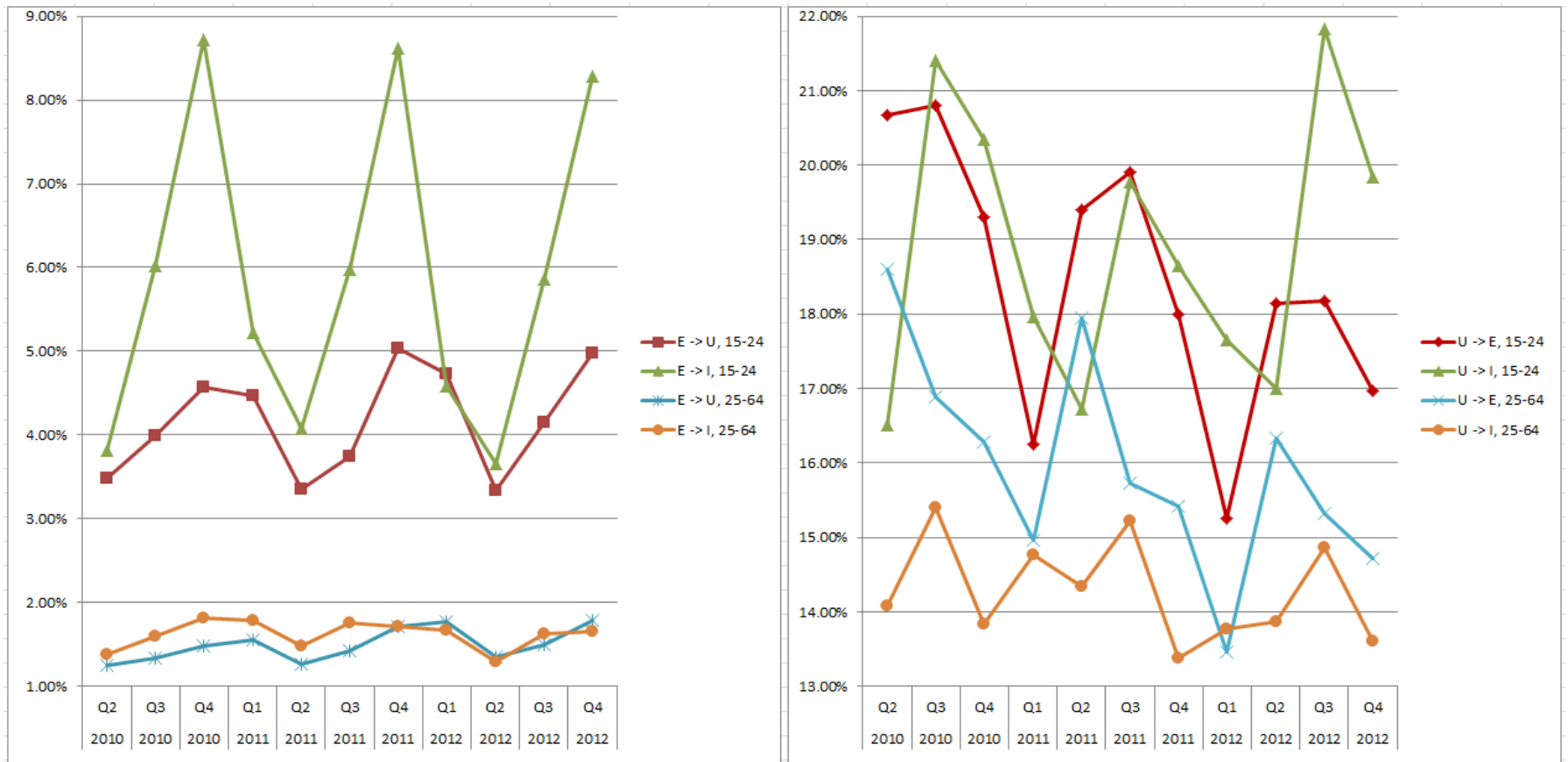
EU24, 15-64		2012 Q4		
2012 Q3	Employed	Unemployed	Inactive	
Employed	95.74%	2.05%	2.21%	
Unemployed	15.22%	69.76%	15.02%	
Inactive	3.80%	5.25%	90.94%	

Transition rates show seasonal pattern!

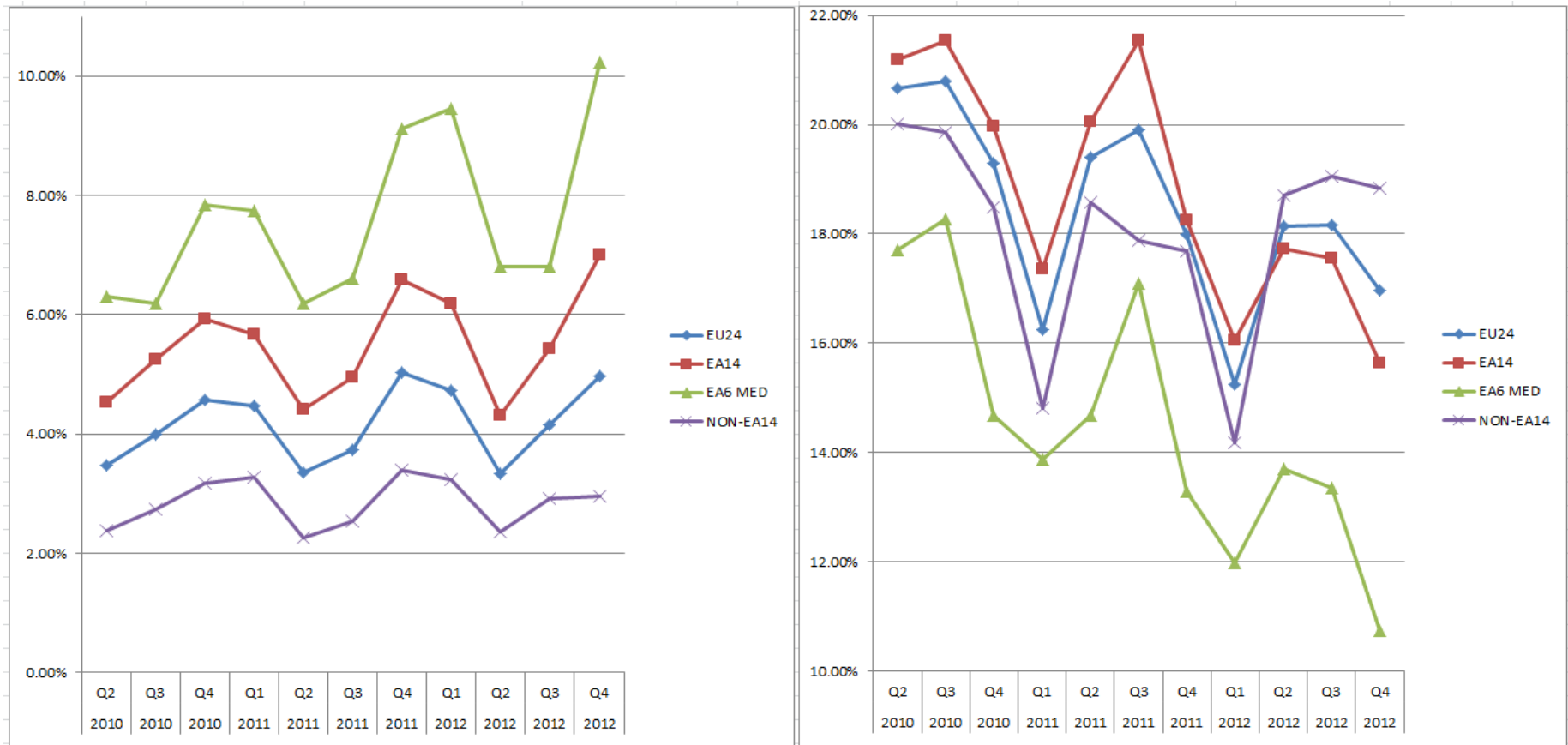
Differences (Q3-Q4 in 2012 vs. 2010) in percentage points

	Employed	Unemployed	Inactive
Employed	-0.08	0.29	-0.21
Unemployed	<b>-1.80</b>	<b>2.19</b>	-0.40
Inactive	-0.14	0.83	-0.69

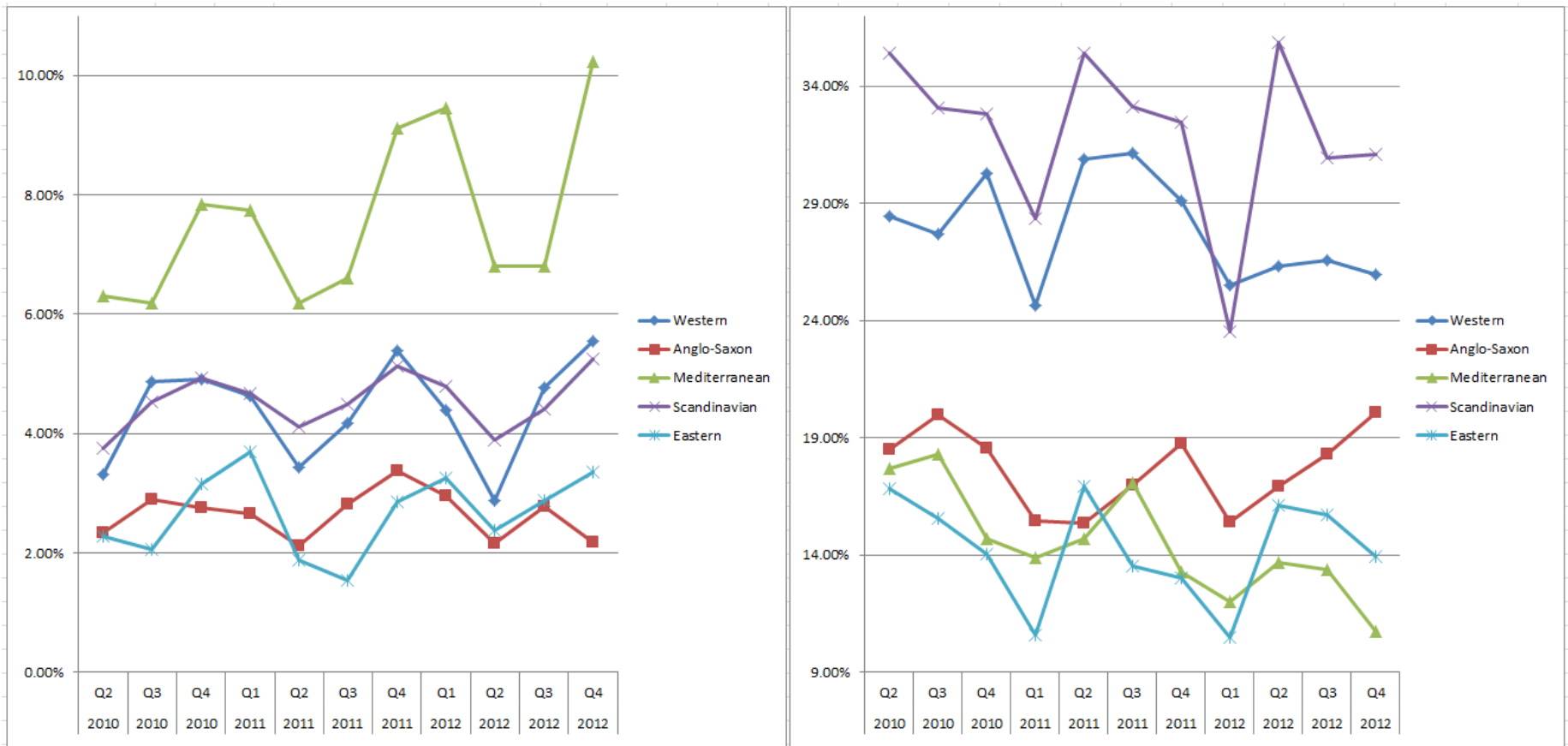
# Q-Q EU24 – E, U outflows by age group



# Q-Q – E->U and U->E, 15-24 by country group

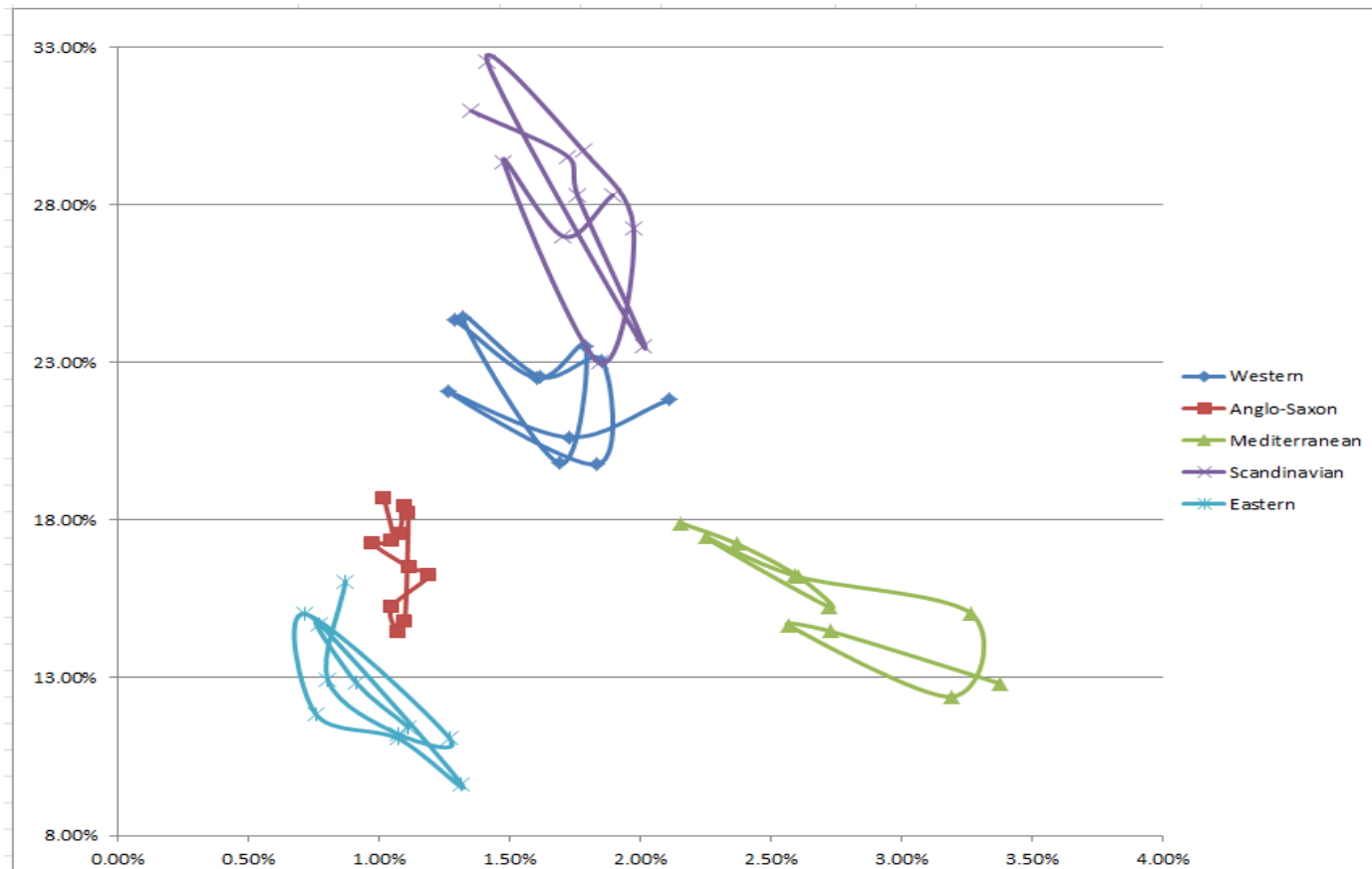


# Q-Q – E->U and U->E, 15-24 by country group

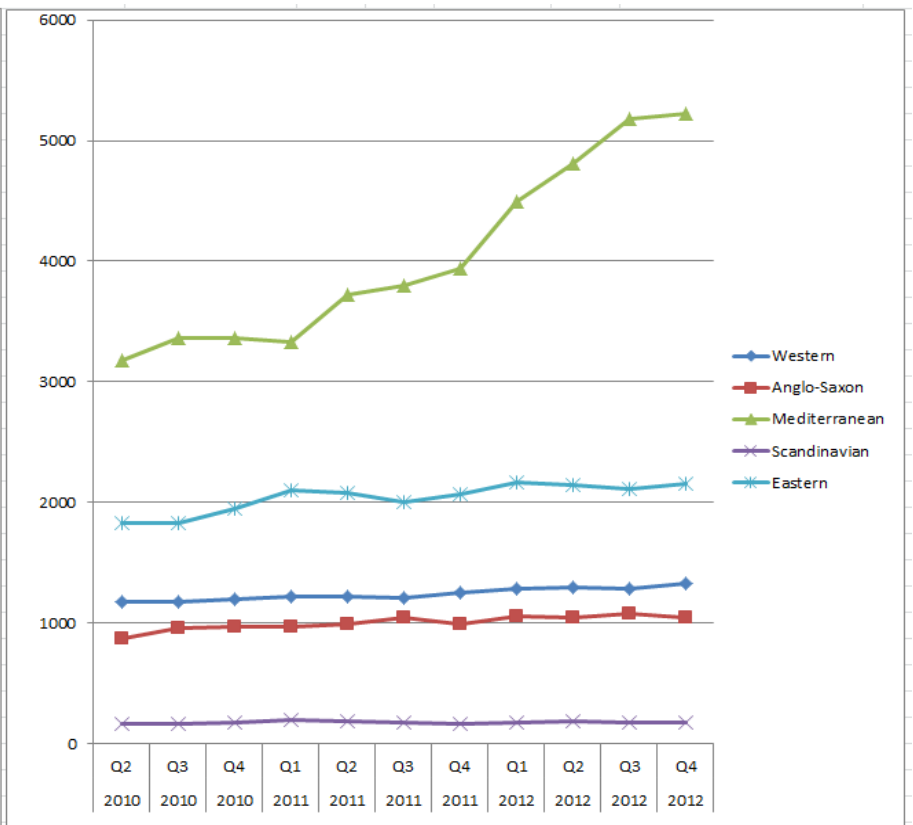
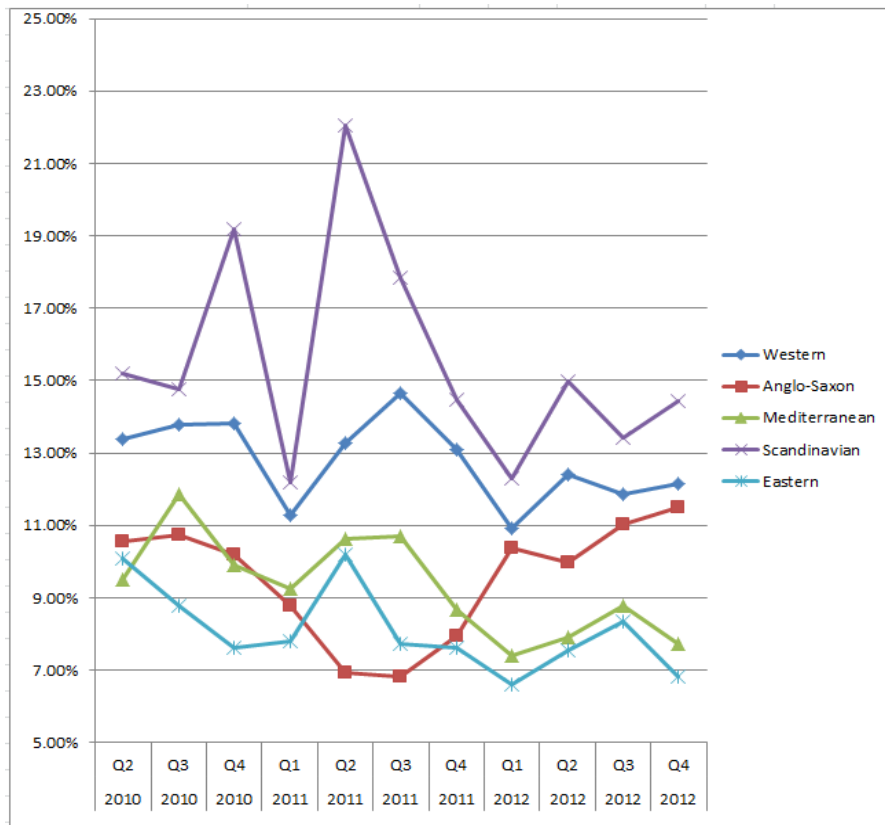




# Q-Q – E->U vs. U->E, 15-74 by country group



# Q-Q – Long-term unemployed, U->E transition rates and total LTU figures, 15-74 by country group

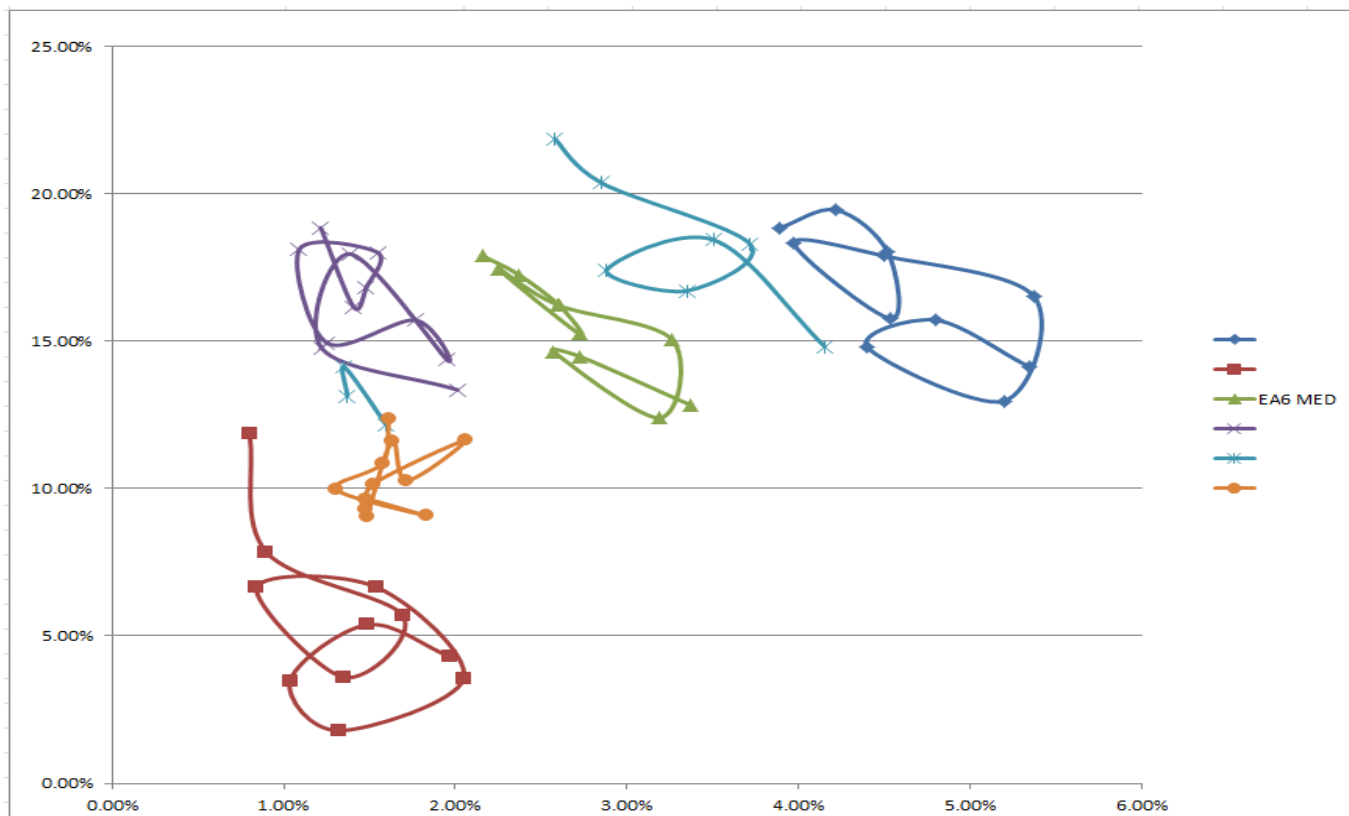


## Q-Q EA6 MED – comparison flow and stock estimates

### EA6 Mediterranean, unemployment inflows and outflows, 15-64 (in 1,000)

	Inflow	Outflow	Outflow - Inflow	U total	Development U total
2010 Q2	2.701	2.952	251	7.948	
2010 Q3	2.757	3.050	294	7.697	251
2010 Q4	3.134	2.643	-491	8.231	-534
2011 Q1	2.828	2.611	-217 b	8.578	-347
2011 Q2	2.849	3.061	212	8.299	278
2011 Q3	3.136	3.005	-131	8.481	-182
2011 Q4	3.692	2.831	-860	9.534	-1.053
2012 Q1	3.603	2.835	-767	10.420	-886
2012 Q2	3.253	3.369	116	10.431	-11
2012 Q3	3.370	3.509	139	10.406	24
2012 Q4	3.852	3.161	-690	11.216	-809

## Q-Q - E->U vs. U->E, 15-74 by country



## Summary and open issues

- First test results show analytical potential already
- More flow estimates' details make results even more interesting (e.g. country groups)
- High interest from policy users (DG EMPL) and ECB, first test calculations there as well -> need for progress in ESS to steer the developments

## Summary and open issues

- Start: Which country groups / age classes (young: 15-24 or 15-29) / more detailed categories (FTPT etc.)?
- Move to individual country data – weighting?
- Comparability of one common Eurostat approach vs. individual country data?

Thank you for your attention