

**LABOUR  
MARKET**

**DYNAMICS**

Ole Villund  
Statistics Norway

**Simple case:**

2 categories

2 points in time

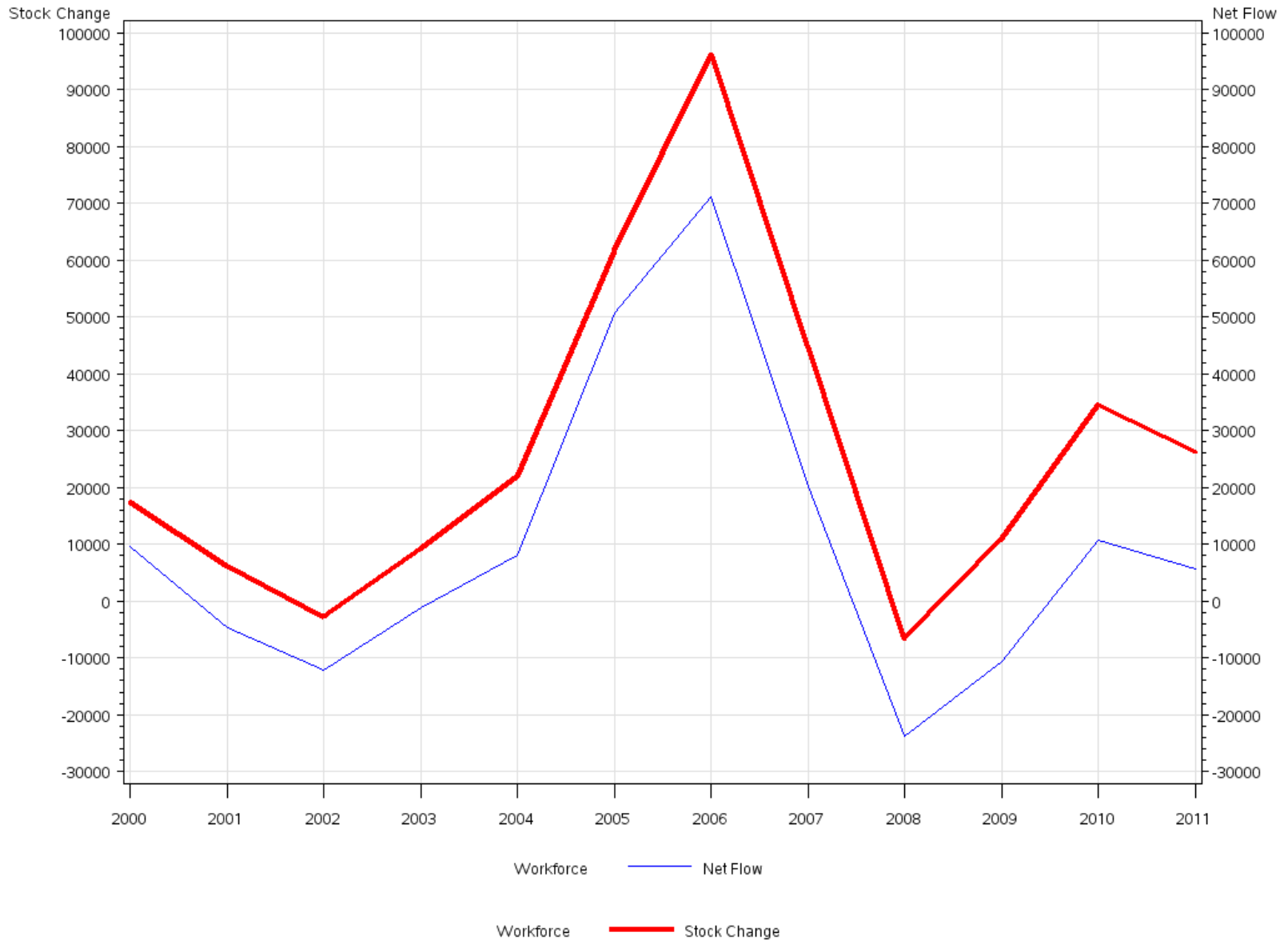
Workforce stocks and flows 4th Quarter 2010 - 2011. Register data. Residents 15-74 years old.

<i>Stocks</i>	<b>2010</b>	<b>2011</b>
<b>Total</b>	3 643 182	3 705 934
<b>Workforce</b>	2 575 659	2 610 127
<b>Inactive</b>	1 067 523	1 095 807

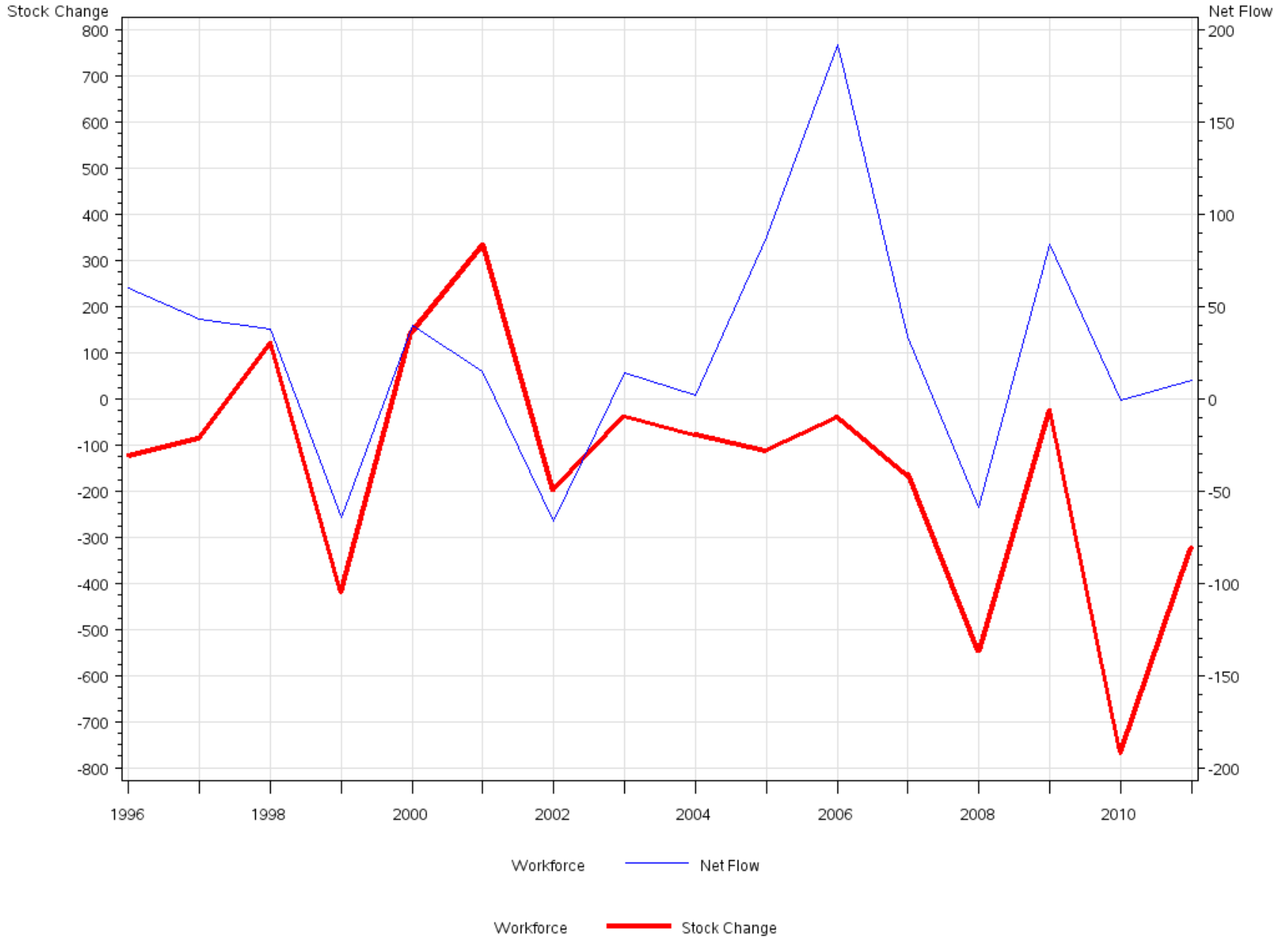
<i>Stock change</i>	<i>Net flow</i>
62 752	0
34 468	10 598
28 284	-10 598

<i>Flows</i>		<b>2010-2011</b>	
		<i>Total</i>	<i>Panel</i>
<b>Total</b>	<b>Total</b>	3 770 261	3 578 855
	<b>Workforce</b>	2 610 127	2 567 939
	<b>Inactive</b>	1 095 807	1 010 916
	<b>Not panel</b>	64 327	
<b>Workforce</b>	<b>Total</b>	2 575 659	2 557 341
	<b>Workforce</b>	2 375 765	2 375 765
	<b>Inactive</b>	181 576	181 576
	<b>Not panel</b>	18 318	
<b>Inactive</b>	<b>Total</b>	1 067 523	1 021 514
	<b>Workforce</b>	192 174	192 174
	<b>Inactive</b>	829 340	829 340
	<b>Not panel</b>	46 009	
<b>Not panel</b>	<b>Total</b>	127 079	
	<b>Workforce</b>	42 188	
	<b>Inactive</b>	84 891	

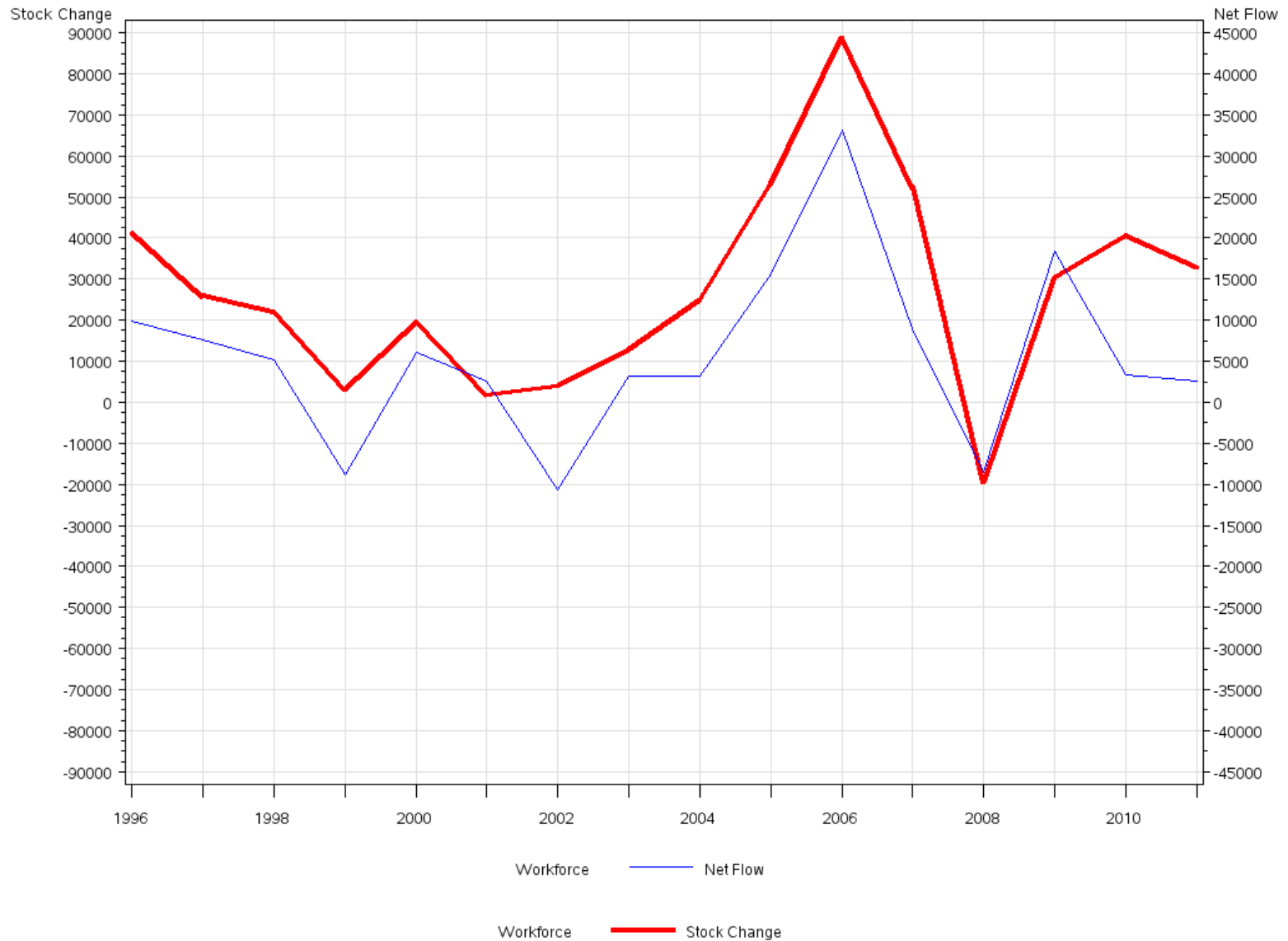
# Comparing workforce changes, register data



# Comparing workforce changes, survey sample



# Comparing workforce changes, survey estimates



## **Lessons learnt:**

- Use auxiliary data
- Sort out population changes
- Present reconciliation tables

## **Unfinished business:**

- Nonresponse errors
- Measurement errors
- Estimation and publication

