



**eurostat**  
Compact guides

**The Census Hub:  
easy and flexible access  
to European census data**



EUROPEAN  
STATISTICAL  
SYSTEM

**eurostat** 

## Know more about your area

Do you need to find out more about the population and housing of your city, region or country?

- How many single parent families are there in your area? How many of these are led by a lone father?
- How many elderly residents in your area were born abroad? When did they arrive in the country?
- What proportion of dwellings in your area is over 50 years old? How many of these are unoccupied?
- How does your area compare with other parts of Europe?

There is now an easy and flexible way to get the detailed information that you need.

## The Census: comparable and reliable information for Europe

The 2011 Census Programme is a major project of the European Statistical System (ESS) to provide high-quality, detailed and comparable data on the size and characteristics of the population and the housing stock of Europe. The census is a huge and uniquely rich source of data, providing information that is of use to students, researchers, analysts, policy-makers and administrators working in central and local government, academia and in the private sector. Unlike many other statistics, the census can provide information at a detailed geographical level — down to individual municipalities.

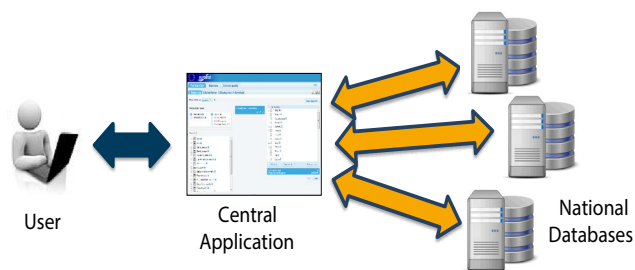
These statistics are based on the national census exercises undertaken in EU Member States and EFTA countries during 2011. The National Statistical Institutes (NSIs) have each prepared pre-defined sets of data and metadata that use harmonised statistical definitions and classifications, which are specified in European statistical legislation. This ensures the comparability and completeness of the statistics. The 2011 European census statistics are the result of extensive planning, close co-operation and consultation between Eurostat and the NSIs. The aim has been to facilitate the widest possible use of the census as a key resource for European social statistics.

# The Census Hub: a new way of disseminating European statistics

The 2011 census data are disseminated in an innovative way designed to maximise the value of these hugely detailed data by offering users great flexibility to define data extractions to meet their needs. Users are not restricted to accessing a small number of pre-defined tables. Instead, they can specify their own cross-tabulations that will be produced from the highly detailed datasets held by the NSIs.

Eurostat has developed an on-line application called the Census Hub to allow users to access these data. The Census Hub is an easy-to-use tool that can quickly produce customised tabulations. The tool allows users to specify the tables that they need, extracts the necessary data from the databases held by the NSIs. Data from the national databases are then compiled by the Census Hub, with output either displayed on screen or in spreadsheet-readable files. This whole process takes just seconds.

## Structure of the Census Hub system

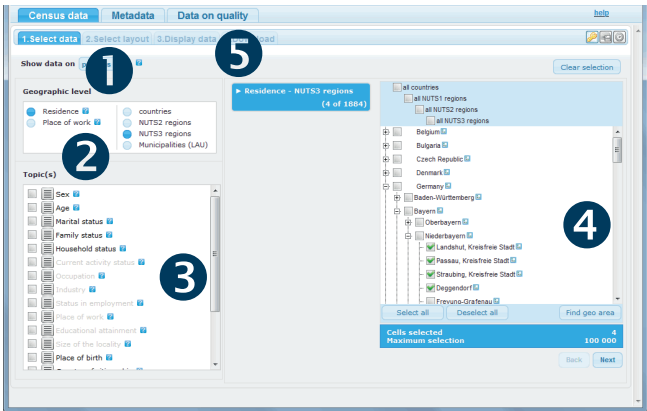


Anyone may use the Census Hub without charge via the internet. It can be accessed from the Eurostat website at:

[http://epp.eurostat.ec.europa.eu/portal/page/portal/population\\_and\\_housing\\_census/introduction](http://epp.eurostat.ec.europa.eu/portal/page/portal/population_and_housing_census/introduction)

# Using the Census Hub

Users specify the exact cross-tabulations that they need in the Census Hub data selection screen as shown below.

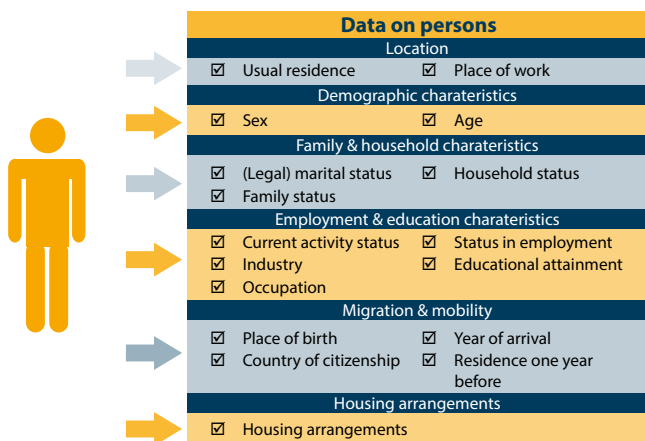


- 1 The user first selects the statistical unit of interest: persons, households, families or dwellings.
- 2 The required level of geographical detail for the outputs is then selected: national level, NUTS2 or NUTS3 regions, or municipalities (LAU2). At this stage, the user also selects whether the output should be based on place of residence or place of work.
- 3 The topics (variables) to be included in the output table are specified.
- 4 For the topics and level of geography selected, different breakdowns can be selected.
- 5 The data selection screen also offers links to detailed metadata and methodological information.

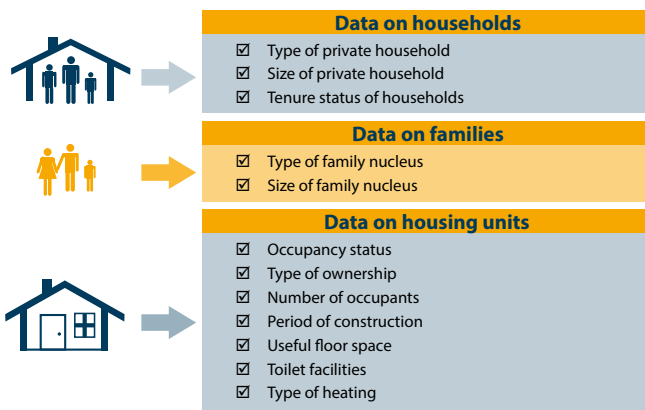
On the following screens, you can choose the layout of the output tables, can see progress made with extracting the data from national databases, visualise the outputs on screen, and select a file format to download the data for further analysis to your spreadsheet application.

# Census topics and tabulations

The widest range of census topics relate to persons.



Other census topics relate to households and families, and to housing:



The Census Hub also gives you access to extensive metadata — explanatory information to help understand the data, including the definitions of the census topics, quality measures and details of the census methodology used in each country.

## Other 2011 Census outputs

Although the Census Hub is the main route for releasing the census data, Eurostat is also developing several other complementary outputs to meet the needs of different users. As with the Census Hub, these will be free to use.

## Accessing the 2011 European Census data

The Census Hub, and all of the other 2011 census statistics products as they become available, together with a large amount of information on the methodological and legal frameworks for this programme, can be accessed via the census pages of the Eurostat website at:

[http://epp.eurostat.ec.europa.eu/portal/page/portal/population\\_and\\_housing\\_census/introduction](http://epp.eurostat.ec.europa.eu/portal/page/portal/population_and_housing_census/introduction)

## Something for everyone

The Census Hub is an easy to use, versatile tool that will meet the needs of many different types of user. It can provide information for:

- analysts in central or local government, businesses and non-governmental organisations who can extract background data for their research;
- researchers or demographers who can benefit from the richness of around one billion figures on population and housing in Europe — some at the level of individual municipalities;
- anyone who just wants to learn more about their country, region or municipality, or about anywhere else in the EU.

You can select and arrange the tables as you need and then ‘cut and paste’ or download the data for use in your reports or studies.

**We invite you to try it!**

