

Business tendency in manufacturing, construction, trade and services – May 2021

Impact of COVID-19 pandemic on business tendency – assessment and expectations (Annex)

21.05.2021

↑ -0.3

General business climate indicator for manufacturing (NSA)

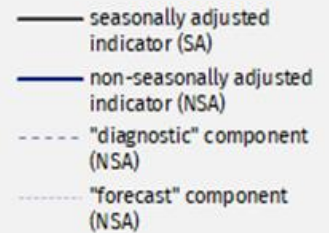
In most of presented kinds of activities general business climate indicator in May is at a higher level than in the previous month. In all of researched areas improvement of “forecast” components have been reported, in most sectors also “diagnostic” ones went up.

The most positive¹ indicator is reported in information and communication section, whereas the most pessimistic one in accommodation and food

service activities, however these entities note the biggest month-to-month improvement.

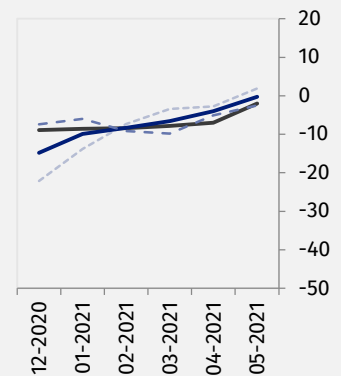
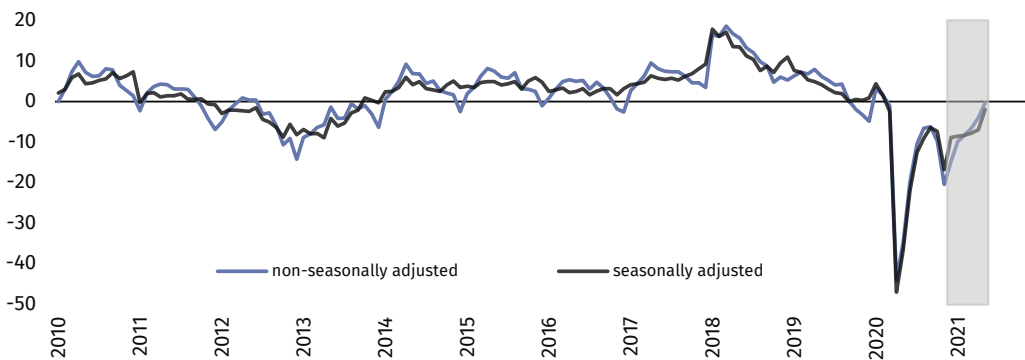
In the current month – answers provided between 1 and 10 May – supplementary set of questions has been added to the survey. This particular set aims to additionally diagnose the impact of COVID-19 pandemic on business tendency (results in Annex).

General business climate indicator and its components in the last six months



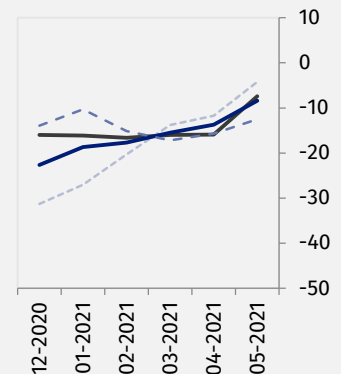
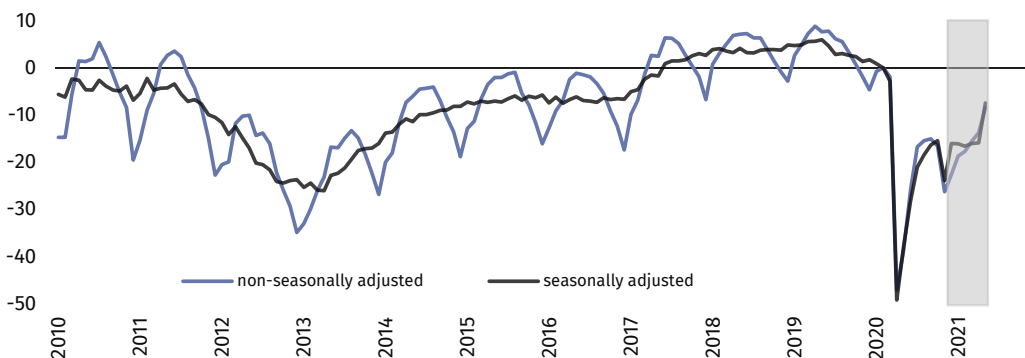
Manufacturing (graph 1)

In the current month general business climate indicator (NSA) takes the value minus 0.3 and it is higher than the one reported in April (minus 4.0).



Construction (graph 2)

In May general business climate indicator (NSA) takes the value minus 8.4 – higher than the one reported in the previous month (minus 13.7).

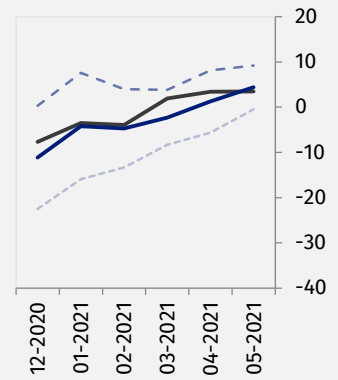
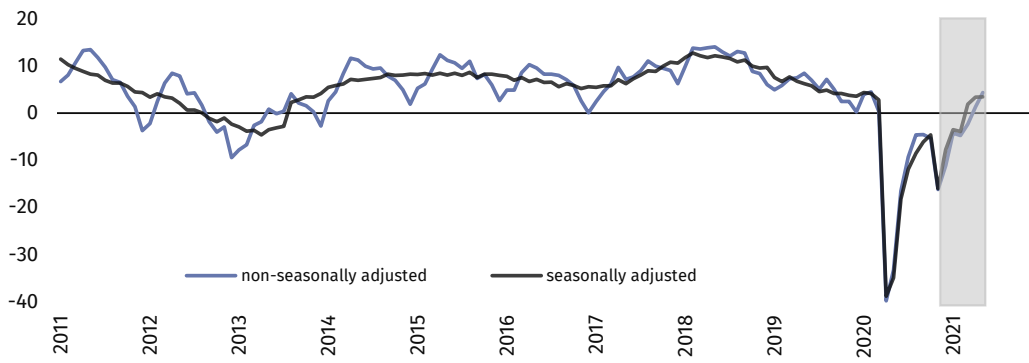


¹ It means that the percentage of entrepreneurs expecting improvement of their entities' economic situation in the next three months outweighs the percentage of entrepreneurs expecting its deterioration.



Wholesale trade (graph 3)

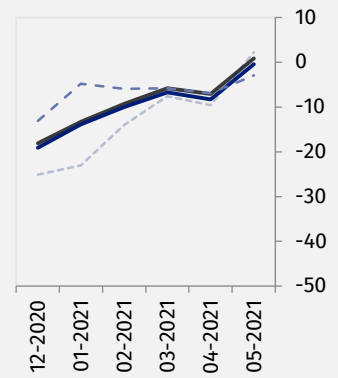
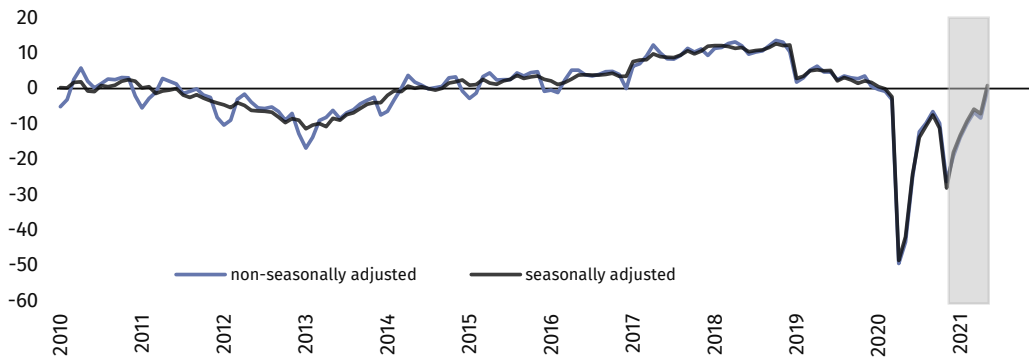
In the current month general business climate indicator (NSA) takes the value plus 4.4 – higher than the one reported in April (plus 1.3).



Retail trade (graph 4)

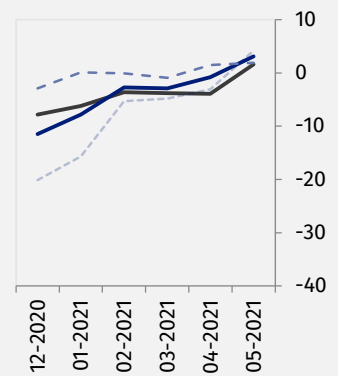
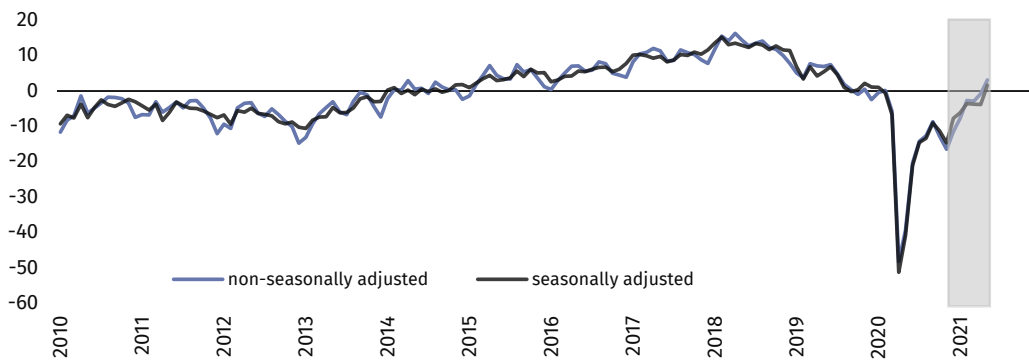


In May general business climate indicator (NSA) takes the value minus 0.4 and it is higher than in April (minus 8.3).



Transportation and storage (graph 5)

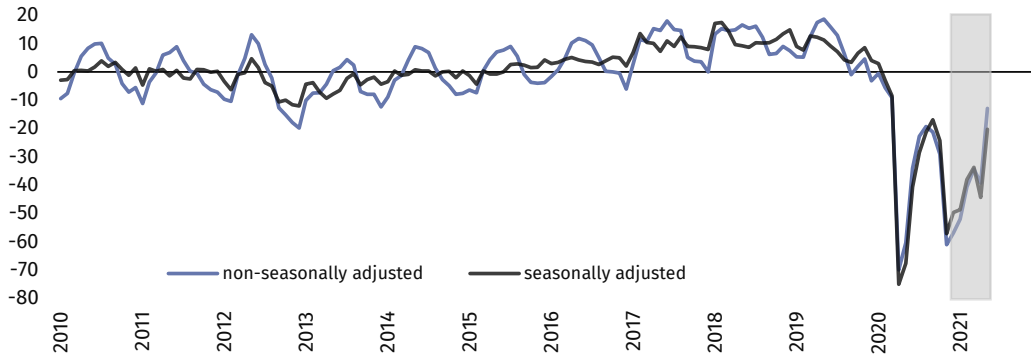
In the current month general business climate indicator (NSA) takes the value plus 3.1 and it is higher than the one reported in April (minus 0.8).



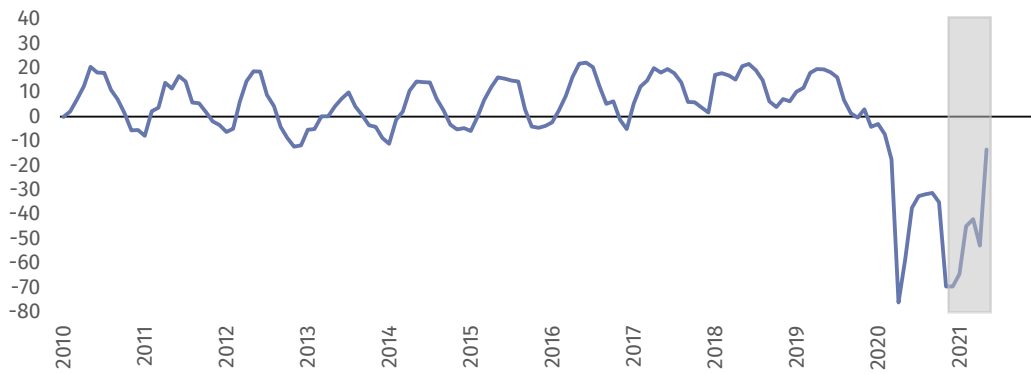
Accommodation and food service activities (graph 6)



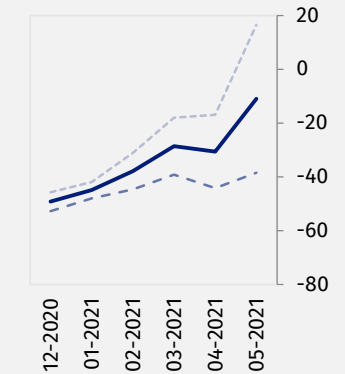
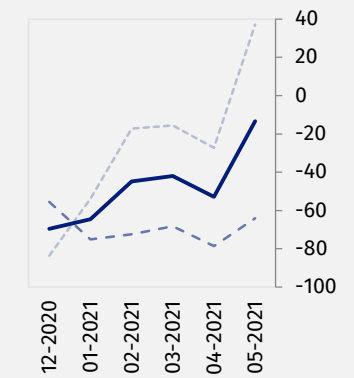
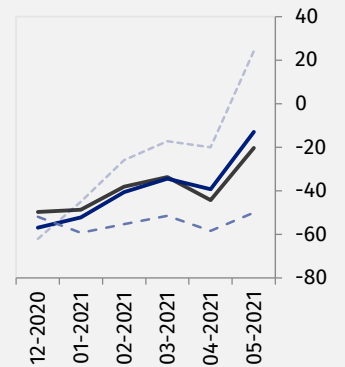
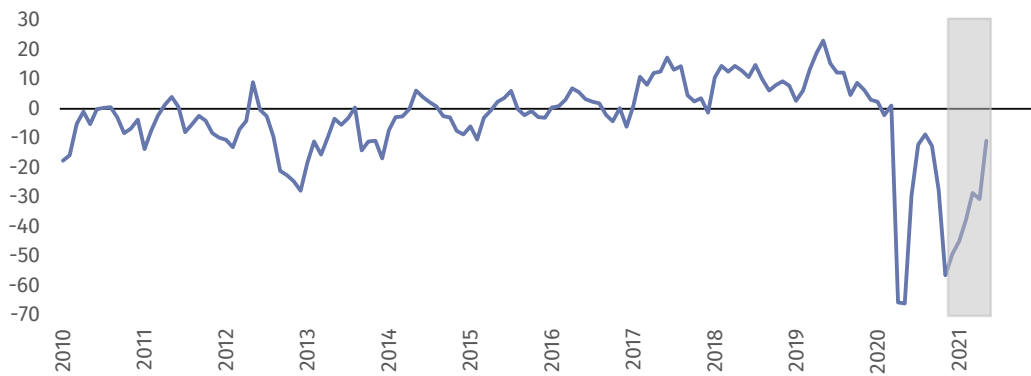
In May general business climate indicator (NSA) takes the value minus 12.9 versus minus 39.2 in April. Entities operating in accommodation assess business tendency more pessimistically (minus 13.4) than the ones of food service activities (minus 10.9).



Accommodation (graph 6a)



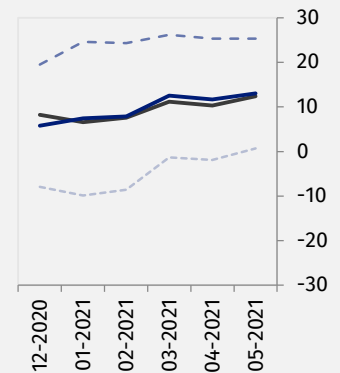
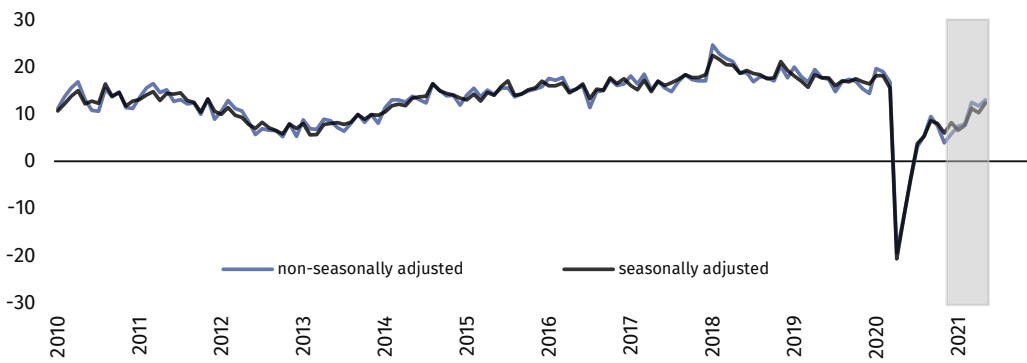
Food service activities (graph 6b)





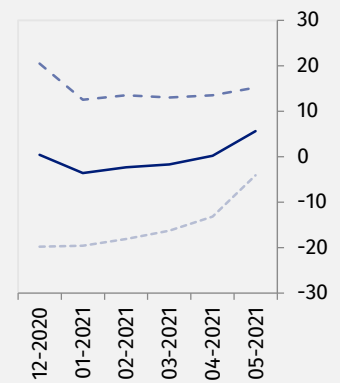
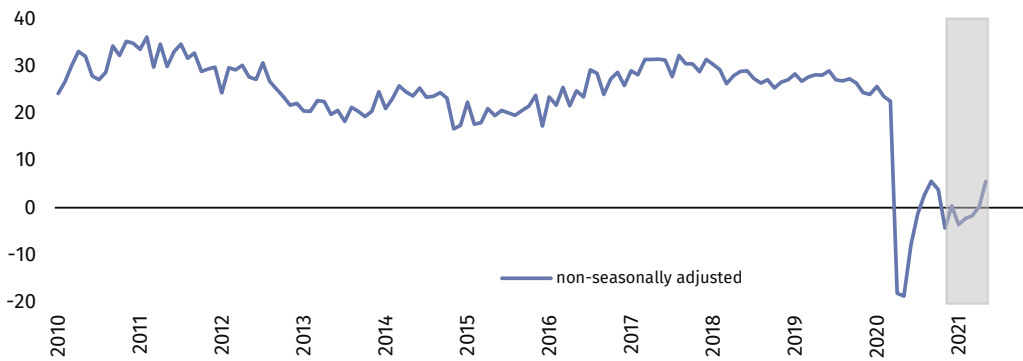
Information and communication (graph 7)

In the current month general business climate indicator (NSA) takes the positive value (plus 13.0) and it is similar to the one reported in April (plus 11.7).











Financial and insurance activities (graph 8)²

In May general business climate indicator (NSA) takes the value plus 5.6 versus plus 0.2 in April.



² Time series does not require to be seasonally adjusted. Non-seasonally adjusted data can be analyzed and interpreted in the same way as seasonally adjusted data.

Table 1. Business climate indicators by kind of activity

	SPECIFICATION	Analogous month of the previous year	Previous month	Current month	Long-term average
Manufacturing 	seasonally adjusted indicator (SA)	-36,7	-7,0	-2,0	2,8
	non-seasonally adjusted indicator (NSA)	-34,9	-4,0	-0,3	2,8
	“diagnostic” component (NSA)	-27,6	-5,1	-2,5	-1,1
	“forecast” component (NSA)	-42,2	-2,8	1,9	6,8
Construction 	seasonally adjusted indicator (SA)	-38,0	-15,9	-7,4	-2,2
	non-seasonally adjusted indicator (NSA)	-38,8	-13,7	-8,4	-2,2
	“diagnostic” component (NSA)	-27,5	-15,7	-12,5	-5,9
	“forecast” component (NSA)	-50,1	-11,7	-4,2	1,4
Wholesale trade 	seasonally adjusted indicator (SA)	-34,9	3,4	3,5	4,2
	non-seasonally adjusted indicator (NSA)	-33,3	1,3	4,4	4,2
	“diagnostic” component (NSA)	-20,6	8,1	9,2	8,9
	“forecast” component (NSA)	-46,0	-5,6	-0,5	-0,7
Retail trade 	seasonally adjusted indicator (SA)	-41,9	-7,1	0,9	-4,2
	non-seasonally adjusted indicator (NSA)	-43,4	-8,3	-0,4	-4,2
	“diagnostic” component (NSA)	-34,7	-6,9	-2,9	-3,8
	“forecast” component (NSA)	-52,0	-9,6	2,2	-4,5
Transportation and storage 	seasonally adjusted indicator (SA)	-40,9	-3,9	1,6	-0,3
	non-seasonally adjusted indicator (NSA)	-39,4	-0,8	3,1	-0,3
	“diagnostic” component (NSA)	-28,3	1,5	1,9	0,4
	“forecast” component (NSA)	-50,4	-3,1	4,2	-1,1
Accommodation and food service activities 	seasonally adjusted indicator (SA)	-67,7	-44,3	-20,2	0,3
	non-seasonally adjusted indicator (NSA)	-60,4	-39,2	-12,9	0,3
	“diagnostic” component (NSA)	-71,7	-58,4	-50,0	-1,8
	“forecast” component (NSA)	-49,0	-20,0	24,3	2,4
Information and communication 	seasonally adjusted indicator (SA)	-12,3	10,3	12,4	18,8
	non-seasonally adjusted indicator (NSA)	-12,0	11,7	13,0	18,9
	“diagnostic” component (NSA)	9,2	25,3	25,3	25,9
	“forecast” component (NSA)	-33,2	-1,9	0,7	11,8
Financial and insurance activities 	seasonally adjusted indicator (SA) ³
	non-seasonally adjusted indicator (NSA)	-18,8	0,2	5,6	27,2
	“diagnostic” component (NSA)	18,0	13,5	15,2	33,5
	“forecast” component (NSA)	-55,6	-13,2	-4,1	20,9

³ Time series does not require to be seasonally adjusted. Non-seasonally adjusted data can be analyzed and interpreted in the same way as seasonally adjusted data.






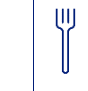
Annex

Impact of COVID-19 pandemic on business tendency

– assessments and expectations

Survey was conducted between 1 and 10 May 2021 on a sample of entities operating in manufacturing, construction, trade as well as services. As opposed to regular part of surveys, answers to additional set of questions were provided voluntarily. In questions 1, 4 and 5 percent of respondents' answers to a given variant is presented. In other questions it is average of values given. Data were aggregated according to methodology of aggregation (weighing) which is used by default in regular survey.

Table 2. Survey data on impact of COVID-19 pandemic on business tendency

Questions	 Manufacturing	 Construction	 Wholesale trade	 Retail trade	 Transportation and storage	 Accommodation and food service activities
1. Negative effects of coronavirus pandemic and its impact on your business activity in the current month will be:						
lack of negative effects	6,6	13,9	8,6	6,9	3,8	1,7
minor	67,4	63,9	69,4	50,0	58,7	4,9
serious	22,4	14,0	17,6	31,8	24,3	65,0
a threat to company's stability	3,6	8,2	4,4	11,3	13,2	28,4
sum (lack of negative effects + minor)	74,0	77,8	78,0	56,9	62,5	6,6
sum (serious + a threat to company's stability)	26,0	22,2	22,0	43,1	37,5	93,4
2. Please, estimate what is the percentage of your employees (regardless of type of contract: employment contract, civil law agreement, self-employed, interns, agents etc.) who will be affected in the current month by each of the following situations:						
remote work and similar forms of work	8,9	6,1	24,0	12,3	15,2	7,1
unplanned absence due to holidays, childcare, looking after family member etc.	4,0	4,6	5,0	4,9	5,1	10,6
absence of employees resulting from quarantine or other restrictions	2,9	4,2	3,1	5,0	3,1	5,7
3. What will be in the current month an estimated change (in percentage) in orders placed by customers on your company's semi-finished products, raw materials, goods or services etc.? Regardless of the reason for change and in comparison to the situation when there was no pandemic:						
change [%]	-3,4	-6,5	-2,7	-4,3	-7,0	-5,7
4. If the current measures as well as restrictions taken by Polish public authorities (but also the ones resulting from actions of other countries, e.g. in the field of border traffic) to combat coronavirus functioning at the time of filling in the questionnaire persisted for a prolonged period, how many months could your enterprise survive?						
less than a month	1,3	3,2	0,8	1,3	1,5	1,7
circa 1 month	5,0	8,9	3,4	2,7	7,3	12,8
2 – 3 months	19,8	22,3	15,1	14,8	22,8	37,9
4 – 6 months	19,3	22,7	20,3	30,7	16,1	31,6
more than 6 months	54,6	42,9	60,4	50,5	52,3	16,0
5. Is your company expecting in the current month the occurrence of payment gridlocks or their increase? Regardless of the cause of gridlocks and in comparison to the situation when there was no pandemic:						
yes, minor	24,9	31,8	43,3	33,4	26,9	22,7
yes, serious	4,5	8,2	6,9	7,2	8,3	25,1
yes, threatening company's stability	1,2	2,7	1,6	4,7	2,9	2,0
we do not expect any	69,4	57,3	48,2	54,7	61,9	50,2
6. What will be in the current month an estimated change (in percentage) in level of employment in your company, with reference to the previous month?						
change [%]	0,1	-0,4	-0,3	-0,2	-0,4	4,8

In the case of quoting data from the Statistics Poland, please provide information: "Statistics Poland data source", and in the case of publishing calculations made on data published by the Statistics Poland, please provide information: "Own study based on Statistics Poland data".

Prepared by:
Macroeconomic Studies and Finance Statistics Department
Director Mirosław Błażej
Office: tel. (+48 22) 608 37 73

Issued by:
The Spokesperson for the President of Statistics Poland
Karolina Banaszek
Mobile: (+48) 695 255 011

Press Office

Office: tel. (+48 22) 608 34 91, 608 38 04

e-mail: obslugaprasowa@stat.gov.pl



www.stat.gov.pl/en/



@StatPoland



@GlownyUrzadStatystyczny

Related information

[Business tendency in manufacturing, construction, trade and services](#)

Data available in databases

[Knowledge Database Business Tendency](#)

[Macroeconomic Data Bank](#)

Terms used in official statistics

[Business tendency](#)



This document was prepared with European Commission financial contribution. Ideas presented here are Statistics Poland notions, so they should not be seen in any cases as European Commission official opinions reflections.