

# Business tendency in manufacturing, construction, trade and services – January 2020

22.01.2020

General business climate indicator and its components in the last six months

**↑ 3,2**

General business climate indicator for manufacturing (NSA)

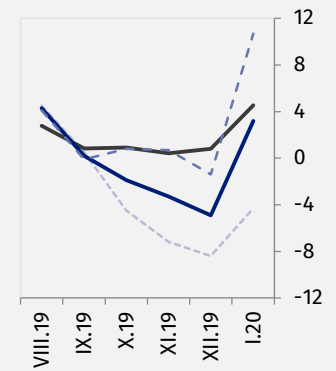
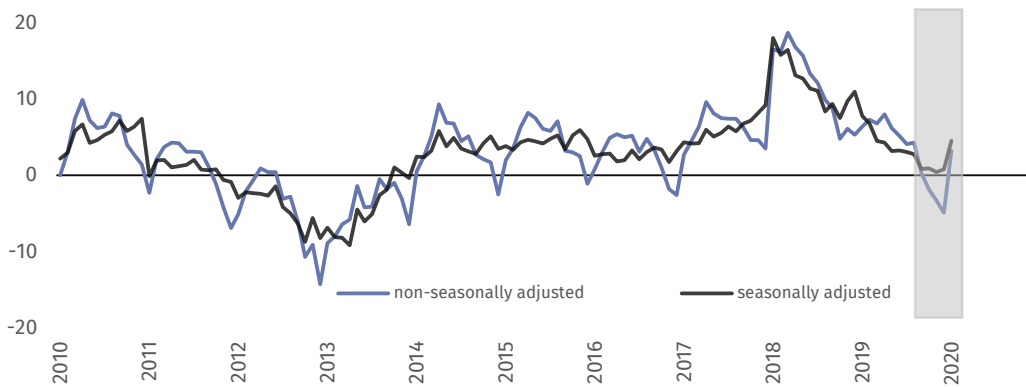
Entrepreneurs from majority of scrutinised kinds of activities claim that general business climate indicator (NSA) is better than in December. Only entities operating in the filed of retail trade assess it as slightly worse than last month.

- seasonally adjusted indicator (SA)
- non-seasonally adjusted indicator (NSA)
- - - "diagnostic" component (NSA)
- - - "forecast" component (NSA)



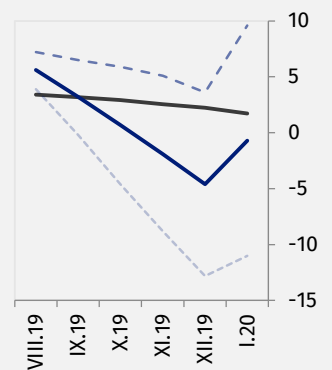
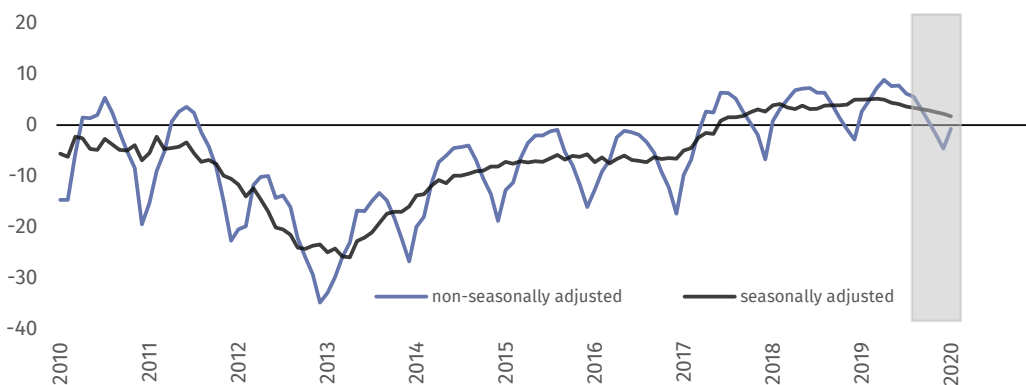
## Manufacturing – general business climate indicator (graph 1)

In January general business climate indicator (NSA) takes the value plus 3.2 and it is higher than in December (minus 4.9) but worse than in January of the last two years.



## Construction – general business climate indicator (graph 2)

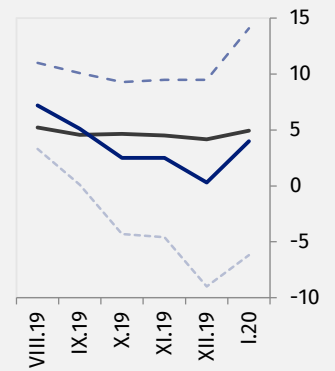
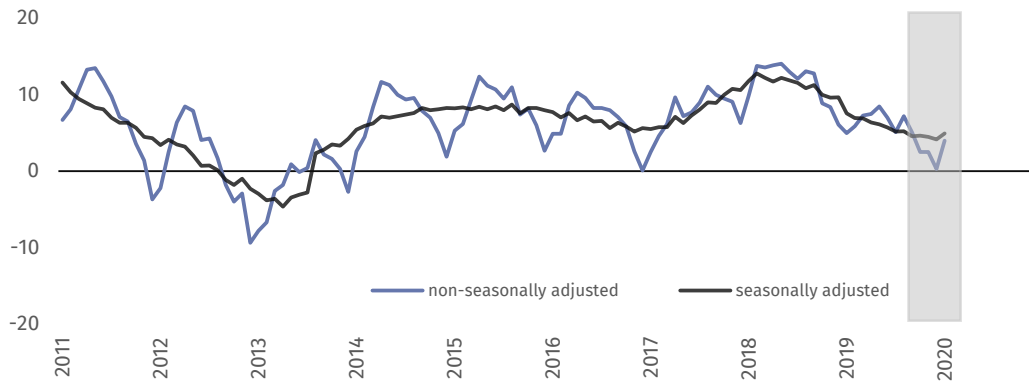
In the current month general business climate indicator (NSA) takes the value minus 0.7 that is higher than in December (minus 4.6) but lower than in January of the last two years.





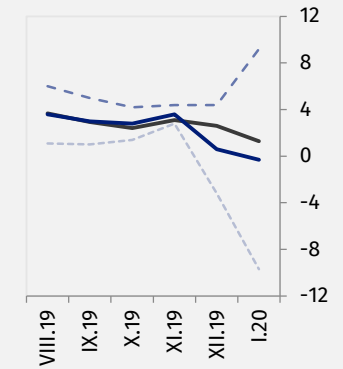
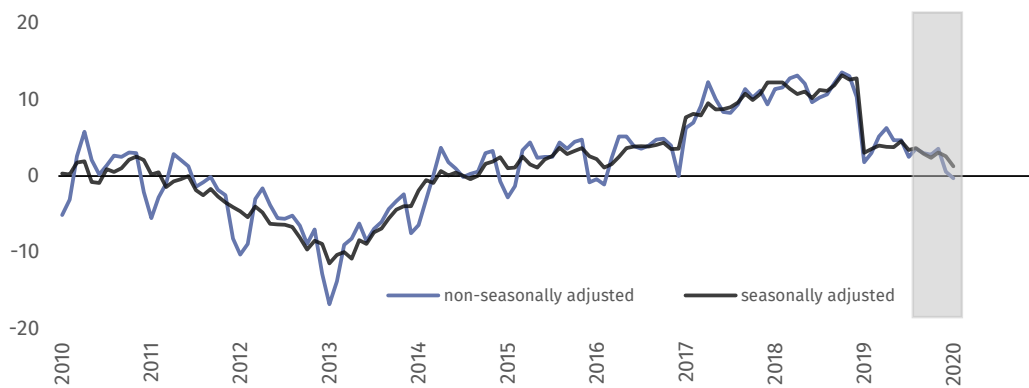
### Wholesale trade – general business climate indicator (graph 3)

In January general business climate indicator (NSA) takes the value plus 4.0, higher than in last three months and on similar level as it was reported in analogous month of 2019.



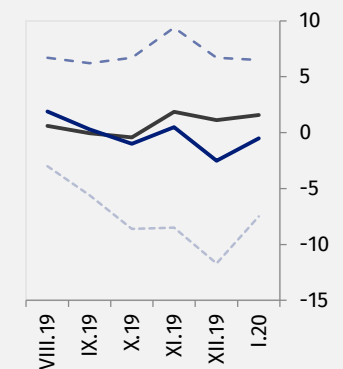
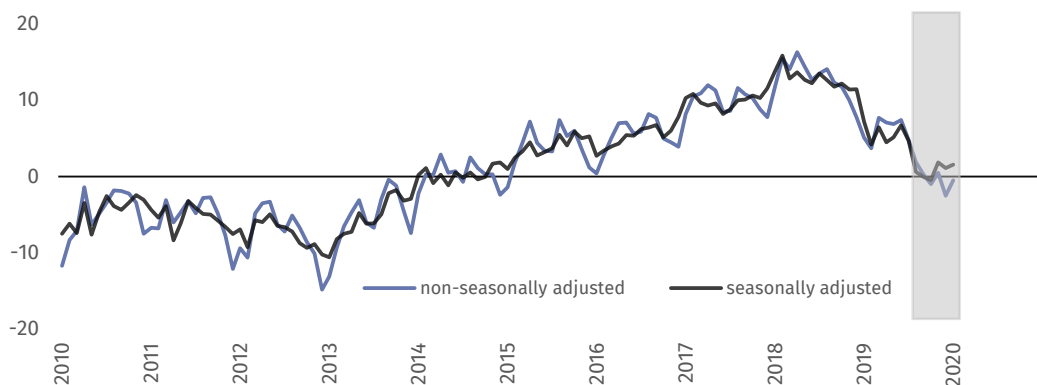
### Retail trade – general business climate indicator (graph 4)

In the current month general business climate indicator (NSA) takes the value minus 0.3, slightly lower than in December (plus 0.6) and also lower than in January of the last three years.



### Transportation and storage – general business climate indicator (graph 5)

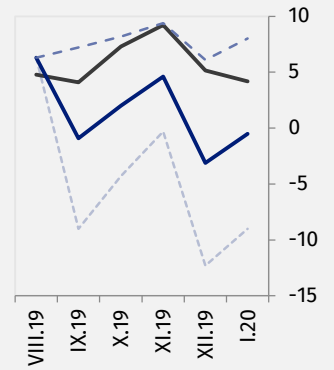
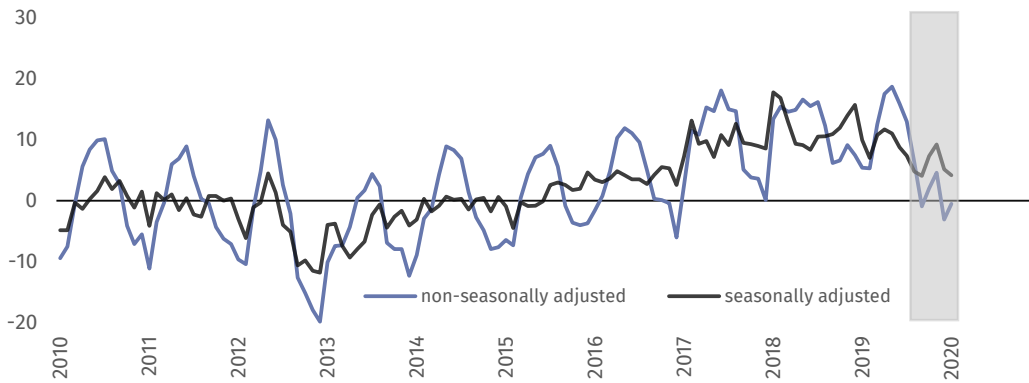
In January general business climate indicator (NSA) takes the value minus 0.5, higher than in December (minus 2.5) but lower than in analogous month of the last four years.





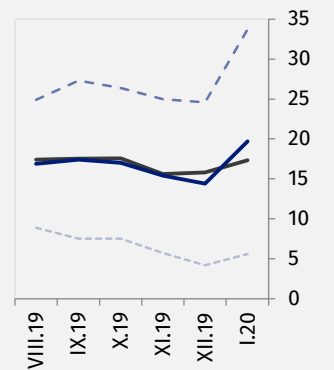
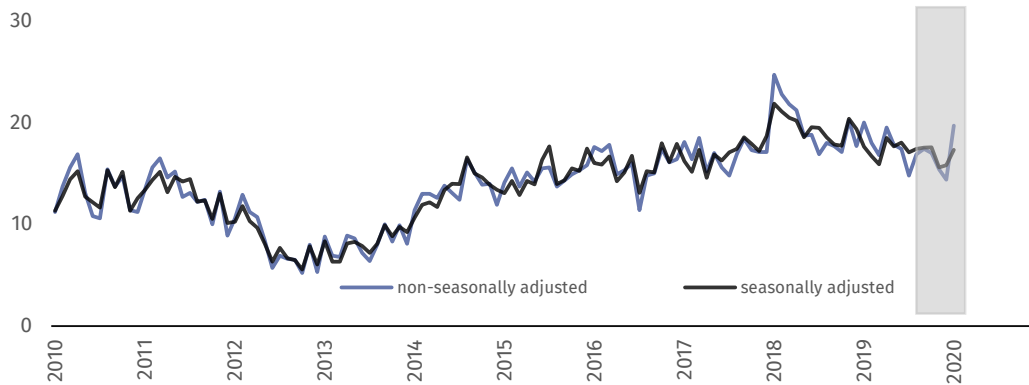
**Accommodation and food service activities – general business climate indicator (graph 6)**

In the current month general business climate indicator (NSA) takes the value minus 0.5 and it is higher than in December (minus 3.1) but lower than in January of the last three years.



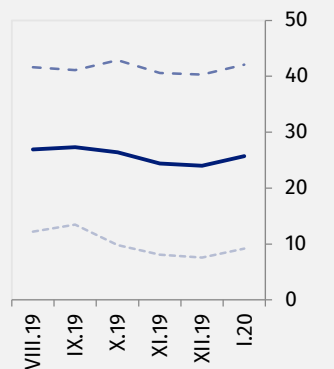
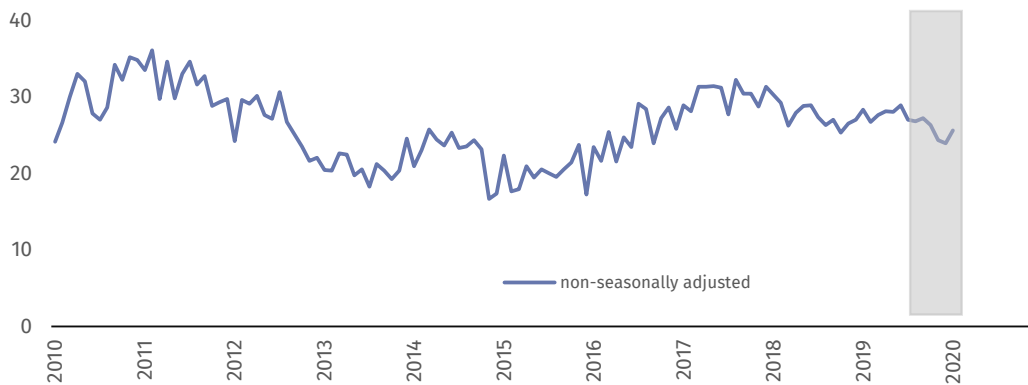
**Information and communication – general business climate indicator (graph 7)**

In January general business climate indicator (NSA) takes the value plus 19.7, lower than in last eight months but similar as it was reported in analogous month of 2019.











**Financial and insurance activities – general business climate indicator (graph 8)<sup>1</sup>**

In the current month general business climate indicator (NSA) takes the value plus 25.7, slightly higher than in two previous months but lower than in analogous month of last three years.



<sup>1</sup> Time series does not require to be seasonally adjusted. Non-seasonally adjusted data can be analyzed and interpreted in the same way as seasonally adjusted data.

Table 1. Business climate indicators by kind of activity

	SPECIFICATION	Analogous month of the previous year	Previous month	Current month	Long-term average
<b>Manufacturing</b> 	seasonally adjusted indicator (SA)	7,8	0,8	<b>4,5</b>	3,9
	non-seasonally adjusted indicator (NSA)	6,4	-4,9	<b>3,2</b>	3,9
	“diagnostic” component (NSA)	11,8	-1,4	<b>10,7</b>	-0,6
	“forecasting” component (NSA)	1,0	-8,4	<b>-4,3</b>	8,3
<b>Construction</b> 	seasonally adjusted indicator (SA)	5,0	2,2	<b>1,7</b>	-1,1
	non-seasonally adjusted indicator (NSA)	2,7	-4,6	<b>-0,7</b>	-1,1
	“diagnostic” component (NSA)	10,4	3,6	<b>9,6</b>	-5,4
	“forecasting” component (NSA)	-5,0	-12,8	<b>-11,0</b>	3,1
<b>Wholesale trade</b> 	seasonally adjusted indicator (SA)	7,6	4,2	<b>4,9</b>	6,1
	non-seasonally adjusted indicator (NSA)	5,0	0,3	<b>4,0</b>	6,1
	“diagnostic” component (NSA)	13,4	9,5	<b>14,1</b>	10,2
	“forecasting” component (NSA)	-3,5	-9,0	<b>-6,2</b>	1,9
<b>Retail trade</b> 	seasonally adjusted indicator (SA)	3,0	2,6	<b>1,3</b>	-3,4
	non-seasonally adjusted indicator (NSA)	1,8	0,6	<b>-0,3</b>	-3,4
	“diagnostic” component (NSA)	11,0	4,4	<b>9,2</b>	-3,4
	“forecasting” component (NSA)	-7,4	-3,2	<b>-9,7</b>	-3,5
<b>Transportation and storage</b> 	seasonally adjusted indicator (SA)	7,2	1,1	<b>1,6</b>	0,7
	non-seasonally adjusted indicator (NSA)	5,1	-2,5	<b>-0,5</b>	0,6
	“diagnostic” component (NSA)	13,5	6,7	<b>6,5</b>	1,0
	“forecasting” component (NSA)	-3,3	-11,7	<b>-7,5</b>	0,2
<b>Accommodation and food service activities</b> 	seasonally adjusted indicator (SA)	9,9	5,1	<b>4,2</b>	3,1
	non-seasonally adjusted indicator (NSA)	5,4	-3,1	<b>-0,5</b>	3,1
	“diagnostic” component (NSA)	9,7	6,1	<b>8,0</b>	1,3
	“forecasting” component (NSA)	1,1	-12,3	<b>-9,0</b>	4,9
<b>Information and communication</b> 	seasonally adjusted indicator (SA)	17,6	15,8	<b>17,3</b>	19,9
	non-seasonally adjusted indicator (NSA)	20,0	14,4	<b>19,7</b>	19,9
	“diagnostic” component (NSA)	33,1	24,6	<b>33,7</b>	26,3
	“forecasting” component (NSA)	6,8	4,2	<b>5,6</b>	13,5
<b>Financial and insurance activities</b> 	seasonally adjusted indicator (SA) <sup>2</sup>	.	.	.	.
	non-seasonally adjusted indicator (NSA)	28,4	24,0	<b>25,7</b>	29,3
	“diagnostic” component (NSA)	43,0	40,3	<b>42,1</b>	34,5
	“forecasting” component (NSA)	13,7	7,6	<b>9,2</b>	24,1

<sup>2</sup> Time series does not require to be seasonally adjusted. Non-seasonally adjusted data can be analyzed and interpreted in the same way as seasonally adjusted data.

Prepared by:  
**Macroeconomic Studies and Finance  
Statistics Department**  
**Director Mirosław Błazej**  
Office: tel. (+48 22) 608 37 73

Issued by:  
**The Spokesperson for the President  
of Statistics Poland**  
**Karolina Banaszek**  
Mobile: (+48) 695 255 011

#### Press Office

Office: tel. (+48 22) 608 34 91, 608 38 04

e-mail: [obslugaprasowa@stat.gov.pl](mailto:obslugaprasowa@stat.gov.pl)



[www.stat.gov.pl/en/](http://www.stat.gov.pl/en/)



@StatPoland



@GlownyUrzadStatystyczny

#### Related information

[Business tendency in manufacturing, construction, trade and services](#)

#### Data available in databases

[Knowledge Database Business Tendency](#)

[Macroeconomic Data Bank](#)

#### Terms used in official statistics

[Business tendency](#)



*This document was prepared with European Commission financial contribution. Ideas presented here are Statistics Poland notions, so they should not be seen in any cases as European Commission official opinions reflections.*

