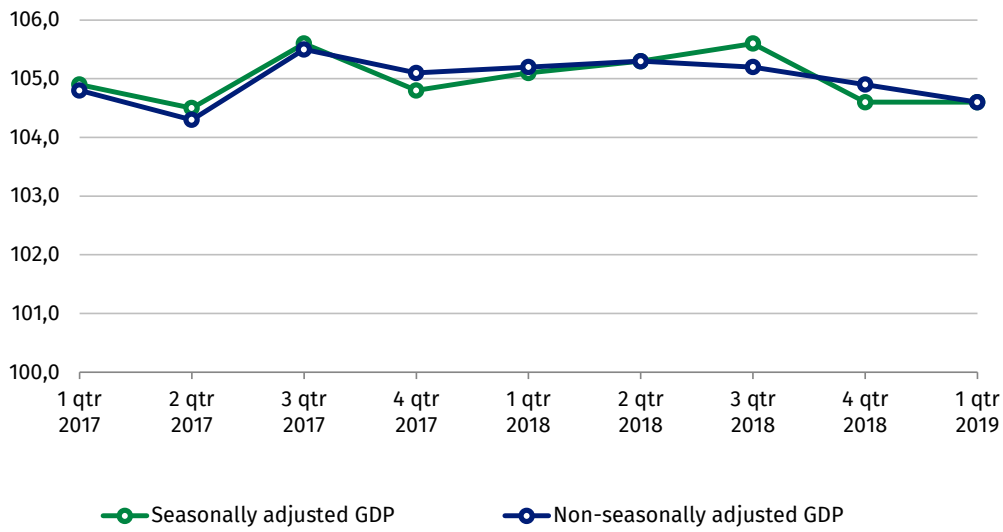
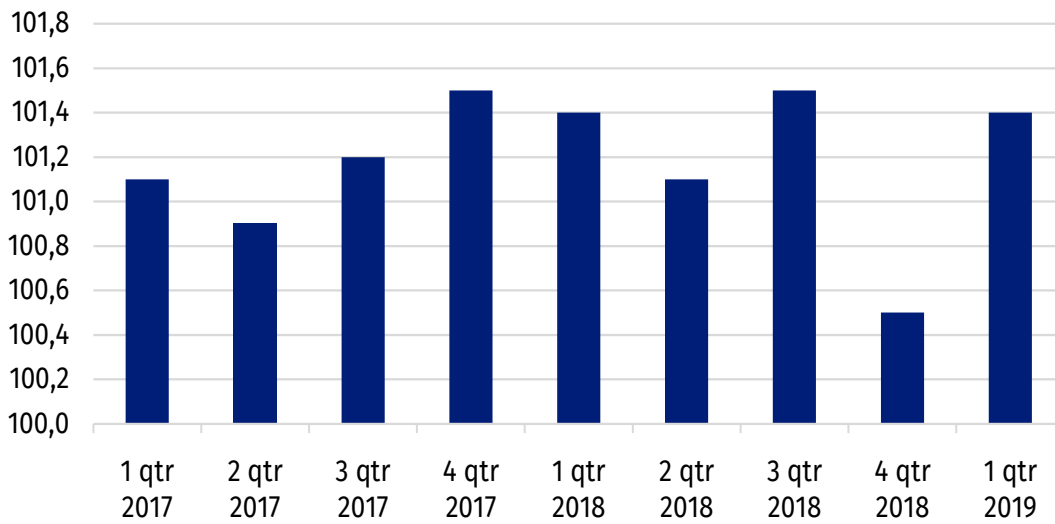


**Chart 1. Gross domestic product volume growth rate.
corresponding period of the previous year = 100**



**Chart 2. Gross domestic product. seasonally adjusted volume growth rate.
the previous quarter = 100**



Prepared by:

**National Accounts Department
Irmina Cerling**

Tel: +48 22 608 38 32

e-mail: i.cerling@stat.gov.pl

Issued by:

**The Spokesperson for the President
of Statistics Poland**

Karolina Dawidziuk

Tel: +48 22 608 3475, +48 22 608 3009

e-mail: rzecznik@stat.gov.pl

Press Office

Tel.: +48 22 608 34 91, +48 22 608 38 04

e-mail: obslugaprasowa@stat.gov.pl



www.stat.gov.pl/en/



[@StatPoland](https://twitter.com/StatPoland)



[@GlownyUrzadStatystyczny](https://www.facebook.com/GlownyUrzadStatystyczny)

Related information

[The Statistics Poland information on the updated 2017-2018 quarterly GDP estimate](#)

Data available in databases

[Knowledge Databases – National Accounts](#)

Terms used in official statistics

[Gross domestic product](#)

[Gross value added](#)

[Gross capital formation](#)