

Index numbers of construction and assembly production in August 2019^{a)}

23.09.2019


102.7

Index number of construction and assembly production as compared to August 2018

In August 2019 value of construction and assembly production in constant prices increased, both in a monthly and increasing basis, compared to corresponding periods of the previous year.

According to preliminary data, construction and assembly production (in constant prices) carried out domestically by construction enterprises employing more than 9 persons was in August 2019 by 2.7% higher than a year before and by 2.1% lower compared with July this year (against increases accordingly by 20.1% and by 1.6% the year before). In the period January-August 2019 construction and assembly production was by 6.2% higher in comparison to the same period of 2018, which saw an increase of 20.6%.

In comparison to August 2019 an increase in the value of construction and assembly production was recorded

Table 1. Index numbers of construction and assembly production (constant prices)

SPECIFICATION	VIII 2019		I-VIII 2019 ¹
	VII 2019=100	VIII 2018=100	I-VIII 2018=100
CONSTRUCTION	97.9	102.7	106.2
Construction of buildings ^Δ	96.5	105.9	102.6
Civil engineering works ^Δ	99.6	107.7	111.0
Specialised construction activities	95.9	89.7	103.6

^Δ Abbreviated form according to PKD 2007.

¹ Data including final information on production and prices in July and reported data in August.

^{a)} Reported data; they comprise enterprises employing over 9 persons, whose main type of activity is included in the section F "Construction" in accordance with the Polish Classification of Activities (PKD 2007).

In comparison to August 2018 an increase in the value of construction and assembly production was recorded in entities whose basic type of activity was civil engineering (7.7%) and in entities dealing mainly with construction of building (5.9%) whereas decrease was noticed in entities performing specialised construction activities (10.3%).

Compared with July 2019, a decrease in the value of works carried out was noted in all divisions of construction, i.e. in entities performing specialised construction activities - by 4.1%, in entities whose basic type of activity was construction of building - by 3.5% and in those dealing mainly with civil engineering works - by 0.4%.

In the period January-August 2019 the highest increase in the value of construction and assembly production (11.0%) was recorded in entities whose basic type of activity were civil engineering works. Increases were also noted in entities performing specialised construction activities (3.6%) and dealing mainly with construction of building (2.6%).

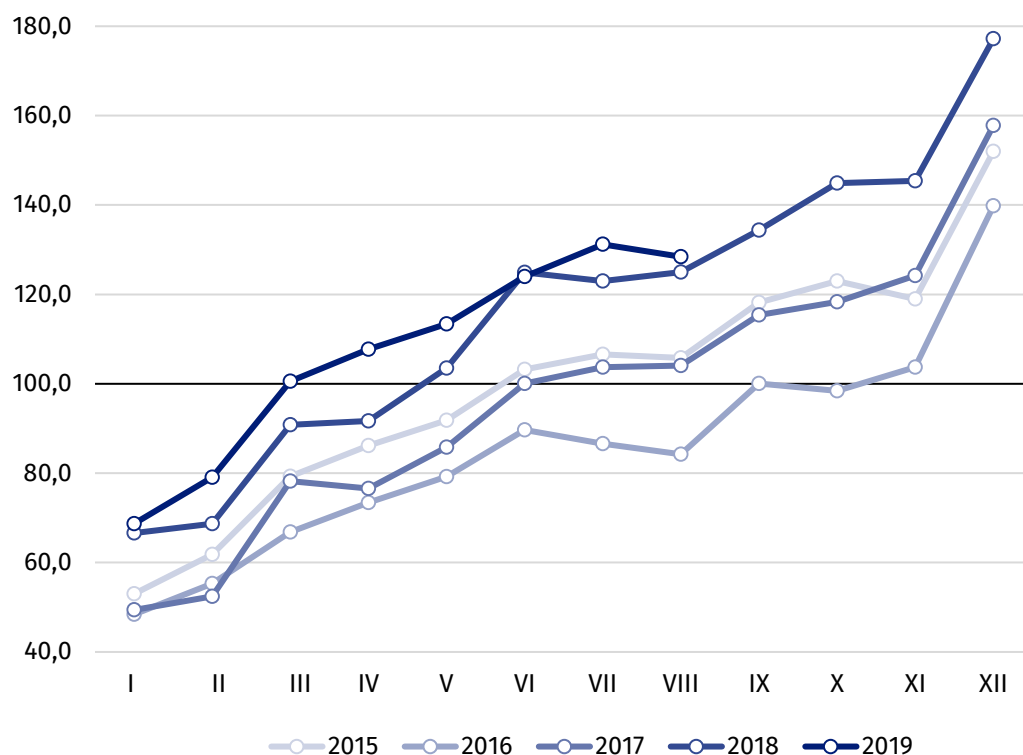
Value of construction and assembly production including investment works in August 2019 was by 5.7% higher than in the corresponding period of 2018 (against an increase by 18.3% the year before), whereas works with a restoration character decreased by 2.1% (against an increase by 22.9% the year before).

In the period January-August 2019 an increase in the value of investment works was by 7.7% higher than in the corresponding period of 2018 and works with a restoration character by 3.6% (against corresponding increases by 18.9% and 23.6% in 2018).

In August this year in comparison to August 2018 an increase in the value of construction and assembly production was noted among entities whose basic type of activity was civil engineering

Value of investment works in the first eight months of 2019 increased by 7.7% y/y

Chart 1. Index numbers of construction and assembly production (constant prices) - average monthly base 2015=100²



² Reported data for August 2019.

Index number of construction and assembly production in August 2019 (in constant prices) compared to the average monthly value of 2015 was 128.4.

After eliminating the seasonal factors, construction and assembly production reached the level by 5.6% higher than in August 2018 and by 2.0% higher in comparison to July 2019.

Prepared by:

Statistical Office in Lublin
Zofia Kurlej

Tel: +48 81 533 23 01

e-mail: Z.Kurlej@stat.gov.pl

Issued by:

The Spokesperson for the President of
Statistics Poland

Karolina Banaszek

Tel: +48 22 608 34 75, +48 22 608 30 09

e-mail: rzecznik@stat.gov.pl

Press Office

Tel: +48 22 608 34 91, +48 22 608 38 04

e-mail: obslugaprasowa@stat.gov.pl



www.stat.gov.pl/en/



[@StatPoland](https://twitter.com/StatPoland)



[@GlownyUrzadStatystyczny](https://www.facebook.com/GlownyUrzadStatystyczny)

Related information

[Statistical Bulletin](#)

[Socio-economic situation of the country](#)

Data available in databases

[Knowledge Database - Construction](#)

[Macroeconomic Data Bank](#)

[Macroeconomic indicators](#)

[Local Data Bank](#)

Terms used in official statistics

[Sale of construction and assembly production](#)

[Seasonally unadjusted index of sale of construction and assembly production in constant prices](#)

[Seasonally adjusted index of sale of construction and assembly production](#)

[Sale of construction works with an investment character](#)

[Sale of construction works with a restoration character and other works](#)