

Index numbers of construction and assembly production in December 2024¹

23.01.2025


92.0

Index number of construction and assembly production compared to December of 2023

According to preliminary data construction and assembly production (in constant prices) carried out domestically by construction enterprises employing more than 9 persons was in December 2024 by 8.0% lower than in the same period of 2023 (an increase of 14.0% in the corresponding period of 2023) and by 30.6% higher compared to November 2024 (an increase of 28.7% in the corresponding period of 2023).

Table 1. Index numbers of construction and assembly production (constant prices)

SPECIFICATION	12 2024		01-12 2024 ²
	11 2024=100	12 2023=100	01-12 2023=100
CONSTRUCTION	130.6	92.0	92.3
Construction of buildings ^Δ	115.5	80.0	92.7
Civil engineering works ^Δ	141.0	99.3	93.3
Specialised construction activities	126.2	90.8	90.2

^Δ Abbreviated form according to PKD 2007.

Construction and assembly production in December 2024, showed an annual decrease in all divisions of construction. For entities dealing mainly with civil engineering works was construction of buildings of 0.7%, performing specialised construction activities it recorded of 9.2% and for whose basic type of activity was construction of buildings of 20.0%.

In 2024 compared to 2023, a decrease of 6.7% in the sales of construction and assembly production was noted in entities dealing mainly with civil engineering works. Decreases of 7.3% and of 9.8% were noted respectively in entities whose basic type of activity was construction of buildings and in entities performing specialised construction activities.

Compared to November 2024, an increase in the sales of construction and assembly production was noted in all divisions of construction, which amounted to 41.0% in entities whose basic type of activity was civil engineering works, in entities performing specialised

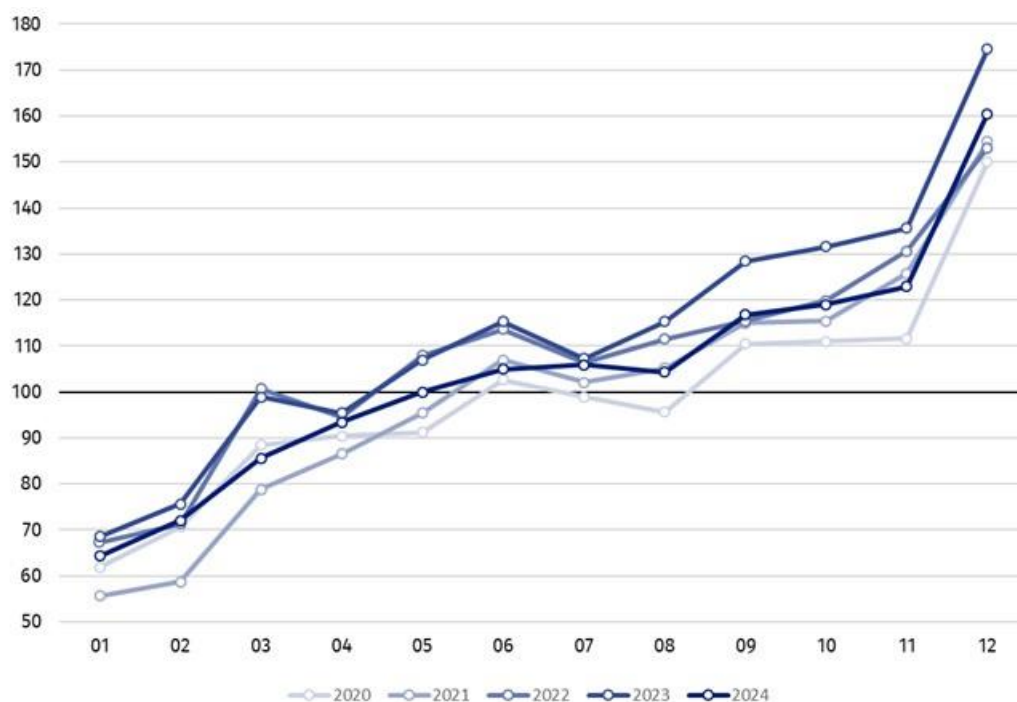
¹ Preliminary data; comprise enterprises employing over 9 persons, whose the main type of activity is included in the section F "Construction" in accordance with the Polish Classification of Activities (PKD 2007).

² Data including final information on production and prices in November and preliminary data in December 2024.

construction activities of 26.2% and in entities dealing mainly with construction of buildings increases were recorded of 15.5%.

Analyzing the value of construction and assembly production in terms of construction works (investment and restoration works) decreases were observed comparing both December and the whole year to the corresponding period of 2023. And so: in December 2024 was noted decrease compared to December 2023 for investment works and for restoration works by 8.0% (in 2023, an increase of 46.5% and a decrease of 25.8% respectively) and compared to whole of 2024 with 2023 a decrease in construction and assembly production was recorded for investment work by 8.3% and the restoration works by 6.1% (in 2023, was observed an increase of 29.8% and a decrease of 28.4%, respectively).

Chart 1. Index numbers of construction and assembly production (constant prices; average monthly base 2021=100)³



Index number of construction and assembly production in December 2024 (in constant prices), compared to the average monthly value of 2021, was 160.5.

In December 2024, after eliminating the seasonal factors, construction and assembly production reached the level by 11.8% lower than in the corresponding month of the previous year and higher by 5.8% in comparison to November 2024.

In case of quoting Statistics Poland data, please provide information: “Source of data: Statistics Poland” and in case of publishing calculations made on data published by Statistics Poland, please include the following disclaimer: “Own study based on figures from Statistics Poland”.

³ Preliminary data for December 2024.

Prepared by:
Statistical Office in Lublin

Director Krzysztof Markowski, Ph.D.

Phone: (+48) 695 255 301

Issued by:
Press Office

Mobile: (+48) 695 255 032

Phone: (+48 22) 608 38 04, (+48 22) 449 41 45,
(+48 22) 608 30 09

e-mail: obslugaprasowa@stat.gov.pl



stat.gov.pl/en/



[@StatPoland](https://twitter.com/StatPoland)



[@GlownyUrzadStatystyczny](https://www.facebook.com/GlownyUrzadStatystyczny)



[gus_stat](https://www.instagram.com/gus_stat)



[glownyurządstatystycznygus](https://www.youtube.com/glownyurządstatystycznygus)



[glownyurządstatystyczny](https://www.linkedin.com/company/glownyurządstatystyczny)

Related information

[Statistical Bulletin](#)

[Socio-economic situation of the country](#)

Data available in databases

[Knowledge Database - Construction](#)

[Macroeconomic Data Bank](#)

[Macroeconomic indicators](#)

[Local Data Bank](#)

Terms used in official statistics

[Sale of construction and assembly production](#)

[Seasonally unadjusted index of sale of construction and assembly production in constant prices](#)

[Seasonally adjusted index of sale of construction and assembly production](#)

[Sale of construction works with an investment character](#)

[Sale of construction works with a restoration character and other works](#)