

# Index numbers of construction and assembly production in September 2024<sup>1</sup>

21.10.2024


**91.0**

Index number of construction and assembly production compared to September of 2023

According to preliminary data construction and assembly production (in constant prices) carried out domestically by construction enterprises employing more than 9 persons was in September 2024 by 9.0% lower than in the same period of 2023 (an increase of 11.3% the year before) and by 12.0% higher compared to August 2024 (an increase of 11.3% in the corresponding period of 2023).

**Table 1. Index numbers of construction and assembly production (constant prices)**

SPECIFICATION	09 2024		01-09 2024 <sup>2</sup>
	08 2024=100	09 2023=100	01-09 2023=100
<b>CONSTRUCTION</b>	<b>112.0</b>	<b>91.0</b>	<b>93.0</b>
Construction of buildings <sup>Δ</sup>	107.3	89.9	97.1
Civil engineering works <sup>Δ</sup>	115.8	91.1	91.9
Specialised construction activities	111.3	92.1	89.9

<sup>Δ</sup> Abbreviated form according to PKD 2007.

Construction and assembly production in September 2024, showed an annual decrease in all divisions of construction. For entities whose basic type of activity was construction of buildings it recorded of 10.1%, for those dealing mainly with civil engineering works of 8.9% and for entities performing specialised construction activities of 7.9%.

In the period of January-September 2024, in relation to the same period of the previous year, a decrease in the sales of construction and assembly production was noted in entities performing specialised construction activities of 10.1%. In entities dealing mainly with civil engineering works and in whose basic type of activity was construction of buildings decreases were noted of 8.1% and of 2.9% respectively.

Compared to August 2024, an increase in the sales of construction and assembly production was noted in entities whose basic type of activity was civil engineering works of 15.8%,

<sup>1</sup> Preliminary data; comprise enterprises employing over 9 persons, whose the main type of activity is included in the section F "Construction" in accordance with the Polish Classification of Activities (PKD 2007).

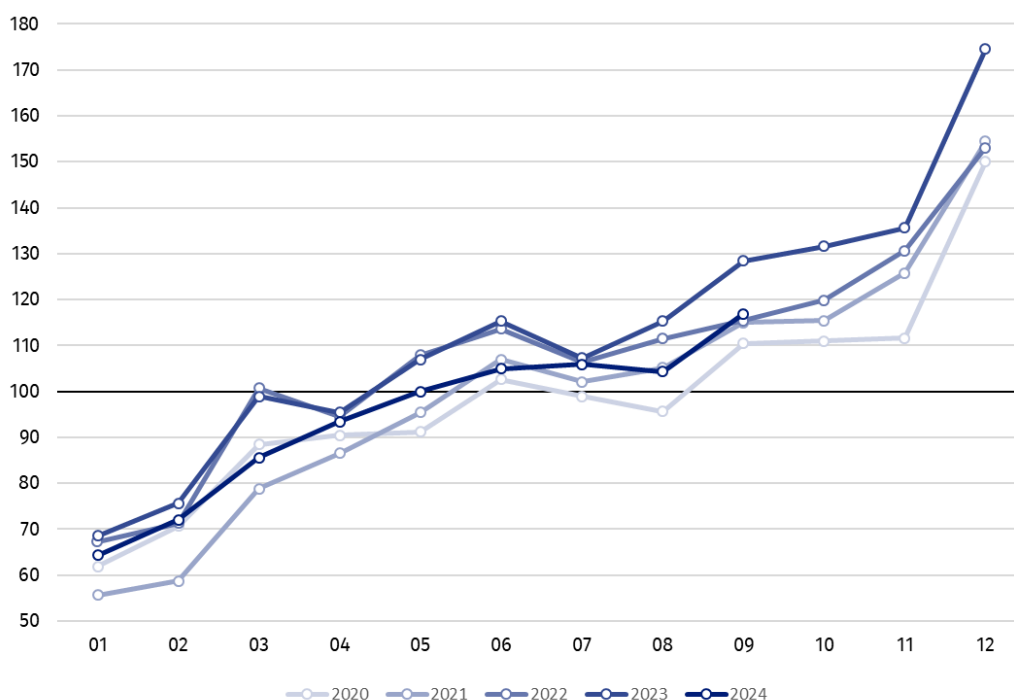
<sup>2</sup> Data including final information on production and prices in August and preliminary data in September.

in entities performing specialised construction activities of 11.3% and in entities dealing mainly with construction of buildings of 7.3%.

A decrease in construction and assembly production in September 2024, compared with the same month of the previous year, was observed for investment works by 12.2% and for restoration works by 1.1% (in 2023, an increase of 36.6% and a decrease of 23.8% respectively).

In the period of January-September 2024, in relation to the corresponding period of 2023, there was a decrease in the investment works by 7.7% and in the restoration works by 5.4%. In the same period of 2023, was observed an increase of 24.9% and a decrease of 28.6%, respectively.

**Chart 1. Index numbers of construction and assembly production (constant prices; average monthly base 2021=100)<sup>3</sup>**



Index number of construction and assembly production in September 2024 (at constant prices), compared to the average monthly value of 2021, was 116.9.

In September 2024, after eliminating the seasonal factors, construction and assembly production reached the level by 9.3% lower than in the corresponding month of the previous year and higher by 0.9% in comparison to August 2024.

In case of quoting Statistics Poland data, please provide information: “Source of data: Statistics Poland” and in case of publishing calculations made on data published by Statistics Poland, please include the following disclaimer: “Own study based on figures from Statistics Poland”.

<sup>3</sup> Preliminary data for September 2024.

Prepared by:  
**Statistical Office in Lublin**

**Director Krzysztof Markowski, Ph.D.**

Phone: (+48) 695 255 301

Issued by:  
**Press Office**

Mobile: (+48) 695 255 032

Phone: (+48 22) 608 38 04, (+48 22) 449 41 45,  
(+48 22) 608 30 09

e-mail: [obslugaprasowa@stat.gov.pl](mailto:obslugaprasowa@stat.gov.pl)



[stat.gov.pl/en/](http://stat.gov.pl/en/)



[@StatPoland](https://twitter.com/StatPoland)



[@GlownyUrzadStatystyczny](https://www.facebook.com/GlownyUrzadStatystyczny)



[gus\\_stat](https://www.instagram.com/gus_stat)



[glownyurządstatystycznygus](https://www.youtube.com/glownyurządstatystyczny)



[glownyurządstatystyczny](https://www.linkedin.com/company/glownyurządstatystyczny)

#### **Related information**

[Statistical Bulletin](#)

[Socio-economic situation of the country](#)

#### **Data available in databases**

[Knowledge Database - Construction](#)

[Macroeconomic Data Bank](#)

[Macroeconomic indicators](#)

[Local Data Bank](#)

#### **Terms used in official statistics**

[Sale of construction and assembly production](#)

[Seasonally unadjusted index of sale of construction and assembly production in constant prices](#)

[Seasonally adjusted index of sale of construction and assembly production](#)

[Sale of construction works with an investment character](#)

[Sale of construction works with a restoration character and other works](#)