

24.04.2023

# Index numbers of construction and assembly production in March 2023 <sup>1</sup>


**98.5**

Index number of construction and assembly production as compared to March of 2022

According to preliminary data construction and assembly production (in constant prices) carried out domestically by construction enterprises employing more than 9 persons was in March 2023 by 1.5% lower than in the same period in 2022 (an increase of 27.6% in the corresponding period of 2022) and by 30.6% higher compared to February 2023 (an increase of 41.4% in the corresponding period of 2022).

**Table 1. Index numbers of construction and assembly production (constant prices)**

SPECIFICATION	03 2023		01-03 2023 <sup>2</sup>
	02 2023=100	03 2022=100	01-03 2022=100
<b>CONSTRUCTION</b>	<b>130.6</b>	<b>98.5</b>	<b>103.5</b>
Construction of buildings <sup>Δ</sup>	125.9	89.5	93.6
Civil engineering works <sup>Δ</sup>	147.1	109.5	113.7
Specialised construction activities	117.8	97.3	105.3

<sup>Δ</sup> Abbreviated form according to PKD 2007.

Construction and assembly production in March 2023, compared to the corresponding period of 2022, increased in entities dealing mainly with civil engineering works (9.5%), whereas the decrease was noted in entities performing specialised construction activities (2.7%) and in entities whose basic type of activity was construction of buildings (10.5%).

Compared to February 2023, the increase was noted in all divisions of construction, in entities whose basic type of activity was civil engineering works of 47.1%, dealing mainly with construction of buildings of 25.9% and performing specialised construction activities of 17.8%.

<sup>1</sup> Reported data; comprise enterprises employing over 9 persons, whose the main type of activity is included in the section F "Construction" in accordance with the Polish Classification of Activities (PKD 2007).

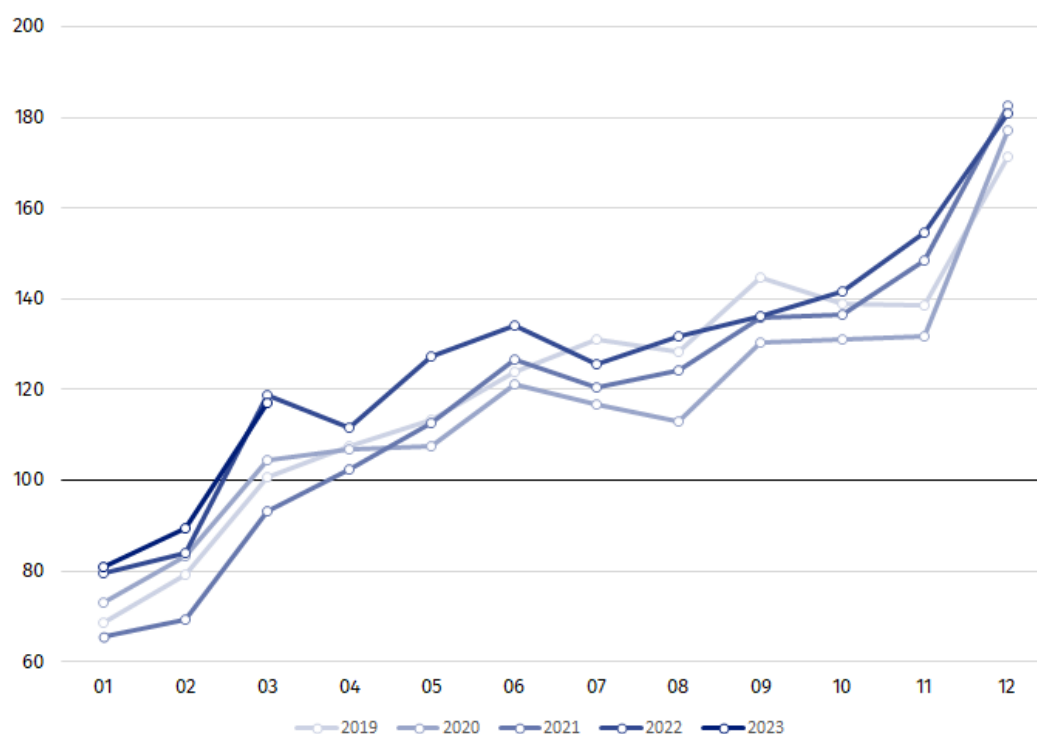
<sup>2</sup> Data including final information on production and prices in February and reported data in March.

In the period of January-March 2023, in relation to the same period of the previous year, an increase in the sales of construction and assembly production was noted in entities dealing mainly with civil engineering works (13.7%) and performing specialised construction activities (5.3%), whereas a decrease was recorded in entities whose basic type of activity was construction of buildings (6.4%).

Construction and assembly production in March 2023, compared to corresponding month of 2022, increased for investment works by 1.8% and decreased for restoration works by 5.8% (increases of 16.8% and 44.9% in 2022).

In the period of January-March 2023, in relation to the corresponding period of 2022, there was an increase of 8.5% in the investment works (an increase of 16.5% in 2022) and a decrease of 3.3% in the works with a restoration character (an increase of 34.1% in 2022).

**Chart 1. Index numbers of construction and assembly production (constant prices; average monthly base 2015=100)<sup>3</sup>**



Index number of construction and assembly production in March 2023 (in constant prices), compared to the average monthly value of 2015, was 117.0.

In March 2023, after eliminating the seasonal factors, construction and assembly production reached the level by 1.4% lower than in the corresponding month of the previous year and by 2.0% lower in comparison to February 2023.

In case of quoting Statistics Poland data, please provide information: “Source of data: Statistics Poland” and in case of publishing calculations made on data published by Statistics Poland, please include the following disclaimer: “Own study based on figures from Statistics Poland”.

<sup>3</sup> Reported data for March 2023.

Prepared by:  
**Statistical Office in Lublin**

**Director Krzysztof Markowski**

Phone: (+48) 695 255 301

Issued by:  
**The Spokesperson for the President of Statistics  
Poland**

**Karolina Banaszek**

Phone: (+48) 695 255 011

**Press Office**

Phone: (+48 22) 608 38 04

**e-mail: [obslugaprasowa@stat.gov.pl](mailto:obslugaprasowa@stat.gov.pl)**



[www.stat.gov.pl/en/](http://www.stat.gov.pl/en/)



[@StatPoland](https://twitter.com/StatPoland)



[@GlownyUrzadStatystyczny](https://www.facebook.com/GlownyUrzadStatystyczny)



[gus\\_stat](https://www.instagram.com/gus_stat)



[glownyurządstatystycznygus](https://www.youtube.com/glownyurządstatystycznygus)



[glownyurządstatystyczny](https://www.linkedin.com/company/glownyurządstatystyczny)

**Related information**

[Statistical Bulletin](#)

[Socio-economic situation of the country](#)

**Data available in databases**

[Knowledge Database - Construction](#)

[Macroeconomic Data Bank](#)

[Macroeconomic indicators](#)

[Local Data Bank](#)

**Terms used in official statistics**

[Sale of construction and assembly production](#)

[Seasonally unadjusted index of sale of construction and assembly production in constant prices](#)

[Seasonally adjusted index of sale of construction and assembly production](#)

[Sale of construction works with an investment character](#)

[Sale of construction works with a restoration character and other works](#)