

21.09.2022

# Index numbers of construction and assembly production in August 2022 <sup>1</sup>

 **106.1**

Index number of construction and assembly production as compared to August of 2021

According to preliminary data construction and assembly production (in constant prices) carried out domestically by construction enterprises employing more than 9 persons was in August 2022 by 6.1% higher than a year before (an increase of 10.2% the year before) and by 5.1% higher compared with July 2022 (an increase of 3.2% the year before).

**Table 1. Index numbers of construction and assembly production (constant prices)**

SPECIFICATION	08 2022		01-08 2022 <sup>2</sup>
	07 2022=100	08 2021=100	01-08 2021=100
<b>CONSTRUCTION</b>	<b>105.1</b>	<b>106.1</b>	<b>110.1</b>
Construction of buildings <sup>Δ</sup>	101.4	125.7	122.9
Civil engineering works <sup>Δ</sup>	108.9	98.4	103.7
Specialised construction activities	104.2	98.7	105.0

<sup>Δ</sup>Abbreviated form according PKD 2007.

Sales of construction and assembly production in August 2022, compared to the corresponding period of 2021, increased in entities dealing mainly with construction of buildings (25.7%), whereas decreases were noted in performing specialised construction activities (1.3%) and in whose basic type of activity were civil engineering works (1.6%).

Compared with July 2022, increases in the value of works carried out were noted in entities dealing mainly with civil engineering works by 8.9%, performing specialised construction activities by 4.2% and in whose basic type of activity was construction of buildings by 1.4%.

<sup>1</sup> Reported data; comprise enterprises employing over 9 persons, whose the main type of activity is included in the section F "Construction" in accordance with the Polish Classification of Activities (PKD 2007).

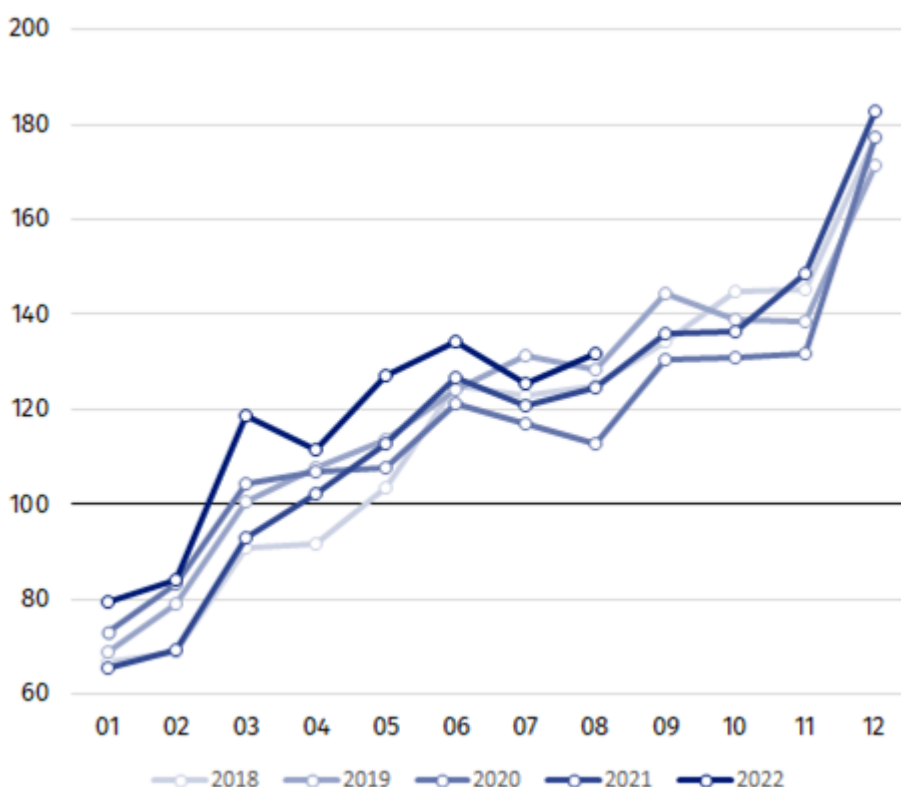
<sup>2</sup> Data including final information on production and prices in July and reported data in August.

In period of January-August 2022, sales of construction and assembly production, compared to the corresponding period of 2021, increased in all division of construction, in entities whose basic type of activity was construction of buildings (22.9%), performing specialised construction activities (5.0%) and dealing mainly with civil engineering works (3.7%).

Sales of construction and assembly production in August 2022, compared to the corresponding period of 2021 increased for investment works by 1.3% and for restoration works by 13.2% (increases of 9.0% and of 12.2% in the year before).

In the period of January-August 2022, in relation to the same period of previous year, there were increases of 5.2% in the value of investment works (a decrease of 4.5% in 2021) and of 17.6% in the value of works with a restoration character (an increase of 8.4% in 2021).

**Chart 1. Index numbers of construction and assembly production (constant prices; average monthly base 2015=100)<sup>3</sup>**



Index number of construction and assembly production in August 2022 (in constant prices), compared to the average monthly value of 2015, was 131.9.

After eliminating the seasonal factors, construction and assembly production reached the level by 7.2% higher than in August 2021 and by 1.1% higher in comparison to July 2022.

In case of quoting Statistics Poland data, please provide information: “Source of data: Statistics Poland” and in case of publishing calculations made on data published by Statistics Poland, please include the following disclaimer: “Own study based on figures from Statistics Poland”.

<sup>3</sup> Reported data for August 2022.

Prepared by:  
**Statistical Office in Lublin**

**Director Krzysztof Markowski**

Phone: (+48 81) 533 20 52

Issued by:  
**The Spokesperson for the President of Statistics  
Poland**

**Karolina Banaszek**

Phone: (+48) 695 255 011

**Press Office**

Phone: (+48 22) 608 38 04

**e-mail: [obslugaprasowa@stat.gov.pl](mailto:obslugaprasowa@stat.gov.pl)**



[www.stat.gov.pl/en/](http://www.stat.gov.pl/en/)



[@StatPoland](https://twitter.com/StatPoland)



[@GlownyUrzadStatystyczny](https://www.facebook.com/GlownyUrzadStatystyczny)



[gus\\_stat](https://www.instagram.com/gus_stat)



[glownyurządstatystycznygus](https://www.youtube.com/glownyurządstatystycznygus)



[glownyurządstatystyczny](https://www.linkedin.com/company/glownyurządstatystyczny)

**Related information**

[Statistical Bulletin](#)

[Socio-economic situation of the country](#)

**Data available in databases**

[Knowledge Database - Construction](#)

[Macroeconomic Data Bank](#)

[Macroeconomic indicators](#)

[Local Data Bank](#)

**Terms used in official statistics**

[Sale of construction and assembly production](#)

[Seasonally unadjusted index of sale of construction and assembly production in constant prices](#)

[Seasonally adjusted index of sale of construction and assembly production](#)

[Sale of construction works with an investment character](#)

[Sale of construction works with a restoration character and other works](#)