

Index numbers of construction and assembly production in June 2022 ¹

21.07.2022

 **105.9**

Index number of construction and assembly production as compared to June of 2021

According to preliminary data construction and assembly production (in constant prices) carried out domestically by construction enterprises employing more than 9 persons was in June 2022 by 5.9% higher than a year before (an increase of 4.5% the year before) and by 5.3% higher compared with May 2022 (an increase of 12.3% the year before).

Table 1. Index numbers of construction and assembly production (constant prices)

SPECIFICATION	06 2022		01-06 2022 ²
	05 2022=100	06 2021=100	01-06 2021=100
CONSTRUCTION	105.3	105.9	112.0
Construction of buildings ^Δ	98.3	115.2	124.6
Civil engineering works ^Δ	114.4	105.0	105.9
Specialised construction activities	101.5	96.9	105.9

^ΔAbbreviated form according PKD 2007.

Sales of construction and assembly production in June 2022, compared to the corresponding period of 2021, increased in entities dealing mainly with construction of buildings (15.2%) and in entities whose basic type of activity were civil engineering works (5.0%), whereas a decrease by 3,1 % was noted in performing specialised construction activities.

¹ Reported data; comprise enterprises employing over 9 persons, whose the main type of activity is included in the section F "Construction" in accordance with the Polish Classification of Activities (PKD 2007).

² Data including final information on production and prices in May and reported data in June.

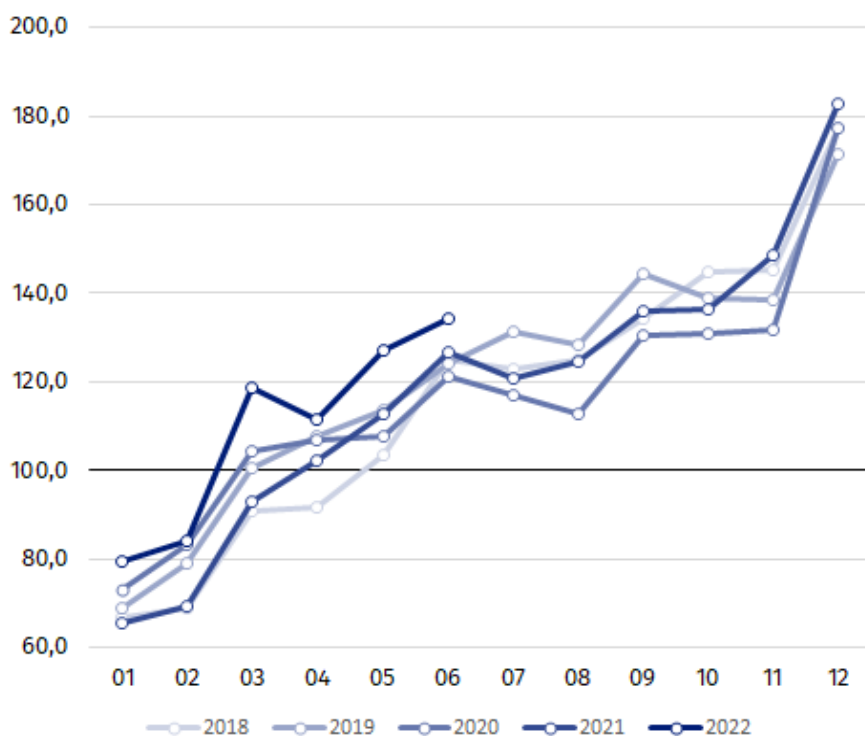
Compared with May 2022, increases in the value of works carried out were noted in entities dealing mainly with civil engineering works by 14.4%, performing specialised construction activities by 1.5%. A decrease by 1,7% was noted in entities whose basic type of activity was construction of buildings.

In period of first half-year 2022, sales of construction and assembly production, compared to the corresponding period of 2021, increased in all division of construction, in entities whose basic type of activity was construction of buildings (24.6%), dealing mainly with civil engineering works (5.9%) and performing specialised construction activities (5.9%).

Value of construction and assembly production including investment works in June 2022 was by 2.5% lower than in the corresponding period of 2021 (an increase of 4.5% in 2021), whereas works with a restoration character increased by 20.1% (an increase of 4.5% in 2021).

In the period of first half-year 2022, in relation to the same period of previous year, there was an increase of 6.5% in the value of investment works (a decrease of 6.9% in 2021), and of 20.6% in the value of works with a restoration character (an increase of 4.4% in 2021).

Chart 1. Index numbers of construction and assembly production (constant prices; average monthly base 2015=100)³



Index number of construction and assembly production in June 2022 (in constant prices), compared to the average monthly value of 2015, was 134.1.

After eliminating the seasonal factors, construction and assembly production reached the level by 6.7% higher than in June 2021 and by 3.5% lower in comparison to May 2022.

In case of quoting Statistics Poland data, please provide information: "Source of data: Statistics Poland" and in case of publishing calculations made on data published by Statistics Poland, please include the following disclaimer: "Own study based on figures from Statistics Poland".

³ Reported data for June 2022.

Prepared by:
Statistical Office in Lublin

Director Krzysztof Markowski

Phone: (+48 81) 533 20 52

Press Office

Phone: (+48 22) 608 38 04

e-mail: obslugaprasowa@stat.gov.pl

Issued by:
**The Spokesperson for the President of Statistics
Poland**

Karolina Banaszek

Phone: (+48) 695 255 011



www.stat.gov.pl/en/



[@StatPoland](https://twitter.com/StatPoland)



[@GlownyUrzadStatystyczny](https://www.facebook.com/GlownyUrzadStatystyczny)



[gus_stat](https://www.instagram.com/gus_stat)



[glownyurządstatystycznygus](https://www.youtube.com/channel/UCgus_stat)



[glownyurządstatystyczny](https://www.linkedin.com/company/glownyurządstatystyczny)

Related information

[Statistical Bulletin](#)

[Socio-economic situation of the country](#)

Data available in databases

[Knowledge Database - Construction](#)

[Macroeconomic Data Bank](#)

[Macroeconomic indicators](#)

[Local Data Bank](#)

Terms used in official statistics

[Sale of construction and assembly production](#)

[Seasonally unadjusted index of sale of construction and assembly production in constant prices](#)

[Seasonally adjusted index of sale of construction and assembly production](#)

[Sale of construction works with an investment character](#)

[Sale of construction works with a restoration character and other works](#)