

Index numbers of construction and assembly production in December 2019^{a)}

21.01.2020


96.7

Index number of construction and assembly production as compared to December of 2018

According to preliminary data construction and assembly production (in constant prices) carried out domestically by construction enterprises employing more than 9 persons was in December 2019 by 3.3% lower than a year before and by 23.7% higher compared with November 2019 (against increases accordingly by 12.3% and by 21.8% in the corresponding period of 2018).

In the period January-December 2019 construction and assembly production was by 2.6% higher in comparison to the same period of 2018, which saw an increase of 17.9%.

Table 1. Index numbers of construction and assembly production (constant prices)

SPECIFICATION	XII 2019		I-XII 2019 ¹
	XI 2019=100	XII 2018=100	I-XII 2018=100
CONSTRUCTION	123.7	96.7	102.6
Construction of buildings ^Δ	110.3	91.5	102.4
Civil engineering works ^Δ	132.6	100.4	102.6
Specialised construction activities	124.6	95.9	102.9

In comparison to November 2019 increase in the value of construction and assembly production was recorded

^Δ Abbreviated form according PKD 2007.

¹ Data including final information on production and prices in November and reported data in December.

^{a)} Reported data; comprise enterprises employing over 9 persons, whose the main type of activity is included in the section F "Construction" in accordance with the Polish Classification of Activities (PKD 2007).

In comparison to December 2018 a decrease in the value of construction and assembly production was recorded in entities dealing mainly with construction of buildings (8.5%) and performing specialised construction activities (4.1%). The value of construction and assembly was higher in entities whose basic type of activity were civil engineering works (0.4%).

Compared with November 2019, increases in the value of works carried out were noted in all divisions of construction, i.e. in entities whose basic type of activity were civil engineering works by 32.6%, in entities performing specialised construction activities by 24.6% and in whose basic type of activity was construction of buildings by 10.3%.

In the period January-December 2019 the highest increase in the value of construction and assembly production (2.9%) was recorded in entities performing specialised construction activities. Increases were also noted in entities whose basic type of activity were civil engineering works (2.6%) and dealing mainly with construction of buildings (2.4%).

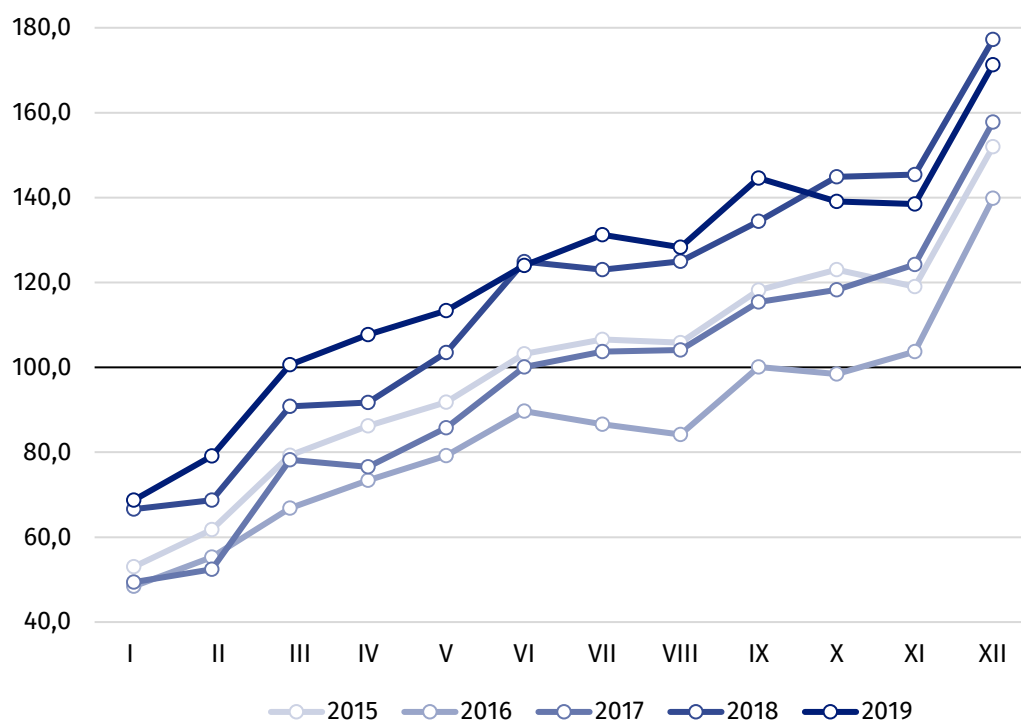
Value of construction and assembly production including investment works in December 2019 was by 3.8% lower than in the corresponding period of 2018 (against an increase by 9.7% in the year before), whereas works with a restoration character decreased by 2.5% (against an increase by 16.4% the year before).

In the period January-December 2019 an increase in the value of investment works was by 3.0% higher than in the corresponding period of 2018 and works with a restoration character - by 2.1% (against corresponding increases by 15.8% and 21.4% in 2018).

In December 2019 in comparison to December 2018 an increase in the value of construction and assembly production was noted among entities whose basic type of activity were civil engineering works

Value of investment works in 2019 increased by 3.0% y/y

Chart 1. Index numbers of construction and assembly production (constant prices) - average monthly base 2015=100²



² Reported data for December 2019.

Index number of construction and assembly production in December 2019 (in constant prices) compared to the average monthly value of 2015 was 171.3.

After eliminating the seasonal factors, construction and assembly production reached the level by 3.1% lower than in December 2018 and by 3.5% in comparison to November 2019.

Prepared by:

Statistical Office in Lublin
Director Krzysztof Markowski
Office: tel. (+48 81) 533 20 52

Issued by:

**The Spokesperson for the President
of Statistics Poland**
Karolina Banaszek
Mobile: (+48) 695 255 011

Press Office

Office: tel. (+48 22) 608 34 91, 608 38 04

e-mail: obslugaprasowa@stat.gov.pl



www.stat.gov.pl/en/



[@StatPoland](https://twitter.com/StatPoland)



[@GlownyUrzadStatystyczny](https://www.facebook.com/GlownyUrzadStatystyczny)

Related information

[Statistical Bulletin](#)

[Socio-economic situation of the country](#)

Data available in databases

[Knowledge Database - Construction](#)

[Macroeconomic Data Bank](#)

[Macroeconomic indicators](#)

[Local Data Bank](#)

Terms used in official statistics

[Sale of construction and assembly production](#)

[Seasonally unadjusted index of sale of construction and assembly production in constant prices](#)

[Seasonally adjusted index of sale of construction and assembly production](#)

[Sale of construction works with an investment character](#)

[Sale of construction works with a restoration character and other works](#)