

Index numbers of industrial and construction - assembly production in October 2018.^{a)}

20.11.2018 r.

 **107.4**

Index number of sold production of industry as compared to October of 2017

In October of 2018, sold production of industry was by 7.4% higher than in October of 2017, whereas an increase of 22.4% was reported in construction-assembly production. In the period January-October of 2018, sold production of industry was by 6.1% higher than in the corresponding period of 2017 which saw a 6.7% increase, whereas construction-assembly production was by 17.9% higher than in the corresponding period of 2017 which saw a 12.9% increase.

October was next month of increase in sold production of industry.

Table 1. Index numbers of industrial and construction-assembly production in real time (constant prices)

| SPECIFICATION | X 2018 | | | I-X 2018 ^{b)} |
|--|--------------|--------------|-----------------------------|------------------------|
| | IX 2018=100 | X 2017=100 | monthly average of 2015=100 | I-X 2017=100 |
| INDUSTRY | 109.9 | 107.4 | 128.7 | 106.1 |
| Mining and quarrying | 103.8 | 99.7 | 100.1 | 101.4 |
| Manufacturing | 109.7 | 107.3 | 132.2 | 106.1 |
| Electricity, gas, steam and air conditioning supply | 116.8 | 111.5 | 108.2 | 108.3 |
| Water supply; sewerage waste management and remediation activities | 103.8 | 108.6 | 119.4 | 105.9 |
| CONSTRUCTION | 107.8 | 122.4 | 144.8 | 117.9 |

^{a)} Reported data; comprise enterprises employing over 9 persons.

^{b)} Data including final information on production and prices in September and reported data – in October.

INDUSTRY

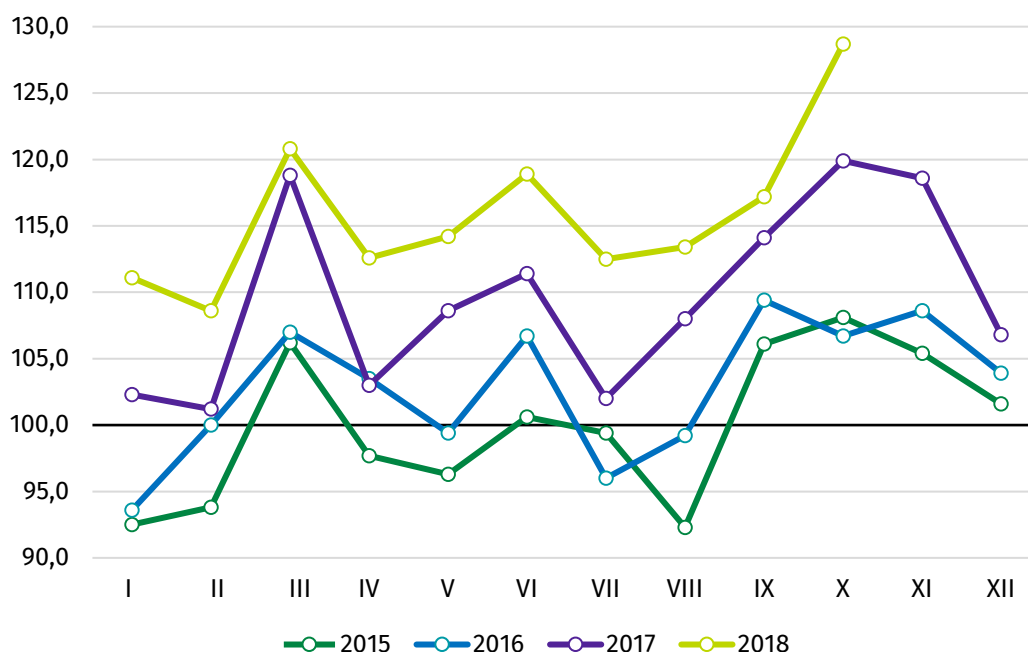
According to the preliminary data, **sold production of industry** in constant prices (in enterprises employing more than 9 persons), in October of 2018, was by 7.4% higher than in the previous year (when an increase of 12.3% was recorded) and by 9.9% higher than in September of 2018. After eliminating the seasonal factors, sold production of industry reached the level higher by 5.0% than in the corresponding month of 2017 and by 1.2% higher as compared to September of 2018.

As compared to October of 2017, an increase in sold production was reported in 28 (out of 34) industry divisions, among others, in manufacture of electrical equipment – by 19.5%, manufacture of other transport equipment – by 18.1%, manufacture of metal products – by 13.0%, in electricity, gas steam and air conditioning supply – by 11.5%, in manufacture of other non-metallic mineral products – by 11.1%, manufacture of paper and paper products – by 10.5%, manufacture of motor vehicles, trailers and semi-trailers – by 9.1% and manufacture of machinery and equipment – by 8.1%. A decrease in sold production of industry, as compared to October of 2017, was recorded in 6 divisions, among others, in manufacture of pharmaceutical products – by 24.0%, manufacture of leather and related products – by 7.0%, in mining of coal and lignite – by 1.9%.

Increase in sold production of industry in October amounted to 7.4% against a 12.3% increase in the previous year.

Share of production value of industry divisions that saw increase in their index numbers stood at 95.9%.

Chart 1. Sold production of industry (average monthly level in 2015=100)



CONSTRUCTION

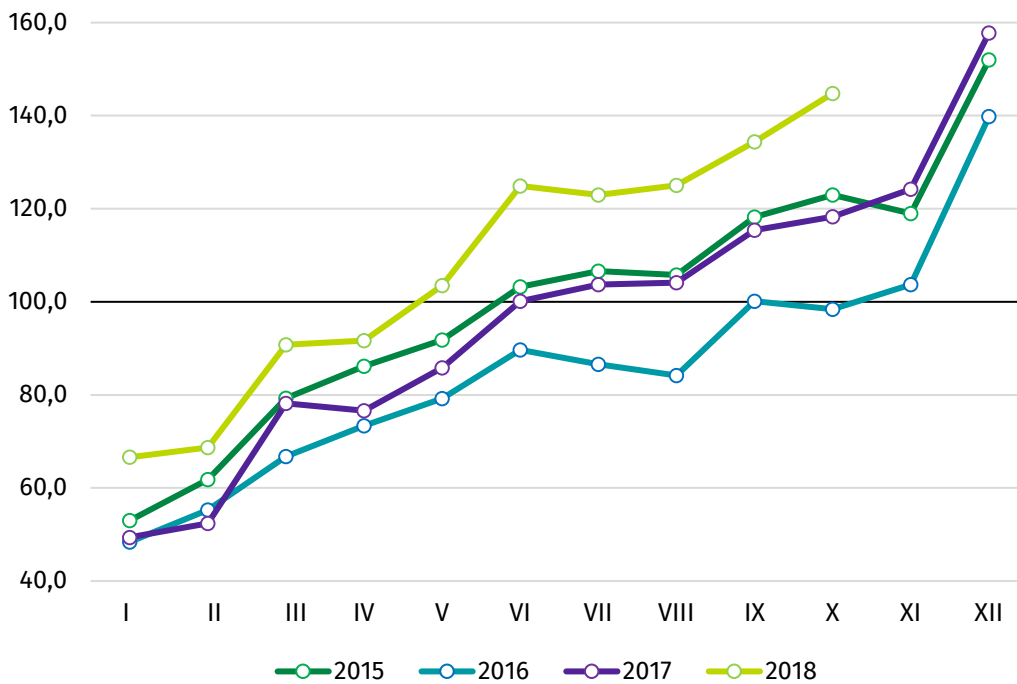
According to preliminary data, construction and assembly production (in constant prices), including investment and repair work, carried out domestically by construction enterprises employing more than 9 persons, was in October of 2018 by 22.4% higher than a year before (against an increase by 20.2% the year before) and by 7.8% lower in comparison to September of 2018. After eliminating the seasonal factors, construction and assembly production reached the level by 19.6% higher than in October of 2017 and by 0.5% lower in comparison to September of 2018.

In comparison to October of 2017 the highest increase (26.0%) in production was recorded in entities whose basic type of activity is the construction of buildings. Increases have noticed in entities dealing mainly with civil engineering works (25.2%) and in entities performing specialised construction activities (12.6%).

Compared with September this year the increase of value works carried out was noted in entities whose basic type of activity are civil engineering works (13.2%) and the construction of buildings (7.0%), while a decrease by 1.1% was noted in entities dealing mainly with the specialised construction activities.

Since the beginning of the year a large increase in the construction and assembly production has been maintained comparing to the same period of the previous year.

Chart 2. Construction and assembly production (average monthly level in 2015=100).



Prepared by:

Enterprises Department

Beata Kaczorowska

Tel: 22 608 34 16

e-mail: B.Kaczorowska@stat.gov.pl

Statistical Office in Lublin

Zofia Kurlej

Tel: 81 533 23 01

e-mail: Z.Kurlej@stat.gov.pl

Issued by:

**The Spokesperson for the President of
Statistics Poland**

Karolina Dawidziuk

Tel: 22 608 3475, 22 608 30 09

e-mail: rzecznik@stat.gov.pl

Press Office

tel.: (+48 22) 608 34 91, (+48 22) 608 38 04

fax: (+48 22) 608 38 86

e-mail: obslugaprasowa@stat.gov.pl



www.stat.gov.pl/en



[@StatPoland](https://twitter.com/StatPoland)



[@GlownyUrzadStatystyczny](https://www.facebook.com/GlownyUrzadStatystyczny)

Related information

[Statistical Bulletin](#)

[Socio-economic situation of the country](#)

Data available in databases

[Knowledge Database - Industrial Production](#)

[Knowledge Database - Construction](#)

[Macroeconomic Data Bank](#)

[Macroeconomic indicators](#)

[Local Data Bank](#)

Terms used in official statistics

[Sold production of industry](#)

[Sale of construction and assembly production](#)

[Seasonally un-adjusted volume index of sold production of industry](#)

[Seasonally adjusted volume index of sold production of industry](#)

[Seasonally unadjusted index of sale of construction and assembly production in constant prices](#)

[Seasonally adjusted index of sale of construction and assembly production](#)