

## Index numbers of industrial and construction - assembly production in July 2018.<sup>a)</sup>

20.08.2018 r.

 **110.3**

Index number of sold production of industry as compared to July of 2017

In July of 2018, sold production of industry was by 10.3% higher than in July of 2017, whereas an increase of 18.7% was reported in construction-assembly production. In the period January-July of 2018, sold production of industry was by 6.7% higher than in the corresponding period of 2017 which saw a 5.9% increase, whereas construction-assembly production was by 21.4% higher than in the corresponding period of 2017 which saw a 10.6% increase.

July was next month of increase in sold production of industry compared to the previous year.

**Table 1. Index numbers of industrial and construction-assembly production in real time (constant prices)**

SPECIFICATION	VII 2018			I-VII 2018 <sup>b)</sup>
	VI 2018=100	VII 2017=100	monthly average of 2015=100	I-VII 2017=100
<b>INDUSTRY</b>	<b>94.6</b>	<b>110.3</b>	<b>112.5</b>	<b>106.7</b>
Mining and quarrying	96.4	104.4	90.6	99.8
Manufacturing	94.0	110.2	115.4	106.8
Electricity, gas, steam and air conditioning supply	102.1	115.9	91.6	109.1
Water supply; sewerage waste management and remediation activities	95.8	107.7	113.8	105.0
<b>CONSTRUCTION</b>	<b>98.5</b>	<b>118.7</b>	<b>123.0</b>	<b>121.4</b>

<sup>a)</sup> Reported data; comprise enterprises employing over 9 persons.

<sup>b)</sup> Data including final information on production and prices in June and reported data – in July.

## INDUSTRY

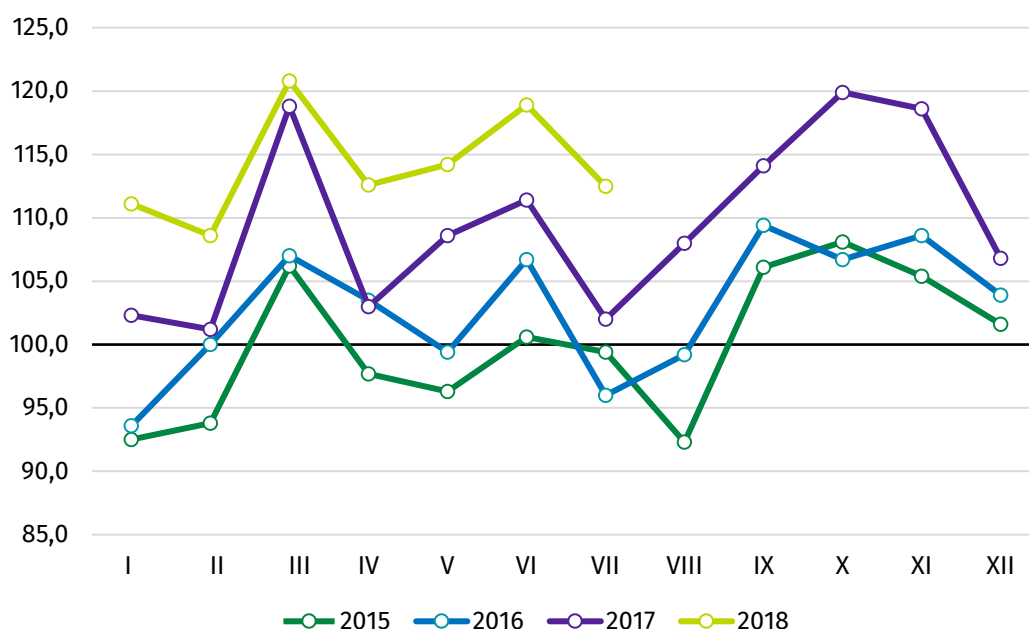
According to the preliminary data, **sold production of industry** in constant prices (in enterprises employing more than 9 persons), in July of 2018, was by 10.3% higher than in the previous year (when an increase of 6.2% was recorded) and by 5.4% lower than in June of 2018. After eliminating the seasonal factors, sold production of industry reached the level higher by 7.8% than in the corresponding month of 2017 and remained at the same level as compared to June of 2018.

As compared to July of 2017, an increase in sold production was reported in 30 (out of 34) industry divisions, among others, in manufacture of machinery and equipment – by 25.0%, manufacture of other transport equipment – by 20.6%, manufacture of metal products – by 18.0%, manufacture of electrical equipment – by 17.5%, in electricity, gas steam and air conditioning supply – by 15.9%, in manufacture of coke and refined petroleum products – by 13.1, manufacture of products of wood, cork, straw and wicker – by 12.5%, manufacture of paper and paper products – by 11.3%. A decrease in sold production of industry, as compared to July of 2017, was recorded in 4 divisions, among others, in manufacture of leather and related products – by 4.7%, manufacture of pharmaceutical products – by 3.3%, manufacture of computer, electronic and optical products – by 2.6%.

Increase in sold production of industry in July amounted to 10.3% against a 6.2% increase in the previous year.

Share of production value of industry divisions that saw increase in their index numbers stood at 96.6%.

**Chart 1. Sold production of industry (average monthly level in 2015=100)**



## CONSTRUCTION

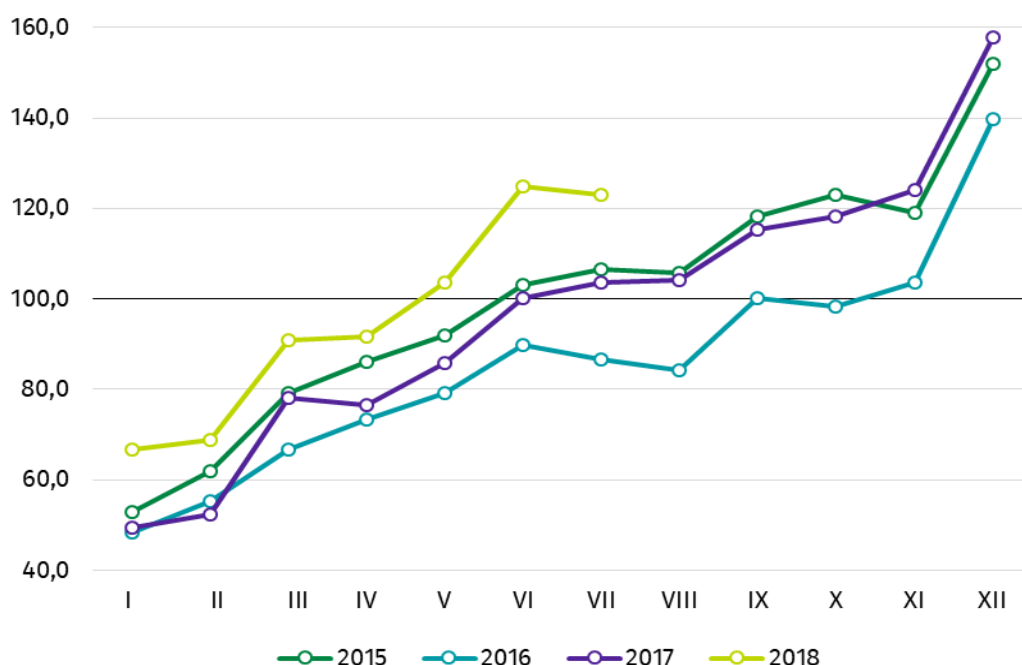
According to preliminary data, construction and assembly production (in constant prices), including investment and repair work, carried out domestically by construction enterprises employing more than 9 persons, was in July of 2018 by 18.7% higher than a year before (against an increase by 19.8% the year before) and by 1.5% lower in comparison to June of 2018. After eliminating the seasonal factors, construction and assembly production reached the level by 16.6% higher than in July of 2017 and by 1.0% lower in comparison to June of 2018.

In comparison to July of 2017 the highest increase (21.9%) in production was recorded in entities whose basic type of activity is specialised construction activities. Increases have noticed entities whose basic type of activity are civil engineering works (20.6%) and entities dealing mainly with the construction of buildings (14.1%).

Compared with June this year the increase in production by 3.8% occurred in entities performing mainly specialised construction activities, while the decrease in production by 3.9% was noted in entities whose basic type of activity is the construction of building and by 2.4% in entities dealing mainly with civil engineering.

Since the beginning of the year a large increase in the construction and assembly production realized by entities dealing mainly with civil engineering has been maintained comparing to the same period of the previous.

**Chart 2. Construction and assembly production (average monthly level in 2015=100).**



Prepared by:

**Enterprises Department**

**Beata Kaczorowska**

Tel: 22 608 34 16

e-mail: [B.Kaczorowska@stat.gov.pl](mailto:B.Kaczorowska@stat.gov.pl)

**Statistical Office in Lublin**

**Zofia Kurlej**

Tel: 81 533 23 01

e-mail: [Z.Kurlej@stat.gov.pl](mailto:Z.Kurlej@stat.gov.pl)

Issued by:

**The Spokesperson for the President of  
Statistics Poland**

**Karolina Dawidziuk**

Tel: 22 608 3475, 22 608 30 09

e-mail: [rzecznik@stat.gov.pl](mailto:rzecznik@stat.gov.pl)

#### **Press Office**

tel.: (+48 22) 608 34 91, (+48 22) 608 38 04

fax: (+48 22) 608 38 86

e-mail: [obslugaprasowa@stat.gov.pl](mailto:obslugaprasowa@stat.gov.pl)



[www.stat.gov.pl/en](http://www.stat.gov.pl/en)



[@StatPoland](https://twitter.com/StatPoland)



[@GlownyUrzadStatystyczny](https://www.facebook.com/GlownyUrzadStatystyczny)

#### **Related information**

[Statistical Bulletin](#)

[Socio-economic situation of the country](#)

#### **Data available in databases**

[Knowledge Database - Industrial Production](#)

[Knowledge Database - Construction](#)

[Macroeconomic Data Bank](#)

[Macroeconomic indicators](#)

[Local Data Bank](#)

#### **Terms used in official statistics**

[Sold production of industry](#)

[Sale of construction and assembly production](#)

[Seasonally un-adjusted volume index of sold production of industry](#)

[Seasonally adjusted volume index of sold production of industry](#)

[Seasonally unadjusted index of sale of construction and assembly production in constant prices](#)

[Seasonally adjusted index of sale of construction and assembly production](#)