

# Index numbers of sold production of industry in January 2020<sup>a)</sup>

20.02.2020

**↑1.1%**

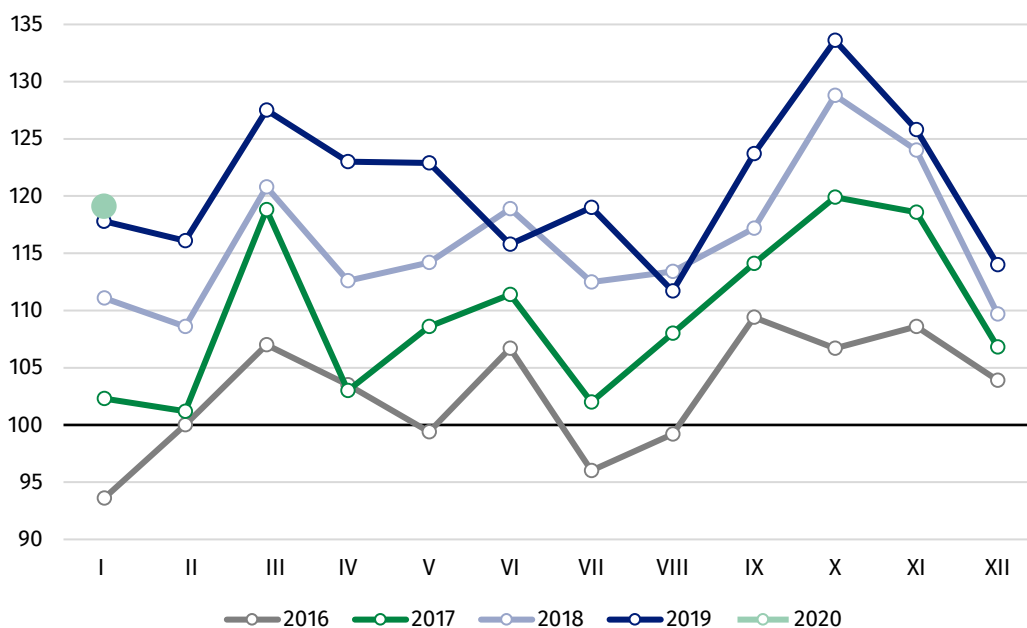
Increase in sold production of industry, as compared to January 2019

In January 2020, sold production of industry was by 1.1% higher than in January 2019, when the growth was recorded by 6.0%, whereas in comparison with December 2019, it increased by 4.5%.

After eliminating the seasonal factors, in January 2020 sold production of industry reached the level higher by 3.5% than in the corresponding month of 2019 and by 2.7% higher as compared to December 2019.

After seasonal adjustment, an increase in sold industrial production in January 2020 amounted to 3.5% per year

**Chart 1. Sold production of industry (average monthly level in 2015=100)**



In most of the main industrial groupings, in January 2020, as compared to the previous year, an increase of production was recorded. The production of intermediate goods increased by 3.1%, durable consumer goods – by 2.0%, capital goods – by 1.0%. A decrease was observed in the production of energy – by 3.7% and non-durable consumer goods – by 1.0%.

<sup>a)</sup> Reported data; comprise enterprises with 10 or more persons employed.

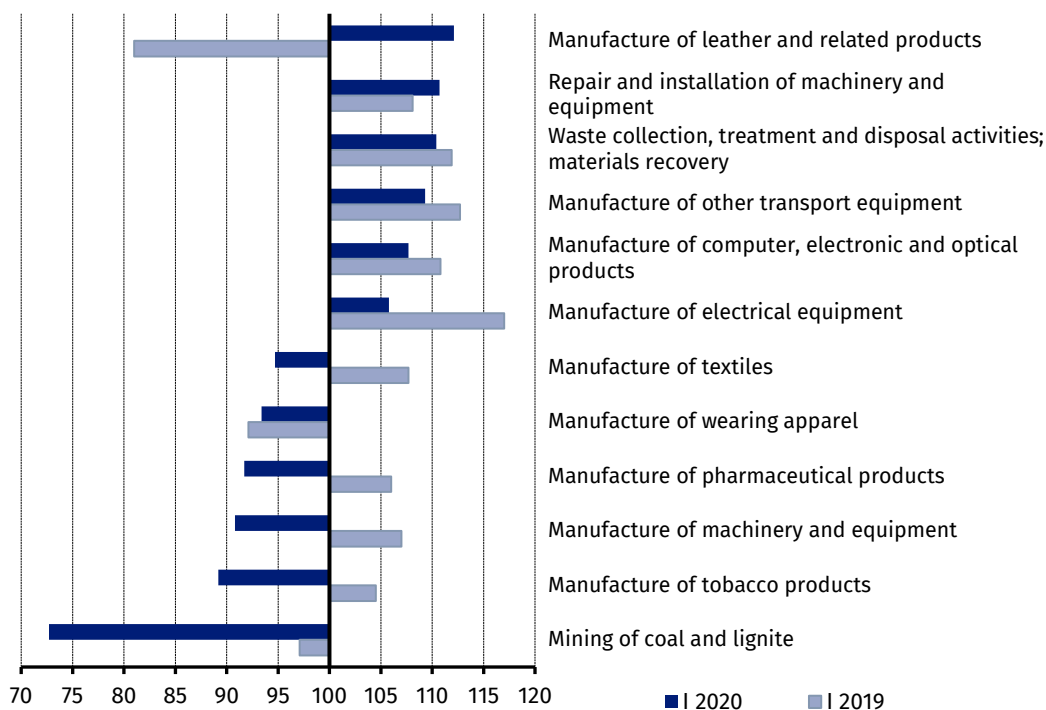
**Table 1. Index numbers of sold production of industry (constant prices)**

SPECIFICATION	I 2020		
	XII 2019=100	I 2019=100	monthly average of 2015=100
<b>INDUSTRY</b>	<b>104.5</b>	<b>101.1</b>	<b>119.1</b>
Mining and quarrying	80.3	89.6	68.6
Manufacturing	105.8	101.9	119.7
Electricity, gas, steam and air conditioning supply	102.7	95.8	136.2
Water supply; sewerage waste management and remediation activities	94.8	107.5	120.6

According to the preliminary data, in January 2020, as compared to January 2019, an increase in sold production (in constant prices) was reported in 24 (out of 34) industry divisions, among others, in manufacture of other transport equipment – by 9.3%, manufacture of computer, electronic and optical products – by 7.7%, manufacture of electrical equipment – by 5.8%, manufacture of other non-metallic mineral products and manufacture of metal products – by 5.6% each, manufacture of coke and refined petroleum products and manufacture of paper and paper products – by 3.5% each. A decrease in sold production of industry, as compared to January 2019, was recorded in 10 divisions, among others, in mining of coal and lignite – by 27.3%, in manufacture of machinery and equipment – by 9.2%, in electricity, gas steam and air conditioning supply – by 4.2% and in manufacture of chemicals and chemical products – by 3.0%.

Share of production value of industry divisions, which saw an increase in their index numbers, stood at 63.3%

**Chart 2. Index numbers of sold production of industry by selected NACE divisions (constant prices; previous year =100)**



Prepared by:  
**Enterprises Department**  
**Director Katarzyna Walkowska**  
Office: tel. (+48 22) 608 31 25

Issued by:  
**The Spokesperson for the President of**  
**Statistics Poland**  
**Karolina Banaszek**  
Mobile: (+48) 695 255 011

#### **Press Office**

Office: tel. (+48 22) 608 34 91, 608 38 04

**e-mail: [obslugaprasowa@stat.gov.pl](mailto:obslugaprasowa@stat.gov.pl)**



[www.stat.gov.pl/en/](http://www.stat.gov.pl/en/)



[@StatPoland](https://twitter.com/StatPoland)



[@GlownyUrzadStatystyczny](https://www.facebook.com/GlownyUrzadStatystyczny)

#### **Related information**

[Statistical Bulletin](#)

[Socio-economic situation of the country](#)

#### **Data available in databases**

[Knowledge Database - Industrial Production](#)

[Macroeconomic Data Bank](#)

[Macroeconomic indicators](#)

[Local Data Bank](#)

#### **Terms used in official statistics**

[Sold production of industry](#)

[Seasonally un-adjusted volume index of sold production of industry](#)

[Seasonally adjusted volume index of sold production of industry](#)

[Production of capital goods](#)

[Production of non-durable consumer goods](#)

[Production of durable consumer goods](#)

[Production of intermediate goods](#)

[Production of goods related to energy](#)