

**PRICE INDICES OF SOLD PRODUCTION OF INDUSTRY  
AND CONSTRUCTION AND ASSEMBLY PRODUCTION  
in January 2014**

| Specification  | December 2013             |                                     | Jan.-<br>December<br>2013 | January 2014             |                           |
|--|---------------------------|-------------------------------------|---------------------------|--------------------------|---------------------------|
|  | November<br>2013=<br>=100 | corresponding period<br>of 2012=100 |                           | January<br>2013=<br>=100 | December<br>2013=<br>=100 |
| <b>PRICE INDICES OF SOLD PRODUCTION OF INDUSTRY</b>                                      |                           |                                     |                           |                          |                           |
| <b>TOTAL .....</b>   | <b>99.9*</b>              | <b>99.0*</b>                        | <b>98.7</b>               | <b>99.1</b>              | <b>100.1</b>              |
| <b>Mining and quarrying .....</b>  | <b>99.2</b>               | <b>90.3</b>                         | <b>89.7</b>               | <b>92.1</b>              | <b>100.7</b>              |
| <b>Manufacturing .....</b>   | <b>100.0*</b>             | <b>99.7*</b>                        | <b>99.2</b>               | <b>99.4</b>              | <b>100.0</b>              |
| <b>Electricity, gas, steam and air<br/>conditioning supply .....</b>                     | <b>100.0</b>              | <b>98.4</b>                         | <b>99.4</b>               | <b>100.6</b>             | <b>100.5</b>              |
| <b>Water supply; sewerage,<br/>waste management and<br/>remediation activities .....</b> | <b>100.0</b>              | <b>101.5</b>                        | <b>101.6</b>              | <b>100.8</b>             | <b>100.6</b>              |
| <b>PRICE INDICES OF CONSTRUCTION AND ASSEMBLY PRODUCTION</b>                             |                           |                                     |                           |                          |                           |
| <b>TOTAL .....</b>   | <b>99.9</b>               | <b>98.3</b>                         | <b>98.2</b>               | <b>98.3</b>              | <b>99.8</b>               |

\* Data revised.

According to preliminary data, **the prices of sold production of industry** in January of 2014 were by 0.1% higher than in the previous month. The highest increase of prices was recorded in mining and quarrying (by 0.7%), of which in mining of metal ores (by 1.7%) as well as in mining of coal and lignite (by 0.3%). The prices in section water supply; sewerage, waste management and remediation activities increased by 0,6% and in section electricity, gas, steam and air conditioning supply – by 0.5%. Prices in manufacturing reached the level similar to the one recorded in the previous month. The highest growth of prices was recorded in manufacture of pharmaceutical products (by 1.2%). The prices were higher in manufacture of basic metals, of paper and paper products (by 1.0% each), of printing and reproduction of recorded media (by 0.6%), of chemicals and chemical products (by 0.5%), of products of wood, cork, straw and wicker, of other transport equipment (by 0.4% each), of machinery and equipment (by 0.3%), of food products, of rubber and plastic products, of beverages (by 0.2% each), of textiles (by 0.1%). However the prices were lower among other things in manufacture of motor vehicles, trailers and semi-trailers, of furniture (of 0.1% each), of electrical equipment, of computer, electronic and optical products (of 0.2% each), of other non-metallic mineral products (of 0.3%), of metal products, of wearing apparel (of 0.4% each), of leather and related products (of 0.8%) as well as of coke and refined petroleum products (of 1.3%).

In January of 2014 the prices of sold production of industry were of 0.9% lower than a year earlier. The drop of prices was recorded in mining and quarrying (of 7.9%) and in manufacturing (of 0.6%) The prices increased in sections: electricity, gas, steam and air conditioning supply (by 0.6%) as well as water supply; sewerage, waste management and remediation activities (by 0.8%).

It is estimated that the **prices of construction and assembly production** in January of 2014 were of 0.2% lower than in the previous month. A drop price was recorded in construction of buildings, in civil engineering (of 0.2% each) as well as in specialised construction activities (of 0.1%).

In comparison to January of the previous year, the prices of construction and assembly production fell of 1.7%.

Fig. 1.

**Dynamics of prices in 2013-2014**  
XII 2012 = 100

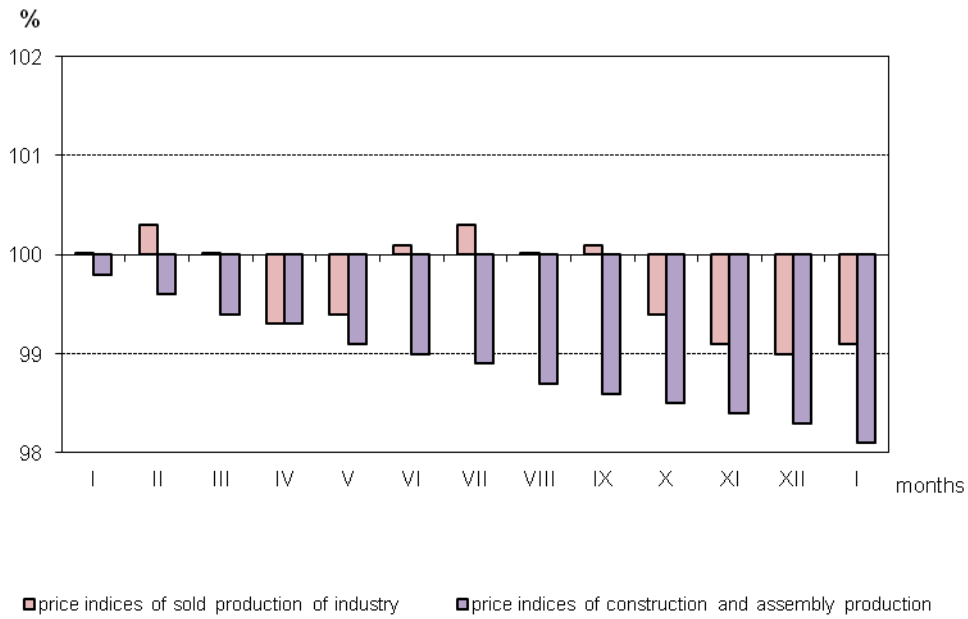


Fig. 2.

**Dynamics of prices of sold production of industry sections in 2013-2014**  
XII 2012 = 100

