

**PRICE INDICES OF SOLD PRODUCTION OF INDUSTRY  
AND CONSTRUCTION AND ASSEMBLY PRODUCTION  
in February 2013**

Specification	January 2013		February 2013			Jan.- February 2013
	December 2012= =100	corresponding period of 2012=100	January 2013= =100	December 2012= =100	Jan.- February 2012=100	
<b>PRICE INDICES OF SOLD PRODUCTION OF INDUSTRY</b>						
<b>TOTAL .....</b>	<b>100.0*</b>	<b>98.8</b>	<b>99.6</b>	<b>100.3</b>	<b>100.3</b>	<b>99.2</b>
<b>Mining and quarrying .....</b>	<b>98.7</b>	<b>91.2*</b>	<b>92.2</b>	<b>100.5</b>	<b>99.2</b>	<b>91.7</b>
<b>Manufacturing .....</b>	<b>100.3*</b>	<b>98.8*</b>	<b>99.8</b>	<b>100.4</b>	<b>100.7</b>	<b>99.3</b>
<b>Electricity, gas, steam and air conditioning supply .....</b>	<b>98.3</b>	<b>102.5</b>	<b>102.2</b>	<b>99.9</b>	<b>98.2</b>	<b>102.3</b>
<b>Water supply; sewerage, waste management and remediation activities .....</b>	<b>101.3</b>	<b>102.1</b>	<b>101.7</b>	<b>100.2</b>	<b>101.5</b>	<b>101.9</b>
<b>PRICE INDICES OF CONSTRUCTION AND ASSEMBLY PRODUCTION</b>						
<b>TOTAL .....</b>	<b>99.8</b>	<b>98.6</b>	<b>98.4</b>	<b>99.8</b>	<b>99.6</b>	<b>98.5</b>

\* Data revised.

According to preliminary data, **the prices of sold production of industry** in February of 2013 were by 0.3% higher than in the previous month. The highest increase of prices was recorded in mining and quarrying (by 0.5%). Prices in manufacturing increased by 0.4%, of which in manufacture of coke and refined petroleum products (by 3.2%). The growth of prices was recorded also among other things in printing and reproduction of recorded media (by 1.2%), in manufacture of computer, electronic and optical products (by 1.1%), of leather and related products (by 0.6%), of basic metals (of 0.5%), of wearing apparel (by 0.4%), of paper and paper products (of 0.3%), of rubber and plastic products, of other transport equipment (by 0.2% each), of motor vehicles, trailers and semi-trailers, of chemicals and chemical products, of other non-metallic mineral products, of textiles (by 0.1% each). However the prices were lower among other things in manufacture of metal products, of electrical equipment, of machinery and equipment, of furniture, of products of wood, cork, straw and wicker (of 0.1% each), of food products (of 0.2%), of beverages (of 0.5%) as well as of pharmaceutical products (of 1.3%). The growth of prices was recorded in section water supply; sewerage, waste management and remediation activities (by 0.2%). The prices in section electricity, gas, steam and air conditioning supply was lower of 0.1%.

In February of 2013 the prices of sold production of industry were of 0.4% lower than a year earlier. The drop of prices was recorded in mining and quarrying (of 7.8%) and in manufacturing (of 0.2%) The prices increased in sections: water supply; sewerage, waste management and remediation activities (by 1.7%) as well as electricity, gas, steam and air conditioning supply (by 2.2%).

It is estimated that the **prices of construction and assembly production** in February of 2013 were of 0.2% lower than in the previous month. A drop price was recorded in construction of buildings (of 0.3%), in civil engineering as well as in specialised construction activities (of 0.2% each).

In comparison to February of the previous year, the prices of construction and assembly production dropped of 1.6% (against growth by 1.4% a year earlier).

Fig. 1.

**Dynamics of prices in 2012-2013**

XII 2011 = 100

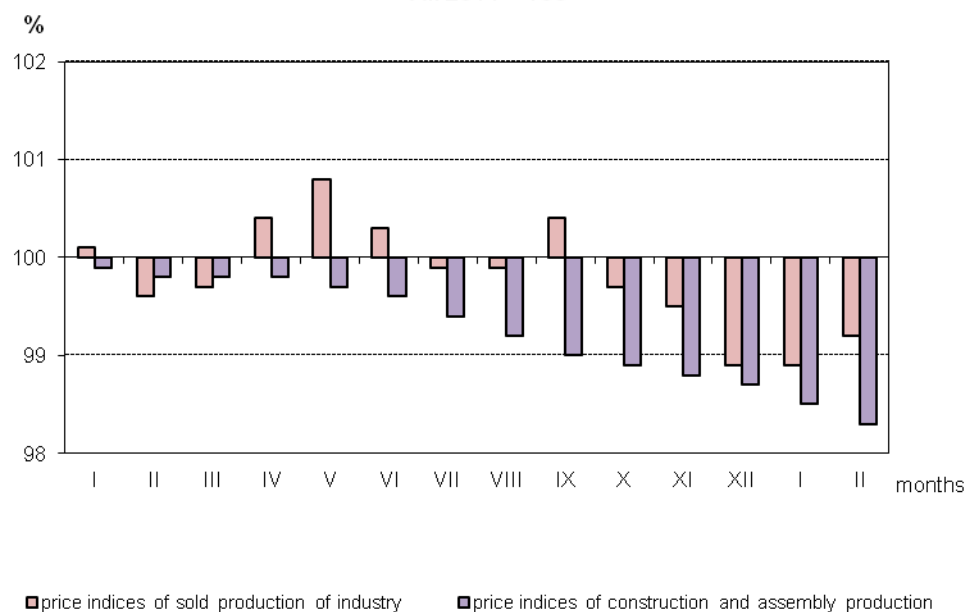


Fig. 2.

**Dynamics of prices of sold production of industry sections in 2012-2013**

XII 2011 = 100

