

Price indices of construction and assembly production in February 2025

20.03.2025


3.6%

the growth of producer prices in construction in comparison with February 2024

According to preliminary data, in February 2025 the prices of construction and assembly production were higher by 3.6% in comparison with the corresponding month of the previous year, and compared to January 2025 they increased by 0.2%.

In February 2025 in comparison with January 2025 the growth of prices was recorded in civil engineering and in specialised construction activities (by 0.2% each), as well as the prices of construction of buildings (by 0.1%).

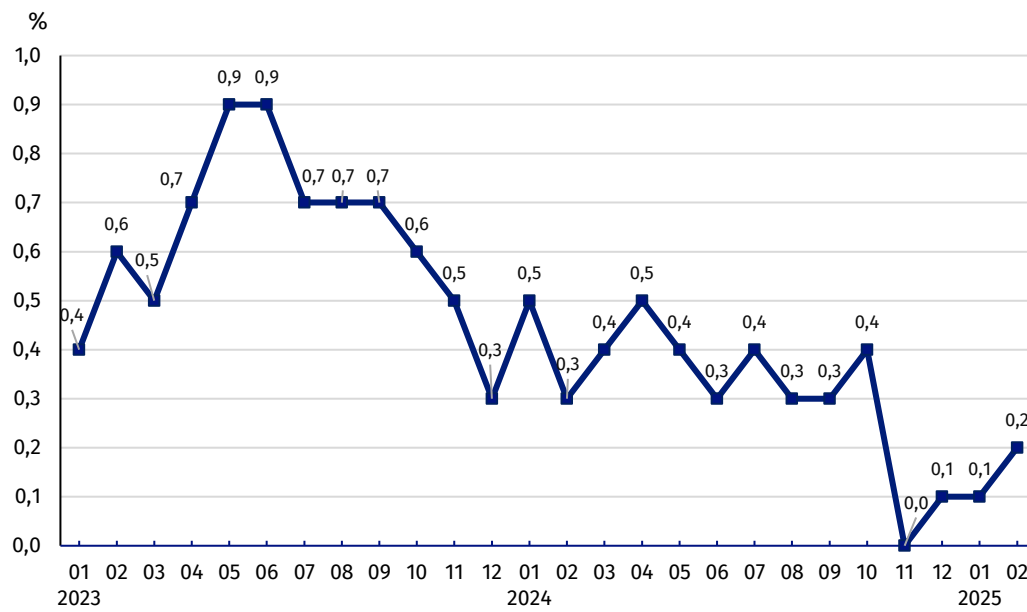
In comparison with February 2024 prices for the civil engineering (by 3.7%), specialised construction activities (by 3.6%), and construction of buildings (by 3.5%) have been increased .

Table 1. Price indices of construction and assembly production

SPECIFICATION	01 2025		02 2025		01-02 2025
	12 2024=100	corresponding period 2024 = 100	01 2025=100	12 2024=100	01-02 2024=100
TOTAL	100.1*	103.7*	103.6	100.2	100.3
Construction of buildings	100.1*	103.6*	103.6	100.1	100.2
Civil engineering	100.2*	103.9*	103.7	100.2	100.4
Specialised construction activities	100.1*	103.6*	103.5	100.2	100.3

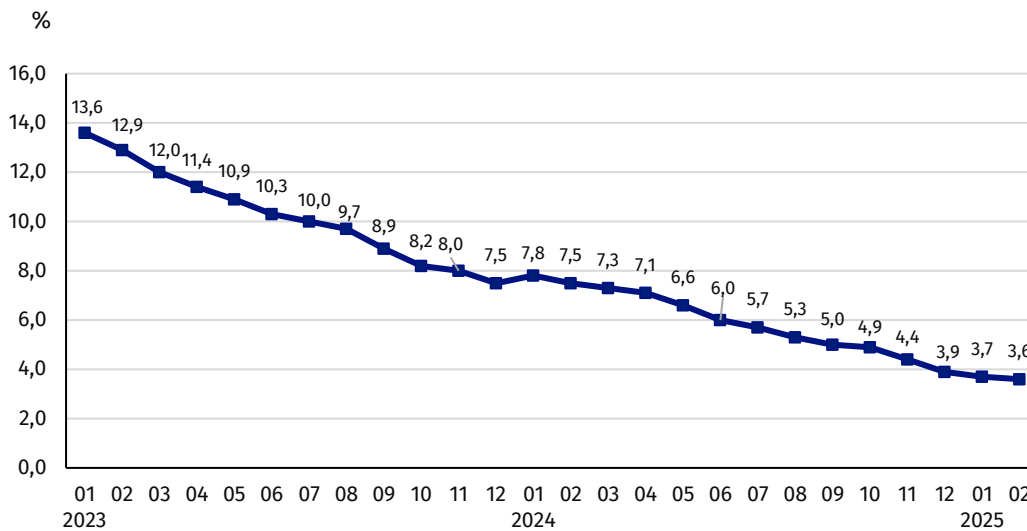
* Data revised

Chart 1. Prices changes of construction and assembly production compared to the previous month



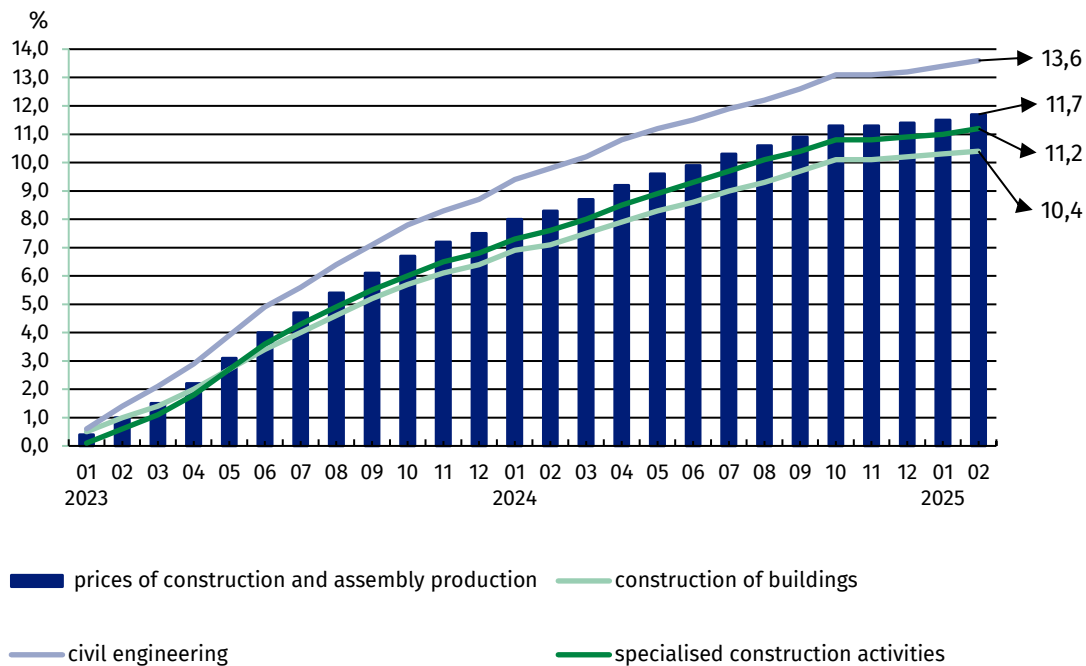
The prices of construction and assembly production in February 2025 increased by 0.2% compared to January 2025

Chart 2. Prices changes of construction and assembly production compared to the corresponding period of the previous year



In February 2025, the prices of construction and assembly production were higher by 3.6% annually

Chart 3. Prices changes of production and assembly construction by divisions NACE compared to December 2022








Among the construction divisions, in February 2025 compared to December 2022, the prices increased the most in the construction of civil engineering (by 13.6%)

In case of quoting Statistics Poland data. please provide information: "Source of data: Statistics Poland". and in case of publishing calculations made on data published by Statistics Poland. please include the following disclaimer: "Own study based on figures from Statistics Poland".

Prepared by:
The Trade and Services Department
Director Ewa Adach-Stankiewicz
Phone: (+48 22) 608 31 24

Issued by:
Press Office
Mobile: (+48) 695 255 032
Phone: (+48 22) 608 38 04, (+48 22) 449 41 45,
(+48 22) 608 30 09

e-mail: obslugaprasowa@stat.gov.pl

-  stat.gov.pl/en/
-  [@StatPoland](https://twitter.com/StatPoland)
-  [@GlownyUrzadStatystyczny](https://www.facebook.com/GlownyUrzadStatystyczny)
-  [gus_stat](https://www.instagram.com/gus_stat)
-  [glownyurządstatystycznygus](https://www.youtube.com/glownyurządstatystycznygus)
-  [glownyurządstatystyczny](https://www.linkedin.com/company/glownyurządstatystyczny)

Related information

[Statistical Bulletin](#)

[News Releases](#)

[Socio-economic situation of the country in January 2025](#)

Data available in databases

[Analytical Platform - Knowledge Databases](#)

[Macroeconomic Data Bank](#)

[Prices indices \(Topics: Prices, Trade\)](#)

Terms used in official statistics

[Price index of construction and assembly production](#)