

# Price indices of construction and assembly production in December 2021

21.01.2022



the growth of producer prices in construction in comparison with December 2020

According to preliminary data, in December 2021 the prices of construction and assembly production in comparison with the corresponding month of the previous year increased by 7.6%, and in comparison with November 2021 - by 1.0%.

In December 2021 in comparison with November 2021 the growth of prices was recorded in construction of buildings as well as in civil engineering - by 1.0% each and in specialised construction activities - by 0.9%.

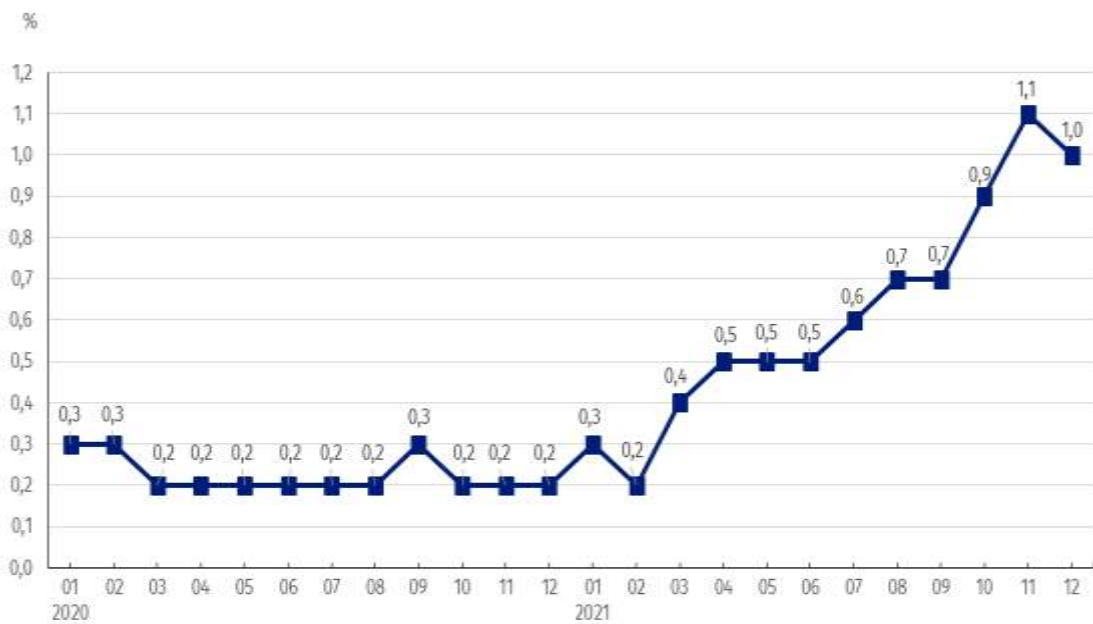
In comparison with December 2020 the increase of prices was noticed in construction of buildings by 7.8%, in civil engineering - by 7.6% as well as in specialised construction activities - by 6.5%.

**Table 1. Price indices of construction and assembly production in December 2021**

SPECIFICATION	11 2021		12 2021		01-12 2021
	10 2021=100	corresponding period 2020=100		11 2021=100	01 -12 2020=100
<b>TOTAL</b>	<b>101.1*</b>	<b>106.6*</b>	<b>107.6</b>	<b>101.0</b>	<b>104.2</b>
Construction of buildings	101.1*	107.2*	107.8	101.0	104.7
Civil engineering	101.1*	106.6*	107.6	101.0	104.2
Specialised construction activities	101.0*	105.8*	106.5	100.9	103.5

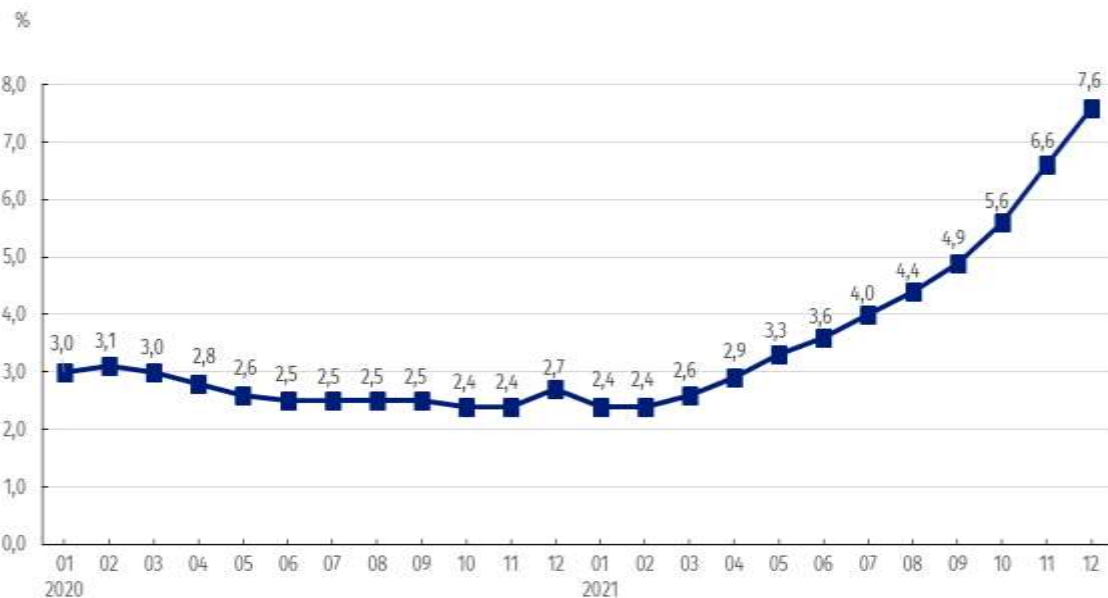
\* Data revised.

**Chart 1. Prices changes of construction and assembly production in 2020-2021 in relation to the previous period**



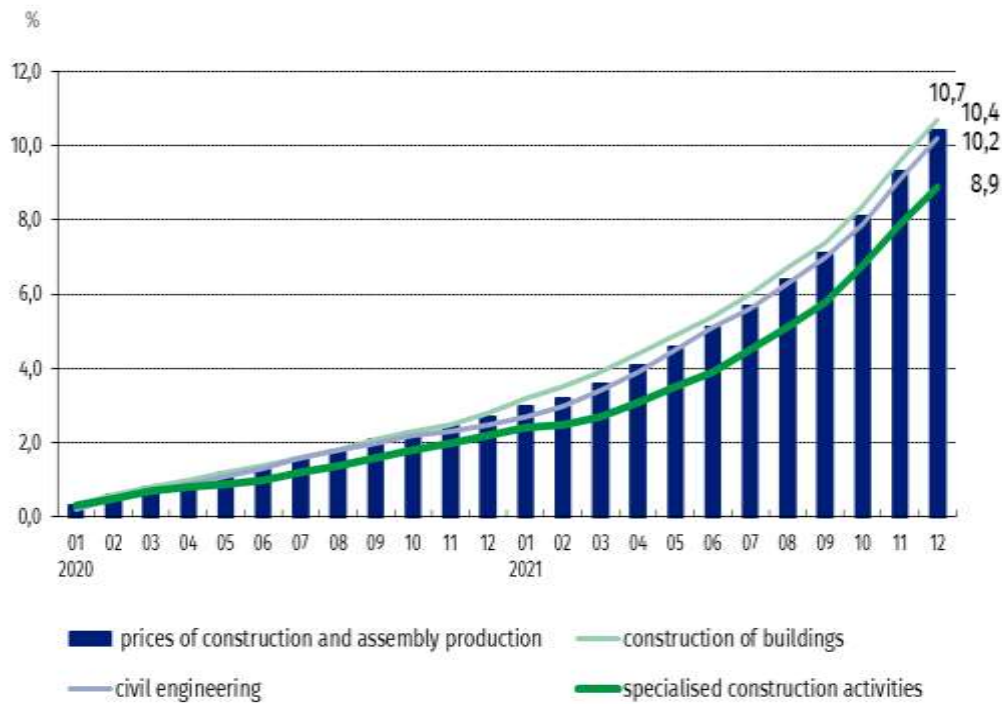
In December 2021 the prices of construction and assembly production compared to the previous month increased by 1.0%

**Chart 2. Prices changes of construction and assembly production in 2020-2021 in relation to the same period of the previous year**



From March 2021 a growing trend is observed in the prices dynamics of construction and assembly production in annual terms

**Chart 3. Prices changes of production and assembly construction by divisions NACE in 2020-2021 in relation to December 2019**



Starting from January 2020 the highest prices growth is recorded in construction of buildings

In case of quoting Statistics Poland data, please provide information: "Source of data: Statistics Poland", and in case of publishing calculations made on data published by Statistics Poland, please include the following disclaimer: "Own study based on figures from Statistics Poland".

Prepared by:  
**The Trade and Services Department**  
**Director Ewa Adach-Stankiewicz**  
Office: tel. (+48 22) 608 31 24

Issued by:  
**The Spokesperson for the President**  
**of Statistics Poland**  
**Karolina Banaszek**  
Mobile: (+48) 695 255 011

#### **Press Office**

Office: tel. (+48 22) 608 34 91, 608 38 04

**e-mail: [obslugaprasowa@stat.gov.pl](mailto:obslugaprasowa@stat.gov.pl)**



[www.stat.gov.pl/en/](http://www.stat.gov.pl/en/)



[@StatPoland](https://twitter.com/StatPoland)



[@GlownyUrzadStatystyczny](https://www.facebook.com/GlownyUrzadStatystyczny)

#### **Related information**

[Statistical Bulletin](#)

[News Releases](#)

#### **Data available in databases**

[Analytical Platform - Knowledge Databases](#)

[Macroeconomic Data Bank](#)

[Prices indices \(Topics: Prices, Trade\)](#)

#### **Terms used in official statistics**

[Price index of construction and assembly production](#)