

# Price indices of construction and assembly production in February 2019

20.03.2019



The growth of producer prices in construction in comparison to the previous month

According to preliminary data in February 2019 the prices of construction and assembly production were higher by 0.1% in comparison to previous month and by 3.6% in comparison to February 2018.

In comparison to the previous month the growth of prices was recorded in construction of buildings by 0.2% as well as in civil engineering by 0.1%. The prices in specialised construction activities remained unchanged in comparison to the previous month.

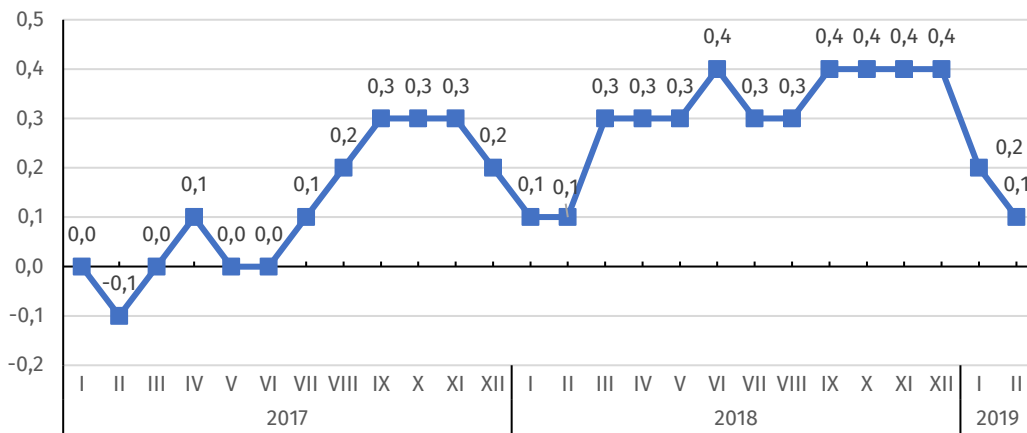
In comparison to February 2018 the increase of prices was noticed in construction of buildings (by 4.3%), in civil engineering (by 3.6%) as well as in specialised construction activities (by 2.9%).

**Table 1. Price indices of construction and assembly production in February 2019**

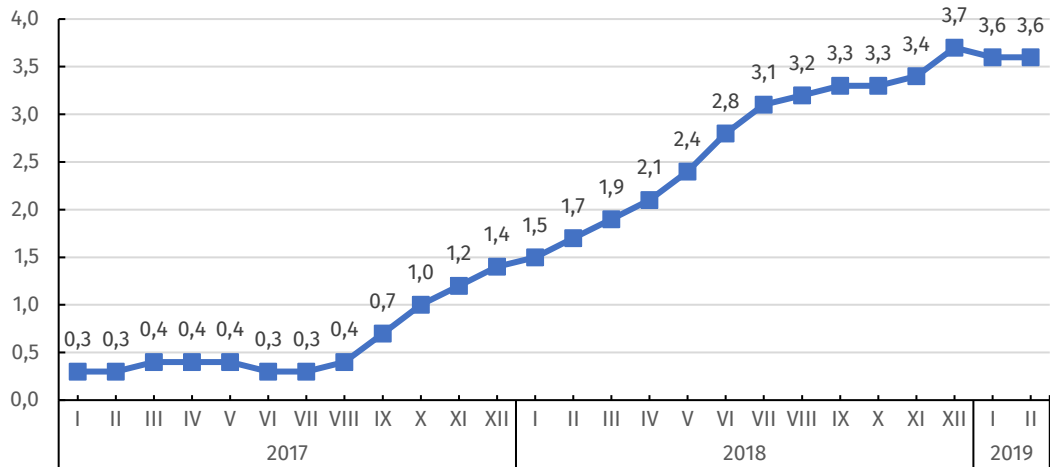
SPECIFICATION	I 2019=100		II 2019=100		I-II 2019	
	XII 2018=100	corresponding period 2018=100	I 2019=100	XII 2018=100	I-II 2018	
<b>PRICE INDICES OF CONSTRUCTION AND ASSEMBLY PRODUCTION</b>						
<b>TOTAL</b>	<b>100,2</b>	<b>103,6*</b>	<b>103,6</b>	<b>100,1</b>	<b>100,3</b>	<b>103,6</b>
Construction of buildings	100,2	104,3	104,3	100,2	100,4	104,3
Civil engineering	100,1*	103,7*	103,6	100,1	100,2	103,6
Specialised construction activities	100,1*	102,9	102,9	100,0	100,1	102,9

\* Data revised.

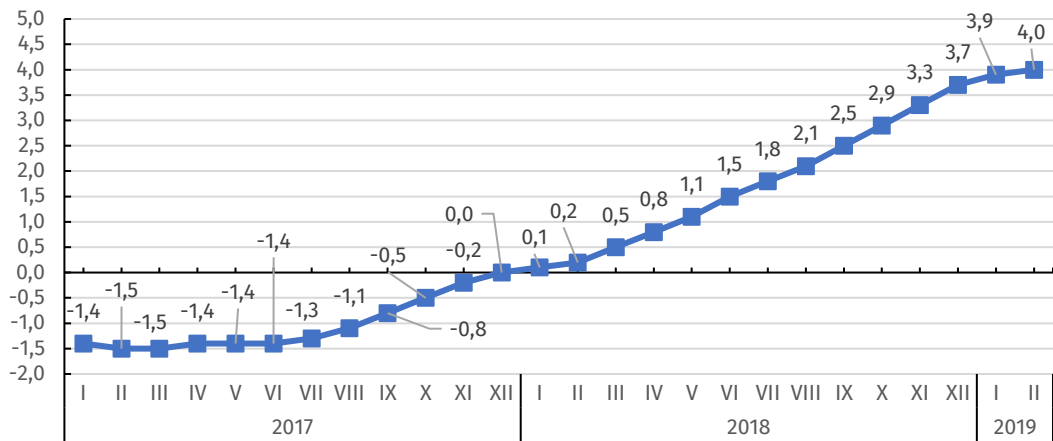
**Chart 1. Prices of construction and assembly production in 2017-2019 (change in % to the previous period)**



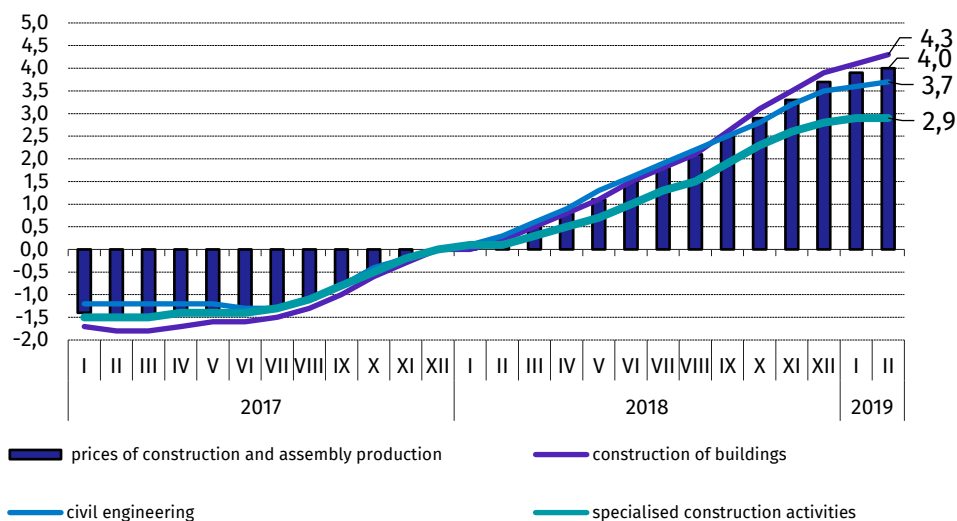
**Chart 2. Prices of construction and assembly production in 2017-2019 (change in % to the same period of the previous year)**



**Chart 3. Prices of production and assembly construction in 2017-2019 (changes in % to XII 2017)**



**Chart 4. Prices of production and assembly construction by divisions NACE in 2017-2019 (changes in % to XII 2017)**



Prepared by:

**The Trade and Services Department**

**Bożena Kudelska**

Tel: 22 608 36 07

e-mail: [B.Kudelska@stat.gov.pl](mailto:B.Kudelska@stat.gov.pl)

Issued by:

**The Spokesperson for the President  
of the Statistic Poland**

**Karolina Dawidziuk**

Tel: 22 608 3475, 22 608 3009

e-mail: [rzecznik@stat.gov.pl](mailto:rzecznik@stat.gov.pl)

#### Press Office

tel.: 22 608 34 91, 22 608 38 04

e-mail: [obslugaprasowa@stat.gov.pl](mailto:obslugaprasowa@stat.gov.pl)



[www.stat.gov.pl/en/](http://www.stat.gov.pl/en/)



[@StatPoland](https://twitter.com/StatPoland)



[@GlownyUrzadStatystyczny](https://www.facebook.com/GlownyUrzadStatystyczny)

#### Related information

[Statistical Bulletin](#)

[News Releases](#)

#### Data available in databases

[Analytical Platform - Knowledge Databases](#)

[Macroeconomic Data Bank](#)

[Prices indices \(Topics: Prices, Trade\)](#)

#### Terms used in official statistics

[Price index of construction and assembly production](#)