

WHO IS RESPONSIBLE FOR THIS?

THE ORGANISATION AND STRUCTURE OF THE CENSUS APPARATUS IN 2011 CENSUS.

The work related to the preparation, organisation, and implementation of the Census of Population and Housing in 2011 is supervised by:

- 1) The President of the Central Statistical Office (the entire work) – as the General Census Commissioner
- 2) The voivode - within a voivodship, as the voivodship census commissioner; the deputy voivodship census commissioner is the head of the statistical office,
- 3) The voivode, mayor, city president - within a gmina, as the gmina census commissioner; the deputy gmina census commissioner is the person appointed by the gmina census commissioner

The Head of the Central Census Office (CBS) acting as the Deputy Census Commissioner (see chapter: THE STRUCTURE OF THE CENTRAL CENSUS OFFICE FOR THE 2011 CENSUS) established for the period required for the collection of census data – within the Central Census Office - the Census Management Centre (CZS) the structures of which include Central Controllers responsible for the coordination and monitoring of the 2011 census. They in turn are supervised by the head of the Census Management Centre.

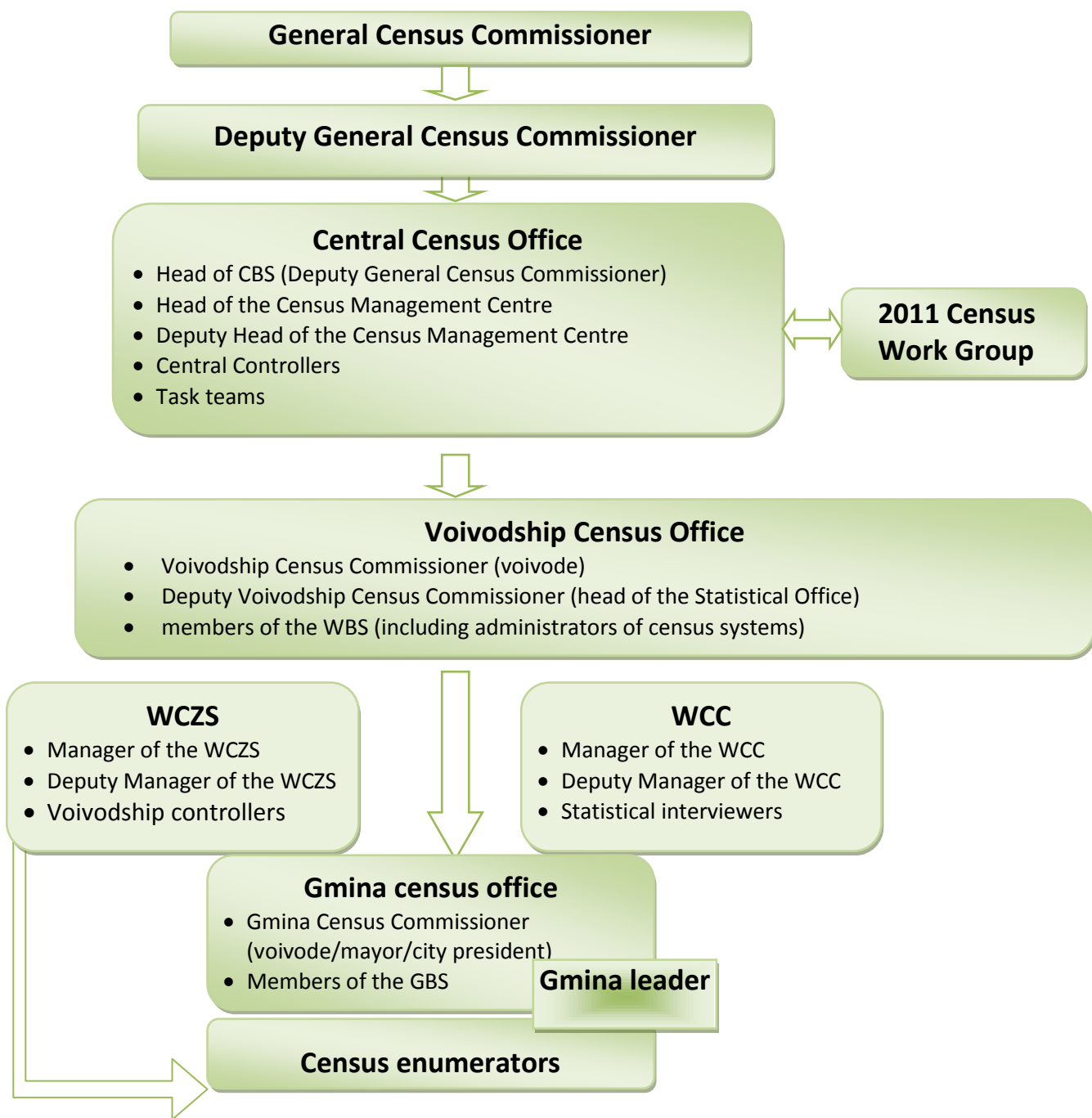
In the CIS, a Census Data Processing Centre (CPDS) was set up and commissioned with the task of ensuring the safety and maintenance of IT systems which process census data and prepare census results. The CPDS is subordinate to the Central Census Office.

Voivodship and gmina census commissioners established census offices to carry out work connected with the census. These offices are formed by the personnel of public statistics services and local self-government units, delegated by census commissioners. The work of the voivodship census office is directed by the deputy voivodship census commissioner, while the gmina census commissioner is responsible for the gmina census office.

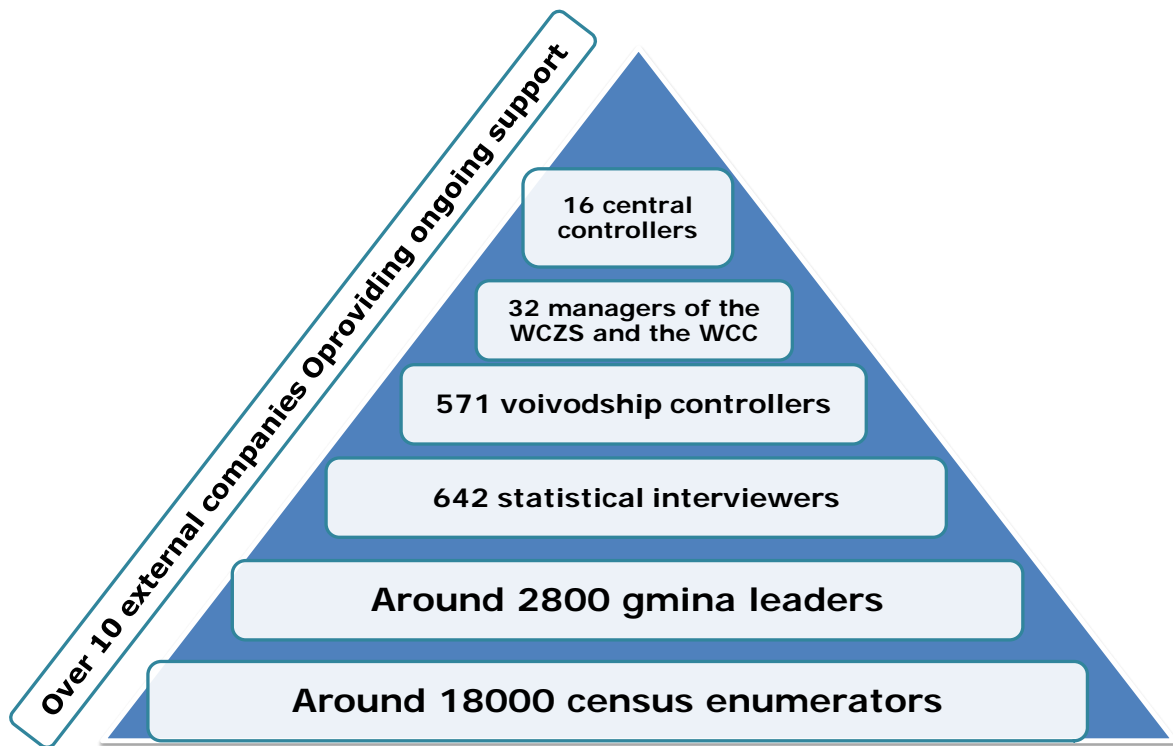
For the period of the Census of Population and Housing 2011, all voivodship census offices appointed administrators of census systems and their deputies who administer the systems and support the work of systems' users. Designated administrators have been trained by the Providers of particular systems in the administration of the ASPIS system and the personalisation of mobile terminals.

For the period required for the collection of census data, the Directors of Statistical Offices, within the voivodship census office, established a voivodship census management centre (WCZS) and a voivodship call centre (WCC). The managers of these entities are persons appointed by the head of the statistical office. The WCZS consists of voivodship controllers, while the WCC is made up of statistical interviewers. Data recording is carried out by census enumerators and statistical interviewers appointed by the head of the statistical office.

Fig. The structure of the census apparatus and the roles of its members engaged in census activities under CBS, WBS, and GBS.



The organisational structure of the census apparatus in numbers



10

THE STRUCTURE OF THE CENTRAL CENSUS OFFICE FOR THE 2011 CENSUS

By the regulation of the President of the Central Statistical Office of 29 November 2011, a Central Census Office was established for the National Census of Population and Housing (CBS). The headquarters of the CBS is the Warsaw CSO. The CBS comprises teams responsible for:

Organisation and logistical services for censuses,

The integration of administrative sources

The preparation of legal regulations and legal services for censuses,

Financing and financial services for services, and conducting tender procedures,

IT services for censuses,

Promotional, popularisation and typographical services for censuses

Personnel services for censuses

The quality of censuses

The modernisation of the TERYT

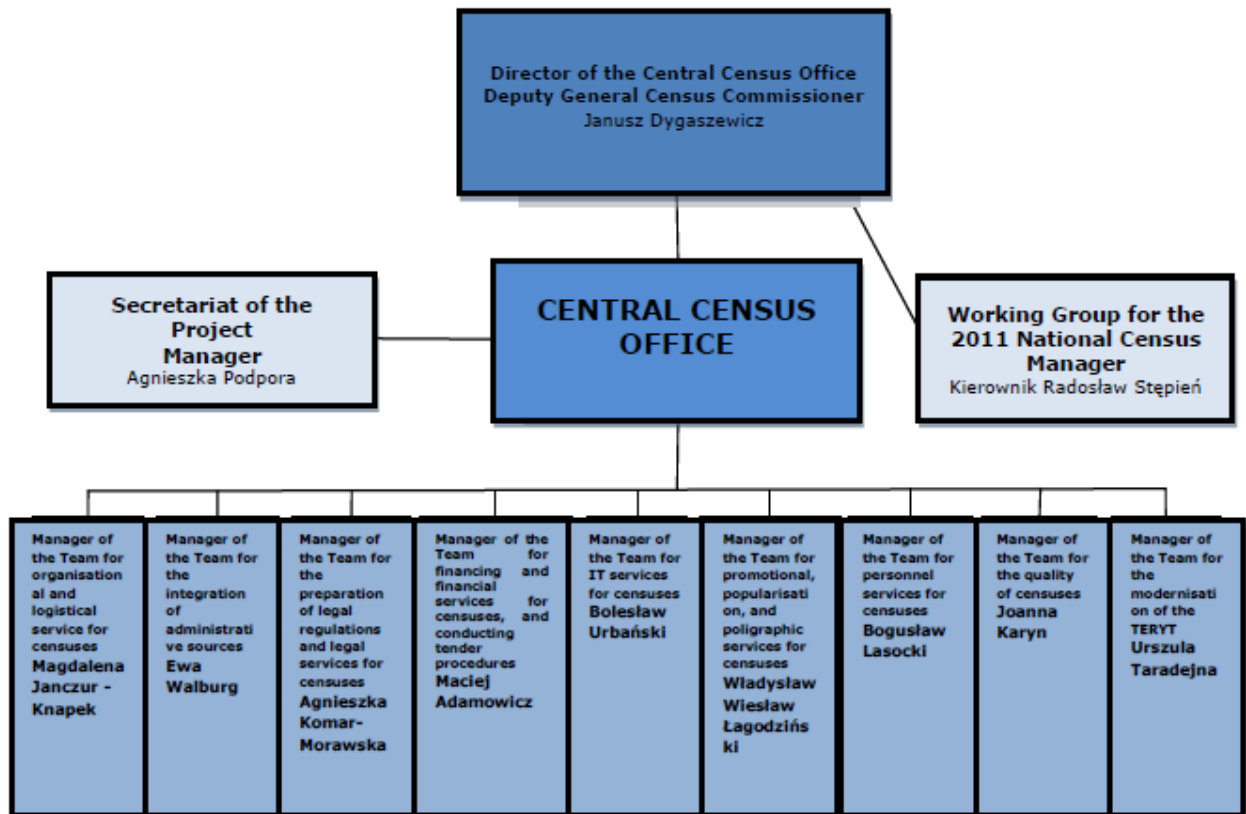
The teams' work is organised and coordinated by Managers who also appoint and verify their makeup.

The body responsible for the content-matter support of the Central Census Office is the Methodology and Analyses Team, which includes the working group for the 2011 National Census.

Census documentation, in accordance with PRINCE 2 methodology, is run by the Secretariat of the Project, founded under the Central Census Office. The Secretariat carries out other tasks designated by the Director of this Office.

The chart below depicts the Structure of the Central Census Office.

Organisation chart of the Central Census Office



CONTRACTS IMPLEMENTED UNDER THE AGRICULTURAL CENSUS 2010 / NATIONAL CENSUS 2011 PROJECTS

- a contract for the preparation, production and implementation of an Operational Microdata Basis
- a contract for the expansion and maintenance of an IT system supporting the implementation of national censuses with the help of electronic forms and mobile terminals, and the supervision of census enumerators, along with the functionality of the Census Completeness Management required to carry out the Agricultural Census in 2010 and the National Census in 2011
- a contract for the provision, configuration, and services for network devices for the needs of the Agricultural Census 2010 and the National Census 2011
- a contract for the provision, configuration, and services for mobile terminals, along with the data transfer service required to carry out the Agricultural Census in 2010 and the National Census in 2011,
- a contract for the creation and implementation of a Call Centre System in the branches of the Central Statistical Office required to carry out the Agricultural Census in 2010 and the National Census in 2011,
- a contract for the provision and expansion of the currently-owned hardware-system-tool infrastructure, along with the installation and configuration required to carry out the Agricultural Census in 2010 and the National Census in 2011,

- a contract for the performance of work related to the preparation of an mLearning platform required to carry out the Agricultural Census in 2010 and the National Census in 2011.
- a contract for the expansion of the infrastructure of the CSO with the AGMIS system to provide additional functionality and broaden the scope of usage of the ASPIS system for the needs of gmina leaders in gmina census offices,
- a contract for the preparation, production, and implementation of an Analytical Microdata Basis required to carry out the Agricultural Census in 2010 and the National Census in 2011.