

Index numbers of industrial and construction-assembly production in April 2014^{a)}

Index numbers of industrial and construction-assembly production in real time (constant prices) were:

Specification	IV		I-IV ^{b)}	IV
	previous month = 100	corresponding period of previous year = 100		monthly average of 2010 = 100
INDUSTRIAL UNITS				
Total	97.7	105.4	104.7	114.2
mining and quarrying	102.1	94.5	94.1	93.2
manufacturing	98.4	107.3	106.9	117.8
electricity, gas, steam and air conditioning supply	88.5	94.4	92.7	95.7
water supply; sewerage waste management and remediation activities	100.6	101.1	102.1	109.2
CONSTRUCTION UNITS				
Total	103.2	112.2	110.5	81.6

^{a)} Reported data; comprise enterprises employing over 9 persons.

^{b)} Data including final information on production and prices in March and reported data – in April.

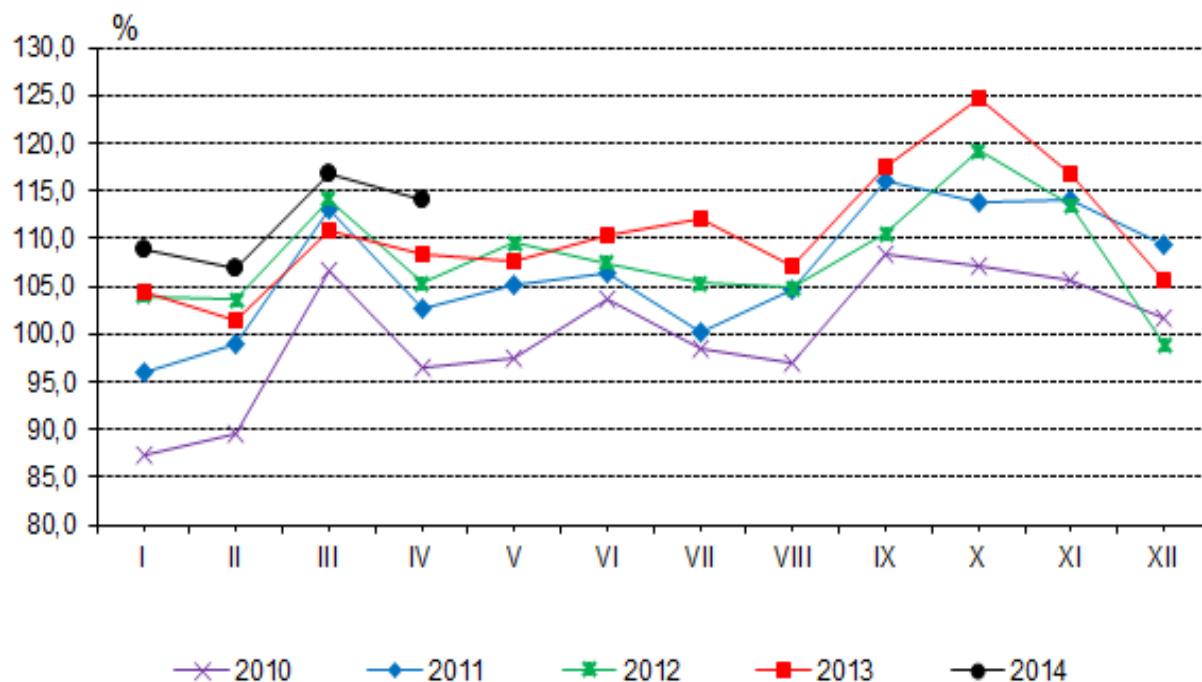
According to the preliminary data, **sold production of industry** in constant prices (in enterprises employing more than 9 persons), in April of 2014, was by 5.4% higher than in the previous year and by 2.3% lower than in March of 2014. After eliminating the seasonal factors, sold production of industry reached the level higher by 5.3% than in the corresponding month of the previous year and higher by 0.9% than in March of 2014.

As compared to April of 2013, an increase in sold production was reported in 27 (out of 34) industry divisions, among others, in manufacture of coke and refined petroleum products – by 21.8%, manufacture of other non-metallic mineral products – by 15.3%, manufacture of furniture – by 14.9%, manufacture of other transport equipment – by 10.8%, manufacture of metal products – by 9.8%, manufacture of food products – by 8.6% and manufacture of basic metals – by 8.2%. A drop in sold production of industry, as compared to April of 2013, was recorded in 7 divisions, among others, in mining of coal and lignite – by 20.5%, manufacture of pharmaceutical products – by 6.8%, electricity, gas, steam and air conditioning supply – by 5.6%, manufacture of computer, electronic and optical products – by 4.7%.

In the period January-April of 2014, sold production of industry was by 4.7% higher than in the corresponding period of the previous year which saw a 0.9% decrease.

Indices of sold production of industry in comparison with an average monthly level in 2010 are presented in the graph below:

SOLD PRODUCTION OF INDUSTRY (monthly average of 2010=100)



According to preliminary data, **construction and assembly production** (in constant prices), including investment and repair work, carried out domestically by construction enterprises employing more than 9 persons, was in April of 2014 by 12.2% higher than a year before (against a decrease by 23.1% of April 2013) and by 3.2% higher than in March of 2014. After eliminating the seasonal factors, construction and assembly production reached the level by 13.3% higher than in April of the previous year and lower by 5.4% in comparison to March of 2014.

An increase in production was recorded in all divisions of construction, both in comparison to April of 2013 and March of 2014. In comparison to April of 2013 the numbers has increased: in entities dealing mainly with specialised construction activities – 16.8%, in entities specializing in civil engineering – 14.5% and in entities whose basic type of activity is the construction of buildings – 7.5%. In comparison to March of this year in entities whose basic type of activity is civil engineering the production has increased – by 9.3%, in entities carrying out mainly work connected with the construction of buildings - by 0.5% and in enterprises performing specialised construction activities – by 0.3%.

In the period January-April of 2014, construction and assembly production was by 10.5% higher than in the corresponding period of the previous year, when a decline was observed by 17.9%.

